



STATE OF THE COAST

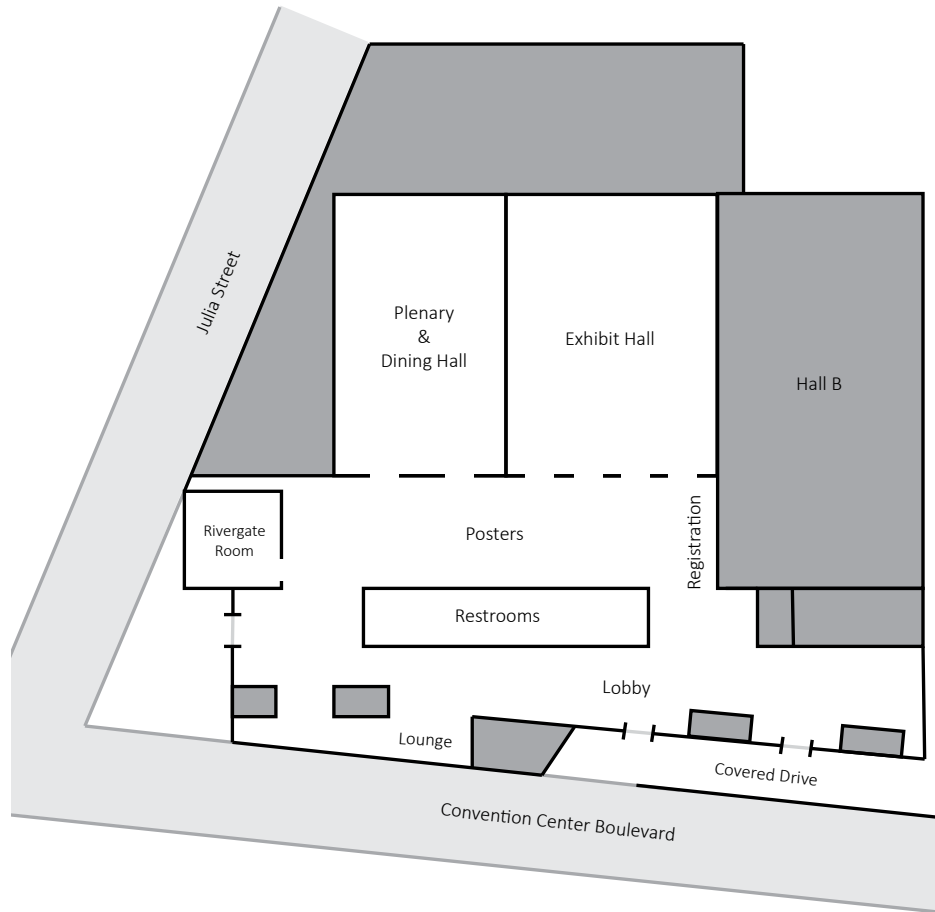
June 1-3, 2016

New Orleans, LA

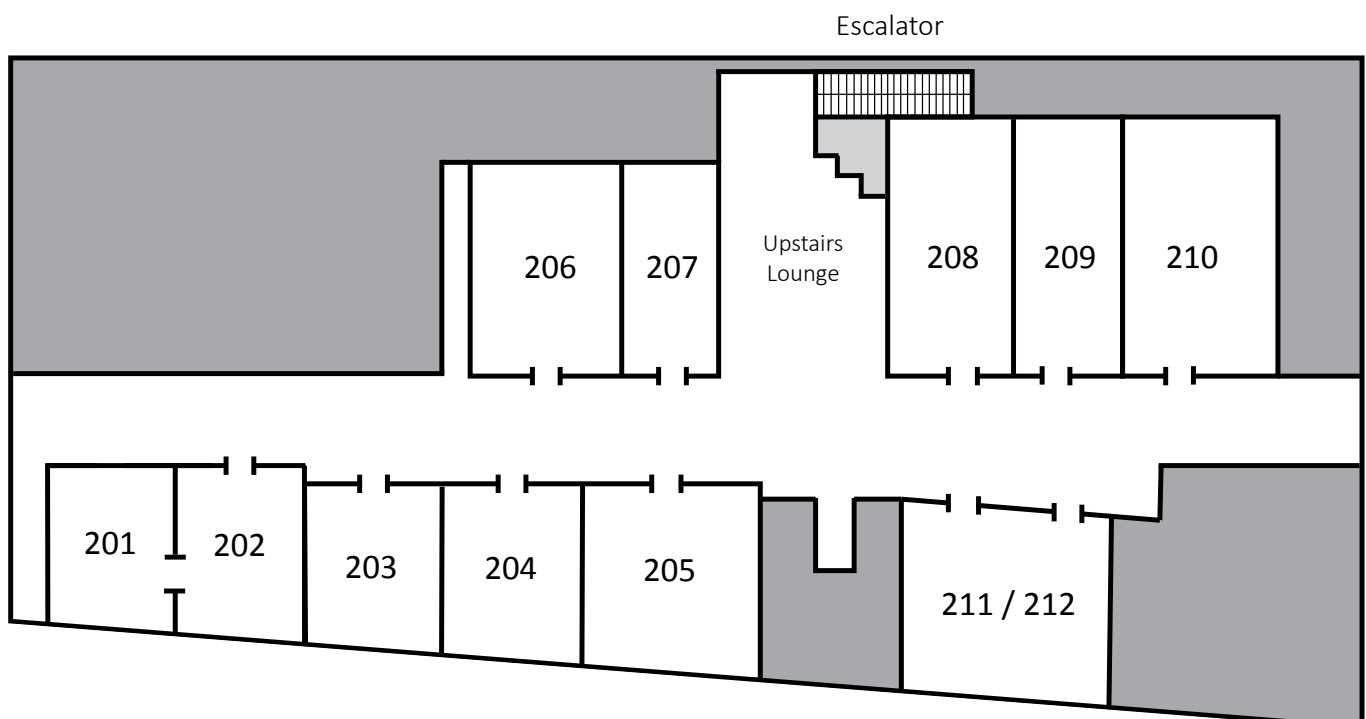


stateofthecoast.org

GRAND HALL



MEETING ROOMS



State of the Coast Conference

June 1-3, 2016
Morial Convention Center
New Orleans, LA

Hosted By



In Partnership With



OUTREACH



RESTORATION



ADVOCACY



WWW.CRCL.ORG

CONTENT

Speaker Bios.....	6
Conference Overview.....	12
Conference Schedule	
Wednesday, June 1.....	14
Thursday, June 2.....	20
Friday, June 3.....	30
Poster Presentations.....	36
Exhibit Hall Map.....	41
Exhibitor Contact Information.....	42
SOC16 Committees.....	51

About Our Cover

Edge of the Marshes, by artist Michel Varisco, was shot in St. Bernard Parish and points to the complex relationship between the natural and engineered environment carved out of a delicate delta system.

Varisco comments: "I am from an endangered place: Southeast Louisiana, some even call it a 'sacrifice zone'. I enter my artwork through the anxiety of how humans and nature live in delicate balance (or imbalance), and how tenuous our co-existence is here". Varisco's artwork has been presented around the United States, Europe, China, Japan, New Zealand, Russia and Africa and is in public collections around the world.



SOC16 would like to thank Arc of Greater New Orleans for donating their services preparing 1,100 conference tote bags and lanyards. Arc is a 501(c) (3) non-profit organization serving people with intellectual disabilities and delays from birth through adulthood in Orleans, Jefferson and St. Bernard parishes. If you are interested in creating volunteer opportunities for special needs adults please visit their website at <http://www.arcgno.org/>

SPEAKER BIOS

Welcome Address and Opening Keynote

Wednesday 9:00 - 10:00, Great Hall Dining Area



Johnny Bradberry, Welcome Address

Executive Assistant to the Governor for Coastal Affairs Chair, Coastal Protection and Restoration Authority

Johnny Bradberry was appointed to serve as Governor John Bel Edwards' Executive Assistant for Coastal Activities and as the Chairman of the Coastal Protection and Restoration Authority in January of 2016. He has extensive experience at the state level and in the private sector (both domestic and international). In 2005, while serving as the Secretary for the Department of Transportation and Development, he played a critical role in preparation, response, and recovery efforts for Hurricanes Katrina and Rita. In this role, Bradberry also provided significant individual leadership on several critical issues, including development of the state's coastal master plan and corresponding implementation plans for coastal protection and restoration. A native of Grand Isle, Louisiana, Bradberry previously served as a Member of the Board of Directors and as Vice President, Business Development for Volkert, Inc. Prior to that, Bradberry served as President of TOPCOR Services and CEO for TOPCOR Companies, LLC. In 2004, he retired from ConocoPhillips Company in Houston, Texas after 28 years. He holds a bachelor's degree in Mechanical Engineering from LeTourneau College and a master's degree in Industrial Engineering from LSU.



Governor John Bel Edwards, Opening Keynote

Governor of Louisiana

The Governor began his public service in 2008 when he was elected to the Louisiana House of Representatives from District 72. He served the people of District 72 for eight years until the voters of Louisiana elected him governor in November 2015. The Governor grew up in Amite, Louisiana as one of eight children. With four Tangipahoa Parish Sheriffs in his lineage, he learned the importance of public service at an early age. Governor Edwards graduated in 1988 from the United States Military Academy at West Point. The governor served eight years as an Airborne Ranger on active duty with the United States Army and commanded a rifle company in the 82nd Airborne Division at Fort Bragg, North Carolina. He went on to graduate Order of the Coif from Louisiana State University Law Center and set up a civil law practice in his home town of Amite.

Plenary Lunch Wednesday

12:00-1:30, Great Dining Hall



Kimberly Davis Reyher

Executive Director

The Coalition to Restore Coastal Louisiana

Kim joined CRCL as Executive Director in 2014 after 13 years with the World Wildlife Fund where she served as Fisheries Program Director. In that capacity, she worked with fisheries around the world and influential companies in the seafood industry to advance sustainability. Kim co-led the development of a \$29 million tuna management project with the United Nations Food and Agriculture Organization, directed the International Smart Gear Competition which awards cash prizes for fishing gear innovations and supervised projects in 20+ countries. Prior to that, she worked with the Ocean Conservancy in Florida and Washington, D.C. Kim received a bachelor's degree in Geography from Dartmouth College and a master's degree in Natural Resource Economics and Policy from Duke University. A Gulf Coast native with deep roots in Tampa, Kim moved to New Orleans in 2011.



Coastal Protection and Restoration Authority

The CPRA is developing a number of online resources to share important information with the public. The Coastal Information Management System (CIMS) is the central access point for additional details on the CPRA's protection and restoration projects and ongoing initiatives. Visit <http://cims.coastal.la.gov> for more information!



Interactive Project Map

The Interactive Project Map contains information on all projects that have received funding since the establishment of the Coastal Master Plan (2007). Project information provided includes an overview of the project, photos, associated project documents and data, and status and funding information.



Floor Risk and Resilience Viewer

This resource displays information on coastal land change, flood risk and impacts to communities. This innovative online-tool provides residents with access to the state's best information about how Louisiana's coast may change in the future, as well as resources to make communities and properties safer.



Spatial Viewer

This viewer contains spatial GIS data on CPRA project locations, monitoring stations and earth overlay maps, which allows for a wide range of spatial queries using custom tools. Users can spatially search for information on project status, monitoring data, documents, as well as a host of other program information.



SPEAKER BIOS

Plenary Lunch Thursday

12:00-1:30, Great Dining Hall



Michael Ellis
Executive Director
The Coastal Protection and Restoration Authority

Michael Ellis comes to the CPRA from HDR Engineering where he served as Louisiana Manager and was primarily focused on coastal sustainability projects and municipal water and wastewater projects. He previously served as the program manager for the Baton Rouge sanitary sewer consent decree program. His responsibilities included management of 85 program team members and multiple sub-consultants and overseeing 100 design and construction projects valued at approximately \$1.5 billion. Ellis is licensed to practice engineering in the State of Louisiana. His 19 years of experience in engineering and environmental consulting includes managing large scale civil engineering and construction projects, Louisiana coastal restoration, and U.S. Army Corps of Engineers remediation projects. He has a Bachelor of Science in Civil Engineering and a Bachelor of Science in International Trade and Finance from Louisiana State University.

Plenary Lunch Friday

12:30-2:00, Great Dining Hall



Chip Groat
The Water Institute of the Gulf

Chip Groat is President and CEO of The Water Institute of the Gulf in Baton Rouge, Louisiana. He assumed this position February 1, 2012. Prior to this he served as Director of the Center for International Energy and Environmental Policy, Associate Director of the Energy Institute, and Director and Graduate Advisor of the Energy and Earth Resources Graduate Program at The University of Texas at Austin. He held the John A. and Katherine G. Jackson Chair in Energy and Mineral Resources in the Department of Geological Sciences, Jackson School of Geosciences, and was Professor, LBJ School of Public Affairs. He assumed these positions in June 2005 after serving 6½ years as Director of the U.S. Geological Survey, having been appointed by President Clinton and retained by President Bush. He has 15 years of prior experience in Louisiana as State Geologist and Director of the Louisiana Geological Survey and Director of the Center for Coastal, Energy and Environmental Resources at Louisiana State University. He holds degrees in geology from the University of Rochester (A.B.), University of Massachusetts (M.S.), and The University of Texas at Austin (Ph.D.).



Mayor Mitch Landrieu
City of New Orleans

Mitch Landrieu was sworn in as the 61st Mayor of New Orleans on May 3, 2010, with a clear mandate to turn the city around following the devastation of Hurricane Katrina and the BP Oil Spill. On February 1, 2014, Mayor Landrieu was overwhelmingly re-elected to a second term and is continuing to deliver major victories. Prior to serving as Mayor, Landrieu served as Lieutenant Governor of Louisiana for six years and as a State legislator for 16 years where he earned a reputation as a reformer. Landrieu was educated at Jesuit High School of New Orleans, Catholic University in Washington D.C., and earned a law degree from Loyola University. Throughout his years of public service, Mitch has governed by the philosophy that New Orleans is “one team, one fight, one voice, and one city.”



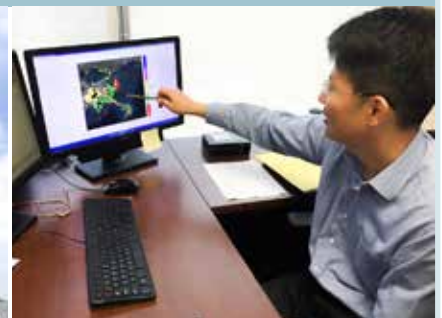
THE WATER INSTITUTE OF THE GULF®

Because life happens at the water's edge

THE WATER INSTITUTE IS A NOT-FOR-PROFIT, INDEPENDENT RESEARCH AND TECHNICAL SERVICES RESOURCE WITH A MISSION TO SUPPORT RESILIENT COASTS AND SUSTAINABLE WATER SYSTEMS WORLDWIDE. OUR WORK HELPS ENSURE LIVABLE COMMUNITIES AND A THRIVING ECONOMY AND ENVIRONMENT.

Let's Work Together

Today, The Water Institute is at work conducting applied research to support coastal restoration and protection efforts that will help coastal communities and economies become more resilient to land subsidence, storms, rising sea levels, and other coastal threats. Key initiatives include development of numerical modeling and decision support tools, real-time forecasting, and comprehensive integrated risk assessment modeling to establish scientific benchmarks and provide guidance that will better inform policy makers, communities, and businesses. By leveraging the knowledge and tools of The Water Institute, government, business, and industry interests can thoughtfully plan for sustainable infrastructure, landscapes, ecosystems, and emergency preparedness.



APPLIED RESEARCH

- FIELD INVESTIGATIONS
- REAL-TIME SENSOR DATA COLLECTION AND MONITORING DESIGN
- INTEGRATED NATURAL SYSTEMS MODELING
- ANALYTICS AND INTEGRATED DECISION SUPPORT
- SPATIAL ANALYSIS OF SOCIOECONOMIC AND ECOSYSTEM CHANGE

DECISION SUPPORT

- INDEPENDENT TECHNICAL EXPERT REVIEW
- EXPERT OPINION AND ADVICE



THEWATERINSTITUTE.ORG • 301 NORTH MAIN STREET, SUITE 2000, BATON ROUGE, LA 70825 • 225.448.2813

SPEAKER BIOS CONT.

Plenary Lunch Friday CONT.



Dr. Denise Reed
The Water Institute of the Gulf

Denise Reed, Ph.D., joined The Water Institute of the Gulf as its Chief Scientist in 2012. She is a nationally and internationally recognized expert in coastal marsh sustainability and the role of human activities in modifying coastal systems. She has worked on coastal issues in the US and in other parts of the world for over 30 years. Dr. Reed has been extensively involved in restoration planning in coastal Louisiana since the early 1990's with a focus on bringing scientific knowledge to bear in developing sustainable solutions. Reed has also been engaged in ecosystem restoration research and planning both in the California Bay-Delta and coastal Louisiana. She has served on numerous boards and panels concerning the effects of human alterations on coastal environments and the role of science in guiding ecosystem restoration, including a number of National Research Council Committees. She received her Bachelor of Arts and PhD from the University of Cambridge in England.

NOTES

[illegible]

HNTB

is an infrastructure solutions firm, providing engineering, planning, architecture and construction management services.

2015 Design Firm
of the Year

ENR Texas & Louisiana



RESTORING THE COAST

#1 Job Creator in Southeast Louisiana



RESTORE
THE MISSISSIPPI RIVER DELTA



Investing in coastal restoration
protects our communities, jobs
and way of life.

Learn More at MississippiRiverDelta.Org

CONFERENCE OVERVIEW

Day I - Wednesday										
	201	205	206	207	208	209	210	211-212	213	Rivergate Room
I	New Orleans Here and Now: Ten Years, Six Stories, One City	Oil Spill Effects	Mid-Basin Sediment Diversions: A Look Forward	Implementation of the Caminada Headland Beach Restoration Project, from Planning through construction	Submerged Aquatic Vegetation	Modeling Basin Response to Diversions	Estuary Dynamics	High Water Event Discussion Panel	Together at Last: Marrying Louisiana Water Law to Science (CLE)	
LUNCH - CRCL State of the Coast										
	201	205	206	207	208	209	210	211-212	213	Rivergate Room
II	Paratus 14:50	Monitoring Approaches I	Flooding Impacts of Diversions to Vegetation	Barrier Island and Inlet Dynamics	Characterization and Surveying of Marsh Soils	Physical Modeling and River Studies	Technical Analyses in the Feasibility Study of the Calcasieu River Salinity Controls Project	Geomorphic Evolution of Diversions Receiving Basins	What Lies Beneath: Partnership, Water Resources, and Geology	The Hiring Process: Do's and Don't's from Resume Writing to Salary Negotiation
III	Delta Justice: The St. Bernard Trappers War	Monitoring Approaches II	LCA Mississippi River Delta Management Study: Modeling Basin-side Impacts of Large-Scale Restoration Projects	Advancements in Barrier Island Restoration and Monitoring	Species Considerations in Restoration of Wetland Vegetation	Developing Construction Costs for Restoration Projects	Restoration Physical Processes	Understanding Sediment Properties in Receiving Basins	Sustainable Water Systems: The Impact of Changing Water Availability, Demands, and Water Quality on Louisiana's Coast	
DAY II - THURSDAY										
	201	205	206	207	208	209	210	211-212	213	Rivergate Room
IV	Vanishing Pearls: The Oystermen of Pointe à la Hache	Crabs, Clams, Oysters, and Climate	Linking Social & Economic Processes in River Diversions I	Discussion Panel: Dialogue on Advancing a Regional Sediment Management Approach to Restoration in Louisiana and other Gulf Perspectives	Marsh Creation Design I: Design Criteria, Data collection, & Analysis	Deltaic Processes	Monitoring Programs I	Nutrients and Diversions	Atchafalaya Perspectives: Exploring the Potential of the Mississippi River's Largest Diversion	Financing the Future: Exploring Potential Financing Mechanisms for Coastal Restoration and Protection
	An Enduring	Vertebrate	Linking Social	Time Scales	Marsh Creation	Floating	Monitoring	Wetland	The Future	Property Rights

V	Legacy: Louisiana's Croatian-Americans	Coastal Ecology & Restoration	& Economic Processes in River Diversions II	of Subsidence and Landscape Evolution	Design II: Using Construction Observations and Monitoring Data to Improve Marsh Creation Design	Medium: Web Based Communication Tools	Programs II	Carbon Storage	of Coastal Restoration	and Coastal Restoration (CLE)
LUNCH - CPRA State of Implementation										
	201	205	206	207	208	209	210	211-212	213	Rivergate Room
VI	Vanishing Pearls: The Oystermen of Pointe à la Hache	Fisheries Modeling	Linking Social & Economic Processes in River Diversions III	Results from Recent Studies of Storm Surge Risk and Mitigation Options	Time Scales of Sediment Delivery for Land Building	Mobility as Adaptation: historical contexts for coastal management in	Mapping and Monitoring Techniques	Deltaic Soil Processes	History of Accelerated Land Loss, Oil & Gas Industry	Mid-Basin Sediment Diversions Program Management
VII	An Enduring Legacy: Louisiana's Croatian-Americans	Avian Coastal Habitat Use, Distribution, and Restoration Scenarios	Changing Course: Navigating the Future of the Lower Mississippi River	Storms and Waves in the Coastal Landscape	Increasing Sediment Retention	Louisiana's Strategic Adaptations for Future Environments (LASAFE)	Mining Data for Effective Management	Soil Processes	Coastal Projects: From Feasibility to Implementation	Louisiana Oyster Policy and Law (CLE)
DAY III - FRIDAY										
	201	205	206	207	208	209	210	211-212	213	Rivergate Room
VIII	Barge	Legal and Financial Approaches	Coastal Master Plan I	Structural Risk Reduction I	Uncontrolled River Diversions	Community Response to Federal Policy	Natural Coastal Infrastructure I	Discussion Panel: Best Practices in Non-structural Flood Protection: Learning from History and Coastal Communities	Storm Surge Forecasting & Resilient Communities	Part I: Restoration on the Half Shell: Presentations in Non-Technical Language
IX	Barge	Developing Partnerships for Resilience	Coastal Master Plan II	Structural Risk Reduction II	Lower Mississippi River Dynamics	Responses to a Risky Landscape	Natural Coastal Infrastructure II	Coastal Infrastructure Risk Reduction Projects	Educational Innovations for Coastal Restoration in Louisiana	Part II: Restoration on the Half Shell: Presentations in Non-Technical Language
LUNCH - Mayor Landrieu, The Water Institute of the Gulf, Student Award Presentations										
X	Barge	Discussion Panel: Water Entrepreneurship in NOLA	Coastal Master Plan III	Alluvial Borrow Pits	Discussion Panel: Operating Sediment Diversions for the Real World: Recommendations from an Expert Working Group	Marsh Creation	Natural Coastal Infrastructure III	Discussion Panel: Oh the Humanities! Culture & Values in Coastal Restoration	Methods of Community Engagement	Coastal Parish Perspectives on Coastal Restoration and Protection (In Development)

CONFERENCE SCHEDULE

7:00-9:00	Registration (Poster Lobby), Continental Breakfast (Exhibit Hall)
9:00-10:00	Opening Plenary: Governor John Bel Edwards (Dining Hall)
10:00-10:30	Morning Break (Exhibit Hall)
10:30-12:00	Session Block I (Upstairs meeting rooms)

Time	201	205	206	207	208
	New Orleans, Here and Now: Ten Years, Six Stories, One City (2015, 1h6m)	Oil Spill Effects	Mid-Basin Sediment Diversions: A Look Forward	Implementation of the Caminada Headland Beach and Dune Restoration Project, from Planning through Construction	Submerged Aquatic Vegetation
	Moderator: Michael Pasquier, LSU	Moderator: Giovanna McClenachan, CRCL	Moderator: Bren Haase, CPRA	Moderator: Greg Grandy, Coastal Engineering Consultants, Inc.	Moderator: Stuart Brown, CPRA
10:30 - 10:35	Moderator Introduction	Moderator Introduction	Moderator Introduction	Moderator Introduction	Moderator Introduction
10:35 - 11:00	<i>A collection of six provocative short films from directors whose work has been recognized by the Sundance Film Festival and other major venues, New Orleans, Here and Now offers an inspiring reflection on the city's resurgence through gripping personal stories spanning multiple generations.</i>	<i>Spartina alterniflora Growth Responses to Weathered Macondo Well Oil Applied to Soil and Aboveground Tissue: A Mesocosm Assessment</i> Jonathan Willis, ULL	<i>Adaptive Management Strategy for the Management of Mid Basin Sediment Diversions</i> Richard Raynie, CPRA	<i>Planning of the Caminada Headland Beach and Dune Restoration Project</i> Honora Buras, CPRA	<i>Drawing the Map of Submerged Aquatic Vegetation in the Northern Gulf of Mexico: Distribution and Patterns of Abundance Across Salinity Zones</i> Kristen DeMarco, LSU AgCenter Student
11:00 - 11:25		<i>PAHs and Gulf Menhaden: The Legacy of the DWH Spill in the Northern Gulf of Mexico</i> Gregory Olson, LSU	<i>Past Challenges and Current Considerations for Developing Operations Plans of Two Mississippi River Sediment Diversions</i> Kent Bolfrass, CPRA	<i>Engineering and Design of the Caminada Headland Beach and Dune Restoration Project</i> Brad Miller, CPRA	<i>Environmental Drivers of Seasonal Variability in Coastal Marsh Pond SAV Communities Along a Salinity Gradient in Barataria Basin, Louisiana, USA</i> Eva Hillmann, LSU Student
11:25 - 11:50		<i>Understanding the Fate and Effects of the Oil Spilled During the Deepwater Horizon Disaster</i> Edward Overton, LSU	<i>Coastal Eco-morphological Real-time Forecasting (CERF) System</i> Ehab Meselhe, The Water Institute of the Gulf	<i>Construction of the Caminada Headland Beach and Dune Restoration Project</i> Jacques Boudreaux, CPRA	<i>The Nutrient Status of Abundant Submerged Aquatic Vegetation Species Along a Salinity Gradient in Louisiana</i> Kelly Darnell, The Water Institute of the Gulf
11:50 - 12:00		Moderator Facilitated Open Discussion	Moderator Facilitated Open Discussion	Moderator Facilitated Open Discussion	Moderator Facilitated Open Discussion



Visit m.stateofthecoast.org
for more conference
information.

Time	209	210	211-212	213	RIVERGATE ROOM (First Floor)
	Modeling Basin Response to Diversions	Estuary Dynamics	High Water Event Implications Discussion Panel	Together at Last: Marrying Louisiana Water Law to Science (CLE)	
	Moderator: Shaye Sable, Dynamic Solutions, LLC	Moderator: Alisha Renfro, NWF	Moderator: Natalie Peyronnin, EDF	Moderator: Mark Davis, Tulane University	
10:30 - 10:35	Moderator Introduction	Moderator Introduction	Moderator Introduction	Moderator Introduction	
10:35 - 11:00	<i>Evolution of a Diversion-fed Crevasse Splay in the Lower Mississippi Delta: Implications for Coastal Restoration</i> Molly Keogh, Tulane University Student	<i>Observations of Lower Mississippi River Estuarine Dynamics</i> Michael Ramirez, Tulane University Student	<i>The High Water Discussion Panel will explore the implications of the most recent high water event for flood protection, navigation and restoration, why the river is managed the way it is today, and lessons learned from case studies.</i> Panelists: Jean Vossen, USACE Alex Kolker, LUMCON Dallon Weathers, The Water Institute of the Gulf	<i>The Louisiana Water Resources Sustainability Assessment Framework</i> Scott Hemmerling, The Water Institute of the Gulf	
11:00 - 11:25	<i>Delft3D Modeling of Water Quality in Breton Sound Estuary, LA</i> Kelvin Hu, LSU	<i>Mechanics of Salt Wedge Propagation in the Lower Mississippi River as a Function of Residual Fluvial Discharge: Theory, Observations and Modeling</i> Ioannis Georgiou, UNO		<i>Application of Freshwater Modeling and Model-based Decision Tools to Louisiana's Water Budget and Implications for Policy</i> Bryan Piazza, The Nature Conservancy	
11:25 - 11:50	<i>Model Development for Deltaic and Ecosystem Restoration: Nutrients, Pelagic Primary Production, and Sedimentary Processes</i> Melissa Baustian, The Water Institute of the Gulf	<i>Change in the Dynamics of Flow and Transport of the Lower Mississippi River and Delta in Response to Upstream Sediment Diversions</i> Ahmed Gaweesh, UNO		<i>Progress Toward an Integrated Water Code</i> Christopher Dalbom, Tulane Institute on Water Resources Law & Policy	
11:50 - 12:00	Moderator Facilitated Open Discussion	Moderator Facilitated Open Discussion		Moderator Facilitated Open Discussion	

CONFERENCE SCHEDULE CONT.

12:00-1:30 Lunch Plenary: CRCL, State of the Coast (Dining Hall)

1:30-3:00 Session Block II (Upstairs meeting rooms)

Time	201	205	206	207	208
	Paratus 14:50 (2015, 1h30m)	Monitoring Approaches	Flooding Impacts of Diversions on Wetland Vegetation	Barrier Island and Inlet Dynamics	Characterization and Surveying of Marsh Soils
		Moderator: Jessica Henkel, RESTORE Council	Moderator: Carey Perry, Gulf South Research Corporation	Moderator: Nina Reins, MWH Global	Moderator: Brad Inman, USACE
1:30 - 1:35	<i>Paratus 14:50 is a feature-length documentary on the United States Coast Guard's response to Hurricane Katrina in 2005. The story focuses on Coast Guard air rescues carried out by Coast Guard Air Station New Orleans and Coast Guard Aviation Training Center Mobile across southern Alabama, Louisiana, and Mississippi in the first two weeks of the response. These men and women helped contribute to pulling more than 500 people from the impacted areas, the greatest single rescue in our nation's history.</i>	Moderator Introduction	Moderator Introduction	Moderator Introduction	Moderator Introduction
1:35 - 2:00		<i>Utilizing Unmanned Aerial Vehicles (UAVs) to Monitor Land Loss, Assess Hazard Mitigation, and Evaluate Economic Sustainability of Louisiana Coast</i> Alahna Moore, UNO Student	<i>Understanding Coastal Wetland Plant Responses to Flooding</i> Mark Hester, ULL	<i>Breach Management Program: Criteria, Process, and Results</i> Greg Grandy, Coastal Engineering Consultants, Inc.	<i>Results from the Recent Geophysical Survey Conducted in Barataria Basin as a Part of the System Wide Assessment and Monitoring Program</i> Syed Khalil, CPRA
2:00 - 2:25		<i>Understanding Coastal Changes Using High Resolution Imagery from Unmanned Aircraft Systems</i> Christopher Zarzar, MSU Student	<i>Existing Diversion Impacts on Flooding and Plant Responses</i> Jenneke Visser, ULL	<i>Morphodynamics of a Transgressive Tidal Inlet-flood Tidal Delta System: Raccoon Pass, LA</i> Ioannis Georgiou, UNO	<i>Characterization of Coastal Sediments Used in Marsh Restoration Projects</i> Malay Ghose Hajra, UNO
2:25 - 2:50		<i>New Techniques for Data Visualization and Analysis in Evaluating Marsh Erosion using Unmanned Aerial Vehicles (UAVs) as a Vehicle for High Resolution Aerial Mapping</i> Ryan Fuselier, Fenstermaker	<i>Modeling the Effect of Flooding on Wetland Vegetation</i> Scott Duke-Sylvester, ULL	<i>Modeling Interactions Between Backbarrier Marshes, Tidal Inlets, Ebb-deltas, and Adjacent Barriers Exposed to Rising Sea Levels</i> Kevin Hanegan, UNO Student	<i>Quantifying Thin Mat Floating Marsh Strength and Interaction with Hydrodynamic Conditions</i> Haydel Collins, LSU Student
2:50 - 3:00		Moderator Facilitated Open Discussion	Moderator Facilitated Open Discussion	Moderator Facilitated Open Discussion	Moderator Facilitated Open Discussion

Time	209	210	211-212	213	RIVERGATE ROOM (First Floor)
	Physical Modeling and River Studies	Technical Analyses in the Feasibility Study of the Calcasieu River Salinity Controls Project	Geomorphic Evolution of Diversion Receiving Basins	What Lies Beneath: Partnership, Water Resources, and Geology	The Hiring Process: Do's and Don't's from Resume Writing to Salary Negotiation
	Moderator: Jeff Carney, LSU	Moderator: Austin Feldbaum, CPRA	Moderator: Andrew Woodruff, DEI	Moderator: Jamie Bartel, CDM Smith	Moderator: Nick Speyrer, Emergent Method
1:30 - 1:35	Moderator Introduction	Moderator Introduction	Moderator Introduction	Moderator Introduction	Moderator Introduction
1:35 - 2:00	<i>Implementation of the Expanded Small Scale Physical Model and Center for River Studies</i> Rudy Simoneaux, CPRA	<i>Data Collection and Baseline Assessments for the Calcasieu Salinity Control Measures Project</i> Cyndhia Ramatchandirane, The Water Institute of the Gulf	<i>Describing Delta Dynamics Using Isoleths of Land: Water Ratio Linked to Changes in Ecosystem</i> Robert Twilley, LSU	<i>Alternative Delivery of Water Resources</i> Robert Davis, CDM Smith	<i>This session seeks to provide support for students nearing graduation and facing an impending job search. It will cover the basic do's and don't's of resume writing, interviewing, and salary negotiation, from a variety of perspectives in the private sector, government, and academia. The goal is to help career-seeking students launch their resumes through H.R. to the desks of hiring managers, ace the interview, and successfully negotiate their salary.</i>
2:00 - 2:25	<i>The New and Improved (and Expanded) Small-Scale Physical Model of the Lowermost Mississippi River: Similitude and Modeling</i> Clint Willson, LSU	<i>Comprehensive Modeling Approach to Analyze the Calcasieu Ship Channel Salinity Control Measures Project</i> Ehab Meselhe, The Water Institute of the Gulf	<i>Understanding Hurricane Induced Sedimentation in Wetlands Based on a Coupled Wave-Surge-Sediment Transport Model</i> Jim Chen, LSU	<i>The Depletion of the Chicot Aquifer: Farmer Decision-making Concerning the Use of Ground Water vs. Surface Water</i> JoAnne DeRouen, ULL	
2:25 - 2:50	<i>Shifting Foundations: Exhibit Design for the Center for River Studies</i> Jeff Carney, LSU	<i>Design Considerations in the Development of the Calcasieu Salinity Control Measures Project</i> Joel Tillery, Tetra Tech	<i>Quantifying Storm Surge Attenuation Along Coastal Louisiana via Various Land Mass and Land Cover Scenarios</i> Christopher Siverd, LSU Student	<i>Planning for What You Can't See</i> David Eley, GeoEngineers	
2:50 - 3:00	Moderator Facilitated Open Discussion	Moderator Facilitated Open Discussion	Moderator Facilitated Open Discussion	Moderator Facilitated Open Discussion	This session is one of a series of events aligned to aid students in their professional and network development.

CONFERENCE SCHEDULE CONT.

3:00-3:30 Break with Afternoon Refreshments (Exhibit Hall)

3:30-5:00 Session Block III (Upstairs Meeting Rooms)

Time	201	205	206	207	208
	Delta Justice: The Islenos Trappers War (2015, 48m)	Monitoring Approaches	LCA Mississippi River Delta Management Study: Modeling Basin-side Impacts of Large-Scale Restoration Projects	Advancements in Barrier Island Restoration and Monitoring	Species Considerations in Restoration of Wetland Vegetation
	Moderator: David DuBos, director	Moderator: Jessica Henkel, RESTORE Council	Moderator: Cherie Price, USACE	Moderator: Jonathan Willis, ULL	Moderator: Theryn Henkel, LPBF
3:30 - 3:35	Moderator Introduction	Moderator Introduction	Moderator Introduction	Moderator Introduction	Moderator Introduction
3:35 - 4:00	<i>A documentary about the friction between South Louisiana's Islenos community and St. Bernard powerbroker Leander Perez in the early 20th century. Directed by local filmmaker David DuBos, 'Delta Justice' was named the winner of the Audience Award for Louisiana features at the 2015 New Orleans Film Festival.</i>	<i>Advancements on Coastal Marsh Edge Erosion Modeling Through the Incorporation of Soil Properties</i> Cody Johnson, LSU Student	<i>Mississippi River Hydrodynamic and Delta Management Study (MRHDM): Basin-Wide AdH Model Setup, Validation, and Application</i> Gary Brown, USACE	<i>Evolution of Barrier Island Restoration in Coastal Louisiana</i> Brett Borne, Coastal Engineering Consultants, Inc.	<i>Recommendations for the Implementation of Schoenoplectus californicus in Freshwater Wetland Restoration: Lessons Learned</i> Taylor Sloey, Coastal Environments, Inc.
4:00 - 4:25		<i>The Need for Effective Boom Monitoring Strategies During Oil Spill Response Activities</i> Justin Stein, Abt Associates	<i>Mississippi River Hydrodynamic and Delta Management Study (MRHDM): Basin-Wide Delft3D Model Setup, Validation, and Application</i> Ehab Meselhe, The Water Institute of the Gulf	<i>Subsurface Compaction Due to Sediment Loading from Beach Restoration at the Caminada Headland in South Louisiana</i> Mark Byrnes, Applied Coastal Research and Engineering, Inc.	<i>Interactive Effects of Created Salt Marsh Substrate Type, Elevation and Nutrient Regime on Spartina alterniflora and Avicennia germinans Productivity and Soil Development</i> Laura Hundy, ULL
4:25 - 4:50		<i>Vegetation Trajectories Following Coastal Wetland Restoration: Understanding Key Biotic and Abiotic Drivers of Planting Success and Natural Recruitment</i> Erik Yando, ULL Student	<i>Mississippi River Hydrodynamic and Delta Management Study (MRHDM): Fish and Shellfish Community Modeling Using Ecopath with Ecosim + Ecospace and CASM</i> David Lindquist, CPRA	<i>Assessment of Louisiana Barrier Island Restoration Trajectories through the Development and Implementation of a New Monitoring Protocol</i> Mark Hester, ULL	<i>Environmental Effects on Competitive Outcomes Between Two Monoculture-forming Marsh Plants</i> Alex Ameen, Tulane University Student
4:50 - 5:00		Moderator Facilitated Open Discussion	Moderator Facilitated Open Discussion	Moderator Facilitated Open Discussion	Moderator Facilitated Open Discussion

5:00-7:00 Welcoming Reception (Exhibit Hall)

Time	209	210	211-212	213	RIVERGATE ROOM (First Floor)
	Developing Construction Costs for Restoration Projects	Restoration Physical Processes	Understanding Sediment Properties in Receiving Basins	Sustainable Water Systems: The Impact of Changing Water Availability, Demands, and Water Quality on Louisiana's Coast	
	Moderator: Rudy Simoneaux, CPRA	Moderator: Ning Zhang, McNeese	Moderator: Sam Martin, CPRA	Moderator: Emad Habib, ULL	
3:30 - 3:35	Moderator Introduction	Moderator Introduction	Moderator Introduction	Moderator Introduction	
3:35 - 4:00	<i>Techniques for Developing Restoration Project Construction Costs</i> Whitney Thomson, CB&I	<i>Laboratory Study of a Novel Marsh Shoreline Protection Device: Sand Collection</i> Grant Besse, ULL Student	<i>Evaluation of Settling Velocity of Fine-grained Dredged Sediments Used in Louisiana Coastal Restoration Projects</i> Lars Erickson, UNO Student	<i>A Geospatial Framework to Elucidate the Dynamics of Groundwater and Surface Water Use in Louisiana</i> Whitney Broussard, ULL	
4:00 - 4:25	<i>Modifications and Improvements to the 2017 Master Plan Project Costs and Attributes</i> Travis Byland, CPRA	<i>An Innovative Method for Shoreline Protection</i> David Minton, The Cypress Group, LLC	<i>Implications of Texture and Erodibility for Sediment Retention in Receiving Basins of Coastal Louisiana Diversions: Wet Bay and Caernarvon as Examples</i> Kehui Xu, LSU	<i>Assessment of Water Supply Stresses in Southwest Louisiana Under Effects of Climate Variability</i> Hisham Eldardiry, ULL Student	
4:25 - 4:50	<i>Lessons Learned: An Analysis of Recent Bid Data</i> Glenn Ledet, CPRA	<i>Bottom Boundary Layer Sediment Transport Processes in Fourleague Bay of Louisiana and Their Implication to Sediment Diversion and Coastal Restoration</i> Jiaze Wang, LSU Student	<i>Geological and Geotechnical Characterization of the Middle Barataria Bay and Middle Breton Sound Diversion Receiving Basins</i> Samuel Bentley, LSU	<i>Evolution of the Geochemistry of Groundwater and Surface Water in Southwest Louisiana, Including the Chenier Plain</i> David Borrok, ULL	
4:50 - 5:00	Moderator Facilitated Open Discussion	Moderator Facilitated Open Discussion	Moderator Facilitated Open Discussion	Moderator Facilitated Open Discussion	

CONFERENCE SCHEDULE CONT.

7:00 – 8:30

Registration (Poster Lobby), Continental Breakfast (Exhibit Hall)

8:30-10:00

Session Block IV (Upstairs Meeting Rooms)

Time	201	205	206	207	208
	Vanishing Pearls: The Oystermen of Pointe a la Hache (2014, 1h20m)	Crabs, Clams, Oysters, and Climate	Linking Social and Economic Processes in River Diversions	Discussion Panel: Advancing a Regional Sediment Management Approach to Restoration in Louisiana, with Other Gulf Perspectives	Marsh Creation Design I: Design Criteria, Data Collection, and Analysis
	Moderator: Michael Pasquier, LSU	Moderator: Shaye Sable, Dynamic Solutions, LLC	Moderator: Alex Kolker, LUMCON	Moderator: Derek Brockbank, ASBA	Moderator: Rudy Simoneaux, CPRA
8:30 - 8:35	Moderator Introduction	Moderator Introduction	Moderator Introduction	Moderator Introduction	Moderator Introduction
8:35 - 9:00	<i>For over a century, the people of Pointe a la Hache, Louisiana have survived by fishing off of the plentiful waters surrounding their community. Over time, the powerful oil and gas industry has threatened this small, tight knit community's way of life, culminating with the 2010 Gulf of Mexico Deepwater Horizon oil spill disaster. Told from the point of view of the film's "David", local oyster fishing businessman Byron Encalade, we learn how a once prolific fishing community has nearly vanished.</i>	<i>Effects of Ocean Acidification on the Growth and Survival of Two Life Stages of the Blue Crab, Callinectes sapidus</i> Sarah Giltz, Tulane University Student	<i>The Impact of the Davis Pond Freshwater Diversion on Water and Sediment Exchange in Barataria Basin</i> Cyndhia Ramatchandirane, The Water Institute of the Gulf	<i>The intent of this session is to a) provide the audience with a short overview of the concept of Regional Sediment Management (RSM) and a couple case studies of how RSM combined with beneficial use of dredge material is restoring beaches and marshes along the Gulf Coast, then b) engage the audience and panelists in a dialogue on how RSM and beneficial use can be better applied to restore coastal Louisiana. Because successful RSM projects almost always take collaboration from the Army Corps, local or state partners, and stakeholders from the dredging area, this panel will have representatives from each.</i>	<i>Proper Use of Tidal Datum and Marsh Inundation Frequency for Marsh Creation Elevation Design</i> Julia Wall, CPRA
9:00 - 9:25		<i>Rangia Clam Decline in Lake Pontchartrain from 2001 to 2014 After an El Nino Southern Oscillation Shift Followed by a Period of High Hurricane Activity</i> Michael Poirrier, UNO	<i>Synergism of Seasonal Salinity and Water Temperature on Oysters and How a Fishery Responds</i> Earl Melancon, Nicholls State University & Louisiana Sea Grant Program	<i>Because successful RSM projects almost always take collaboration from the Army Corps, local or state partners, and stakeholders from the dredging area, this panel will have representatives from each.</i>	<i>Mississippi River Borrow Areas: Delineation, Competing Interests, and Coordination</i> Kodi Guillory, CPRA
9:25 - 9:50		<i>Predicting Potential Growth of Oysters in Barataria Bay Through a Dynamic Energy Budget Model Under Scenarios of Climate Change and River Management</i> Romain Lavaud, LSU	<i>Freshwater Diversions: 'No Good Deed Goes Unpunished'</i> Andrew C. Wilson, Esq., Simon, Peragine, Smith & Redfearn, LLP	Panelist: Linda Lillycrop, USACE or Jacqueline Keiser, USACE Carl Ferraro, Biologist, Alabama DCNR-State Lands Division, Coastal Stewardship Office Sean Duffy, Executive Director, Big River Coalition Maury Chatellier, CPRA	<i>Design of a Two-lift Marsh Creation Project: Grand Liard Marsh and Ridge Restoration</i> Tye Fitzgerald, CPRA
9:50 - 10:00		Moderator Facilitated Open Discussion	Moderator Facilitated Open Discussion	Moderator Facilitated Open Discussion	Moderator Facilitated Open Discussion

Time	209	210	211-212	213	RIVERGATE ROOM (First Floor)
	Deltaic Processes	Monitoring Programs	Nutrients and Diversions	Atchafalaya Perspectives: Exploring the Potential of the Mississippi River's Largest Diversion	Financing the Future: Exploring Potential Financing Mechanisms for Coastal Restoration and Protection
	Moderator: Angelina Freeman, CPRA	Moderator: Gillian Millar, Moffatt & Nichol	Moderator: Don Blancher, Moffatt & Nichol	Moderator: Bryan Piazza, The Nature Conservancy	Moderator: Mark Davis, Tulane Institute on Water Resources Law and Policy
8:30 - 8:35	Moderator Introduction	Moderator Introduction	Moderator Introduction	Moderator Introduction	<p>Dean Boyer, Research Fellow Steven Procopio, Public Affairs Research Council Angele Davis, Public Affairs Research Council</p> <p>Louisiana has set forth an ambitious plan for coastal restoration and protection, exemplified by the state's Coastal Master Plan. This panel will examine potential sources of funds as well as the practical and political hurdles that will need to be cleared to ensure that money is in place for the essential work of saving south Louisiana.</p>
8:35 - 9:00	<i>Modeling Plant Community Interactions with a Hydrogeomorphodynam-ic System</i> Christopher Fontenot, ULL Student	<i>Development of the Gulf of Mexico Habitat and Water Quality and Quantity Monitoring and Assessment Program for the RESTORE Council</i> Greg Steyer, USGS	<i>Importance of Hydrodynamic Forcing in Modeling the Fate of Nitrate in a Deltaic Floodplain</i> Alexandra Christensen, LSU Student	<i>Current Challenges and Opportunities for Atchafalaya Basin Sediment Utilization</i> April Newman, LDNR	
9:00 - 9:25	<i>Riverine Sediment Pulsing and Plant-Sediment Interactions Drive Changes in Sediment Dynamics in Naturally Created Deltas</i> Courtney Elliton, LSU Student	<i>System Wide Assessment and Monitoring Program (SWAMP) Update</i> Richard Raynie, CPRA	<i>Davis Pond River Diversion Project: Pre- and Post-Diversion Trends for Salinity Intrusion and Nutrient Removal</i> Andrew Stoddard, Dynamic Solutions, LLC	<i>Feasibility Study of the Increase Atchafalaya Flow to Terrebonne Project</i> Austin Feldbaum, CPRA	
9:25 - 9:50	<i>Soil Bulk Density Profiles from Marshes and Waterbottoms Influenced by the Caernarvon Freshwater Diversion</i> Ronny Paille, USFWS	<i>A Monitoring and Adaptive Management Framework to Support the Restoration of Resources Injured by the Deepwater Horizon Oil Spill</i> Melissa Vernon Carle, Earth Resources Technology, Inc., NOAA	<i>Impact of Mississippi River Diversions on Salinity Gradients and Estuarine Residence Time in Coastal Louisiana: A Numerical Modeling Study</i> Linlin Cui, LSU Student	<i>Responsive Ecological Infrastructures</i> Bradley Cantrell, Harvard	
9:50 - 10:00	Moderator Facilitated Open Discussion	Moderator Facilitated Open Discussion	Moderator Facilitated Open Discussion	Moderator Facilitated Open Discussion	

CONFERENCE SCHEDULE CONT.

10:00-10:30 Break with Morning Refreshments (Exhibit Hall)

10:30-12:00 Session Block V (Upstairs Meeting Rooms)

Time	201	205	206	207	208
	An Enduring Legacy: Louisiana's Croatian-Americans (57m32s)	Vertebrate Coastal Ecology and Restoration	Linking Social and Economic Processes in River Diversions	Time Scales of Subsidence and Landscape Evolution	Marsh Creation Design II: Using Construction Observations and Monitoring Data to Improve Marsh Creation Design
	Moderator: Michael Pasquier	Moderator: Shaye Sable, Dynamic Solutions, LLC	Moderator: Craig Colten, LSU	Moderator: Ehab Meselhe, The Water Institute of the Gulf	Moderator: Jerry Carroll, CPRA
10:30 - 10:35	Moderator Introduction	Moderator Introduction	Moderator Introduction	Moderator Introduction	Moderator Introduction
10:35 - 11:00	<i>The Croatians of Lower Plaquemines Parish have used grit and determination to build an oystering industry that has made Louisiana famous. Little-known even in their home state, the history of the tight-knit Croatian-American community is portrayed in this documentary through the lives of four figures who embody the 150-year Croatian experience in Louisiana. Seen at work on the water, in home movies, at social gatherings and in interviews in their homes, these figures put an immediate and compelling face on a people who have endured economic privation, hurricanes, loss of their homes, oil spills, and the never-ending toil of watery farming existence.</i>	<i>Coastal Ecology of Louisiana Carnivores</i> Mirka Zapletal, ULL Student	<i>Using River Diversions to Maximize Elevation Capital: Active vs. Inactive Deltaic Settings</i> Greg Snedden, USGS	<i>Threshold-level Land Building at the West Bay Mississippi River Diversion</i> Alex Kolker, LUMCON	<i>The Impacts of In-situ Soil Displacements on Settlement and Consolidation of Marsh Creation Fill: Lake Hermitage Marsh Creation</i> Rudy Simoneaux, CPRA
11:00 - 11:25		<i>Nekton Utilization of Dredged Material Marshes</i> Scott Harlamert, LSU Student	<i>Which Voices? Who Decides?: River Diversions and the Future of the Coast</i> Pamela Jenkins, UNO	<i>Load-driven Compaction in the Mississippi Delta</i> Elizabeth Chamberlain, Tulane University Student	<i>Analysis, Design, and Construction of Breach Repairs at the Scofield Island Back Barrier Marsh</i> Tye Fitzgerald, CPRA
11:25 - 11:50		<i>Coastwise Nutria Control Program</i> Catherine Normand, LDWF	<i>Evolving Economics: Toward Near Term Impact Assessments of River Diversion Projects</i> Rex Caffey, LSU AgCenter	<i>Causes of Accelerated Wetlands Loss in the Late 20th Century</i> Chris McLindon, New Orleans Geological Society	<i>Using Construction Monitoring Devices to Calibrate and Validate Settlement and Consolidation Models</i> Gregory Mattson, CPRA
11:50 - 12:00		Moderator Facilitated Open Discussion	Moderator Facilitated Open Discussion	Moderator Facilitated Open Discussion	Moderator Facilitated Open Discussion

Time	209	210	211-212	213	RIVERGATE ROOM (First Floor)
	Floating Medium: Web-based Communication Tools	Monitoring Programs	Wetland Carbon Storage	The Future of Restoration	Private Property Rights & Coastal Restoration (CLE)
	Moderator: Mark Osler, Michael Baker International	Moderator: Gillian Millar, Moffatt & Nichol	Moderator: Brian Perez, CH2M	Moderator: Ken Duffy, BEM Systems, Inc.	Moderator: Jim Wilkins, Louisiana Sea Grant
10:30 - 10:35	Moderator Introduction	Moderator Introduction	Moderator Introduction	Moderator Introduction	Moderator Introduction
10:35 - 11:00	<i>CPRA's Flood Risk and Resilience Viewer</i> Andrea Galinski, CPRA	<i>Programmatic Lessons Learned from the Coast-wide Reference Monitoring System (CRMS)</i> Sarai Piazza, USGS	<i>The Effect of River Diversions on Ecosystem-scale Carbon Budgets from Delta Plain Marshes</i> Guerry Holm, CH2M Hill	<i>Results of the Luling, Louisiana Wetland Carbon Credit Pilot Project</i> Sarah Mack, Tierra Resources	Panelist: Jim Wilkins, Louisiana Sea Grant Ryan Siedemann, Louisiana State Attorney General's Office David Peterson, Deputy General Counsel, CPRA
11:00 - 11:25	<i>Sea Level Rise and Coastal Flooding Impacts Viewer in Louisiana</i> Marian Hanisko, The Baldwin Group at NOAA	<i>Leveraging the Gulf of Mexico Coastal Ocean Observing System (GCOOS) Build-out Plan (BOP) with Louisiana's System Wide Assessment and Monitoring Program (SWAMP): Synergies for the Good of Louisiana</i> Stephanie Watson, GCOOS Regional Association	<i>Carbon Inventories Across Sediment Delivery Gradients in the Atchafalaya and Terrebonne Basins</i> Annabeth McCall, LSU Student	<i>Saving Coastal Forests for Future Generations: Coastal Forest Conservation Initiative</i> Honora Buras, CPRA	
11:25 - 11:50	<i>Determining Localized Risk Perception and Impacts of Projected Sea Level Rise to Enhance Stakeholder Mitigation Planning Through Visualization Tools</i> Tara Lambeth, UNO	<i>Louisiana Coastal Protection and Restoration Authority's Coastal Information Management System (CIMS): Overview</i> Craig Conzelmann, USGS	<i>Current and Historic Carbon Storage in Four Marsh Habitats in Coastal Louisiana</i> Leland Moss, The Water Institute of the Gulf	<i>The Status and Future of the Coastal Wetlands Planning, Protection, and Restoration Act Program</i> Brad Inman, CPRA	
11:50 - 12:00	Moderator Facilitated Open Discussion	Moderator Facilitated Open Discussion	Moderator Facilitated Open Discussion	Moderator Facilitated Open Discussion	

CONFERENCE SCHEDULE CONT.

12:00-1:30

Lunch Plenary: CPRA, The State of Implementation (Dining Hall)

1:30-3:00

Session Block VI (Upstairs Meeting Rooms)

Time	201	205	206	207	208
	Vanishing Pearls: The Oystermen of Pointe a la Hache (2014, 1h20m)	Fisheries Modeling	Linking Social and Economic Processes in River Diversions	Results from Recent Studies of Storm Surge Risk and Mitigation Options	Time Scales of Sediment Delivery for Land Building
	Moderator: Michael Pasquier, LSU	Moderator: Romain Lavaud, LSU	Moderator: Hilary Collis, NFWF	Moderator: Jordan Fischbach, RAND Corporation	Moderator: Alex Kolker, LUMCON
1:30 - 1:35	<i>For over a century, the people of Pointe a la Hache, Louisiana have survived by fishing off of the plentiful waters surrounding their community. Over time, the powerful oil and gas industry has threatened this small, tight knit community's way of life, culminating with the 2010 Gulf of Mexico Deepwater Horizon oil spill disaster. Told from the point of view of the film's "David", local oyster fishing businessman Byron Encalade, we learn how a once prolific fishing community has nearly vanished.</i>	Moderator Introduction	Moderator Introduction	Moderator Introduction	Moderator Introduction
1:35 - 2:00		Spatial and Temporal Fisheries Analysis Using Hydrocoast Maps Aimee Preau, LPBF	Socio-economic Analysis of Four Proposed Sediment Diversions in the Lower Mississippi River Mitch Andrus, Royal Engineers & Consultants, LLC	Feasibility of Storm Surge Protection for Lake Pontchartrain John Atkinson, Arcadis	Rapid Land Creation by a Major River Subdelta Elizabeth Chamberlain, Tulane University <i>Student</i>
2:00 - 2:25		Development of a Comprehensive Aquatic Systems Model (CASM) for the Mississippi River Delta Management Study Area (Part I) Kate Watkins, Dynamic Solutions, LLC	Economic Evaluation of Coastal Land Lost in Louisiana Stephen Barnes, LSU	Integrating Storm Surge and Rainfall Flood Hazards in Upper Barataria Hugh Roberts, Arcadis	Time Scales of Land Construction Associated with Sediment Diversions in Fine-grained Systems Anjali M. Fernandes, University of Connecticut
2:25 - 2:50		A Comprehensive Aquatic Systems Model (CASM) for Evaluating Coastal Restoration Projects in the Mississippi River Delta Management Study Area (Part II) Shaye Sable, Dynamic Solutions, LLC	Building the Gulf: Recommendations for Ensuring Benefits for Communities in Restoration Economy Jeffrey Buchanan, OxFam America	Current and Future Flood Risk in Greater New Orleans David Johnson, Purdue University	What Roles Do Hurricanes Play in Sediment Delivery to Subsiding River Deltas? Samuel Bentley, LSU
2:50 - 3:00		Moderator Facilitated Open Discussion	Moderator Facilitated Open Discussion	Moderator Facilitated Open Discussion	Moderator Facilitated Open Discussion

Time	209	210	211-212	213	RIVERGATE ROOM (First Floor)
	Mobility as Adaptation: Historical Contexts for Coastal Management in Louisiana	Mapping and Monitoring Techniques	Deltaic Soil Processes	History of Accelerated Land Loss, Oil and Gas Industry	Mid-basin Sediment Diversions: Program Management
	Moderator: Shirley Laska, Lowlander Center	Moderator: Whitney Broussard, ULL	Moderator: Alyssa Dausman, RESTORE Council	Moderator: Steve Mathies, MWH Global	Moderator: Jerry Carroll
1:30 - 1:35	Moderator Introduction	Moderator Introduction	Moderator Introduction	Moderator Introduction	Moderator Introduction
1:35 - 2:00	<i>Retreat from the Louisiana Coast: The Shifting Public Discussion and Policy Frameworks</i> Audrey Grismore, LSU Student	<i>Mapping Hurricane Impacts Behind Non- accredited Levees – Progressing LAMP in Coastal Louisiana</i> Jerri Daniels, Dewberry	<i>Seasonal and Spatial Variation of Surface Water Nitrate Concentrations and Water Flow in Delta Islands of Wax Lake Delta, Louisiana</i> Robert Twilley, LSU	<i>Analysis of Continuous GPS Data for Assessing Deep and Shallow Subsidence Processes in Southeast Louisiana</i> Joshua Kent, LSU	<i>CPRA Approach to Implementing Diversions</i> Brad Barth, CPRA
2:00 - 2:25	<i>Lifting the Anchor to Place: Changing Wetlands Management Regimes in Louisiana</i> Craig Colten, LSU	<i>Surveying Challenges and Solutions for Coastal Restoration Projects</i> Ricardo Johnson, John Chance Land Surveys, Inc.	<i>The Fate of Nitrate in Wetlands of Prograding Wax Lake Delta, an Emergent Coastal Deltaic Floodplain</i> Leanna Heffner, LSU	<i>Natural Capital Asset Management (NCAM)[™] for Oil and Gas Industry Sustainability and Optimization</i> Maureen Koetz, Koetz and Duncan, LLC	<i>Mid-Breton Diversion: Current Status and Path Forward</i> Glenn Ledet, CPRA
2:25 - 2:50	<i>The Grounds for Displacement: Migration Possibilities and Complexities on Louisiana's Gulf Coast</i> Jessica Simms, LSU	<i>Monitoring Louisiana Barrier Islands with Unmanned Aerial Systems</i> Gary LaFleur, Nicholls State University	<i>Successional Patterns of Soil Nutrient Stoichiometry Observed Along a Chronosequence of Coastal Deltaic Floodplain Development</i> Anika Aarons, LSU Student	<i>Using Oil and Gas Industry Data to Achieve Coastal Sustainability</i> Chris McLindon, New Orleans Geological Society	<i>Mid-Barataria Diversion: Current Status and Path Forward</i> Kodi Guillory, CPRA
2:50 - 3:00	Moderator Facilitated Open Discussion	Moderator Facilitated Open Discussion	Moderator Facilitated Open Discussion	Moderator Facilitated Open Discussion	Moderator Facilitated Open Discussion



STATE OF

HOSTED BY



PARTNERS



THE WATER INSTITUTE
OF THE GULF



EXCLUSIVE

WALTON FAMILY
FOUNDATION

RESTORE
THE MISSISSIPPI RIVER DELTA
MississippiRiverDelta.org



ch2mSM


moffatt & nichol

 MWH[®]

CDM
Smith



HNTB

Sea Grant
LOUISIANA

 ARCADIS | Design & Consultancy
for natural and
built assets

DIAMOND



THE COAST

PLATINUM



RESTORATION ON THE HALF SHELL



GOLD



CONFERENCE SCHEDULE CONT.

3:00-3:30

Break with Afternoon Refreshments (Exhibit Hall)

3:30-5:00

Session Block VII (Upstairs Meeting Rooms)

Time	201	205	206	207	208
	An Enduring Legacy: Louisiana's Croatian-Americans (57m32s)	Avian Habitat Use, Distribution, and Restoration Scenarios	Changing Course: Navigating the Future of the Lower Mississippi River	Storms and Waves in the Coastal Landscape	Increasing Sediment Retention
	Moderator: Michael Pasquier	Moderator: Shaye Sable, Dynamic Solutions, LLC	Moderator: Steve Cochran, EDF	Moderator: Jeffrey Melby, USACE	Moderator: Ehab Meselhe, The Water Institute of the Gulf
3:30 - 3:35	Moderator Introduction	Moderator Introduction	Moderator Introduction	Moderator Introduction	Moderator Introduction
3:35 - 4:00	<i>The Croatians of Lower Plaquemines Parish have used grit and determination to build an oystering industry that has made Louisiana famous. Little-known even in their home state, the history of the tight-knit Croatian-American community is portrayed in this documentary through the lives of four figures who embody the 150-year Croatian experience in Louisiana. Seen at work on the water, in home movies, at social gatherings and in interviews in their homes, these figures put an immediate and compelling face on a people who have endured economic privation, hurricanes, loss of their homes, oil spills, and the never-ending toil of watery farming existence.</i>	<i>Modeling Coastal Bird Distributions in Response to Restoration Scenarios</i> Katrina Hucks, ULL Student	<i>The Moffatt & Nichol Team Solution: The Giving Delta: A 'Systems Approach' to a Consolidated and Sustainable Lower Mississippi River Delta</i> Jonathan Hird, Moffatt & Nichol	<i>A Comparison of Modeled and Observed Wind Waves in Terrebonne Bay, LA</i> Thomas Everett, LSU Student	<i>Lower Mississippi River Water and Sediment Budget in Support of the Moffatt & Nichol Changing Course Design Competition Plan</i> Stokka Brown, Moffatt & Nichol
4:00 - 4:25		<i>Living on the Edge: An Assessment of Waterbird Habitat Use in Estuarine Wetlands of Barataria Basin, LA</i> Brett Patton, LSU Student	<i>The Studio MISI-ZIIBI Team Solution: The New MISI-ZIIBI Living Delta: An ECO 3D Approach to a Self-Organizing Sustainable Delta</i> John Hoal, H3 Studio	<i>Numerical and Experimental Study of Coastal Waves over Levee Structures</i> Ning Zhang, McNeese State University	<i>An Innovative River Diversion Concept for Accelerated Land Building</i> Fredrik Huthoff, HKV Consultants
4:25 - 4:50		<i>Loss of Quality of Habitat Leads to a Reduction in Nesting Success in Brown Pelicans</i> Kristen Wakeland, ULL Student	<i>The Baird Team Solution: A Delta for All</i> Rob Nairn, Baird & Associates	<i>Hurricane Storm Surge Response Rapid Prediction Using Surrogate Models</i> Jeffrey Melby, US Army Engineer & Development Center	<i>Efficient Retention of Mud for Land Building on the Mississippi Delta Plain</i> Christopher Esposito, Tulane University Student
4:50 - 5:00		Moderator Facilitated Open Discussion	Moderator Facilitated Open Discussion	Moderator Facilitated Open Discussion	Moderator Facilitated Open Discussion

5:00-7:00

Happy Hour Poster Session (Poster Lobby)

Time	209	210	211-212	213	RIVERGATE ROOM (First Floor)
	Louisiana's Strategic Adaptations for Future Environments (LA SAFE)	Mining Data for Effective Management	Soil Processes	Coastal Projects: From Feasibility to Implementation	Louisiana Oyster Law & Policy
	Moderator: Matthew Sanders, LSU	Moderator: Eric White, The Water Institute of the Gulf	Moderator: Alyssa Dausman, RESTORE Council	Moderator: Nedra Davis, CPRPA	Moderator: Andrew C. Wilson, Esq., Simon, Peragine, Smith & Redfearn, LLP
3:30 - 3:35	Moderator Introduction	Moderator Introduction	Moderator Introduction	Moderator Introduction	Panelists: Larry Marino, Oats & Hudson Cole Garrett, LDWF Melissa Daigle, Louisiana Sea Grant
3:35 - 4:00	<i>LA SAFE: Resettlement as a Resilience Strategy</i> Shirley Laska, Lowlander Center	<i>Status and Trends in Coastal Louisiana as Indicated by the Coast-wide Reference Monitoring System</i> Leigh Anne Sharp, CPRA	<i>Sustained Impacts on Louisiana Salt Marsh Greenhouse Gas Fluxes Following the Deepwater Horizon Oil Spill</i> Brian Roberts, LUMCON	<i>Overview of the Southwest Coastal Louisiana Feasibility Study</i> Jennifer Mouton, CPRA	
4:00 - 4:25	<i>LA SAFE: Retrofitting as a Resilience Strategy</i> Patrick Forbes, State of Louisiana Office of Community Development	<i>Quantifying Coastal Louisiana Wetland Resilience Using Large-scale Regional Monitoring Data</i> Krista Jankowski, Tulane University Student	<i>Biogeochemical Processes in Oiled and Unoiled Louisiana Salt Marshes: A Multiyear Analysis</i> Ariella Chelsky, LUMCON	<i>Opportunities and Challenges of Advancing LCA Projects Using In-kind Cross-crediting Provisions</i> Gary Hawkins, USACE	
4:25 - 4:50	<i>LA SAFE: Reshaping as a Resilience Strategy</i> Angela Lawson, State of Louisiana Office of Community Development	<i>Using CRMS Monitoring Data to Develop a Predictive Model of Marsh Transition to Open Water</i> Donald Schoolmaster, USGS	<i>Interactive Effects of Variable Hydrologic Regimes and Atmospheric (CO2) on Spartina alterniflora Salt March in Coastal Louisiana</i> Scott Jones, ULL Student	<i>A Resilient Future for an American Icon: Reducing Storm Surge Risk in the 'Big Easy'</i> Dan Grandal, Stantec	
4:50 - 5:00	Moderator Facilitated Open Discussion	Moderator Facilitated Open Discussion	Moderator Facilitated Open Discussion	Moderator Facilitated Open Discussion	

CONFERENCE SCHEDULE CONT.

8:00 – 9:00

Registration (Poster Lobby), Continental Breakfast (Exhibit Hall)

9:00 – 10:30

Session Block VIII (Upstairs Meeting Rooms)

Time	201	205	206	207	208
	Barge (2015, 1h15m)	Legal and Financial Approaches	2017 Coastal Master Plan I	Structural Risk Reduction I	Uncontrolled River Diversions
	Moderator: Michael Pasquier, LSU	Moderator: Barbara Keeler, EPA	Moderator: Karim Belhadjali, CPRA	Moderator: Nedra Davis, CPCRP	Moderator: Kevin Hanegan, Moffatt & Nichol
9:00 - 9:05	Moderator Introduction	Moderator Introduction	Moderator Introduction	Moderator Introduction	Moderator Introduction
9:05 - 9:30	<i>A towboat drifts down the Mississippi River, due for the port of New Orleans. The water, the banks, the bright lights of a port ahead; the lure of a coming paycheck and a home-cooked meal. This is the world of Barge. On board, dry land's misfits find purpose and direction twenty-eight days at a time as the steady hands of an industrial ecosystem teeming with line boats, fleet boats, and a few million tons of cargo moved each year. Barge is an intimate portrait of the machinery of American ambitions.</i>	<i>Legal Aspects of Coastal Change</i> Kelly Haggard, Riparian, Inc.	<i>The 2017 Coastal Master Plan Decision Framework</i> Karim Belhadjali, CPRA	<i>Multiple Lines of Defense Strategy Implementation – 10 Years Later</i> John Lopez, LPBF	<i>USFWS Delta NWR Sediment Diversion with Terraces Case Study</i> James Harris, USFWS
9:30 - 9:55		<i>Status and Challenges of Wetlands in Carbon Markets</i> Sarah Mack, Tierra Resources	<i>Outreach and Engagement for Louisiana's Comprehensive Master Plan for a Sustainable Coast</i> Nick Speyrer, Emergent Method	<i>Risk Assessment of Hurricane Storm Damage Risk Reduction System (HSDRRS) Closure Structures</i> Robert Turner, Southeast Louisiana Flood Protection Authority – East	<i>Backwater Hydrodynamics in Complex Channel Networks</i> Christopher Esposito, Tulane University Student
9:55 - 10:20		<i>Enhancing Financing Mechanisms for Louisiana Coastal Restoration</i> Scott Nadler, US Business Council for Sustainable Development	<i>Coastal Ecosystem Integrated Compartment Model (ICM): Modeling Framework</i> Ehab Meselhe, The Water Institute of the Gulf	<i>CPRA Levee Safety</i> William "Billy" Wall, CPRA	<i>Morphodynamics of the Initial Erosional Phase of the West Bay River Sediment Diversion</i> Brendan Yuill, The Water Institute of the Gulf
10:20 - 10:30		Moderator Facilitated Open Discussion	Moderator Facilitated Open Discussion	Moderator Facilitated Open Discussion	Moderator Facilitated Open Discussion

Time	209	210	211-212	213	RIVERGATE ROOM (First Floor)
	Community Response to Federal Policy	Natural Coastal Infrastructure I	Discussion Panel: Best Practices in Non-structural Flood Protection: Learning from History and Coastal Communities	Storm Surge Forecasting and Resilient Communities	Part I: Restoration on the Half Shell Louisiana's Coastal Land Loss Crisis
	Moderator: Mark Osler, Michael Baker International	Moderator: Tim Carruthers, The Water Institute of the Gulf	Moderator: Rosa Herrin, OxFam America	Moderator: Scott Hagen, LSU	Moderator: Robin Keegan, GCR
9:00 - 9:05	Moderator Introduction	Moderator Introduction	Moderator Introduction	Moderator Introduction	Moderator Introduction
9:05 - 9:30	<i>Proactive Risk Management: FEMA's Mitigation Support for Climate Resiliency</i> Jordan Williams, CDM Smith	<i>Living Shoreline Demonstration: Recent Experience on Design and Construction</i> Josh Carter, Coast & Harbor Engineering	Robert Verchick, Loyola University Pamela Jenkins, UNO Tyronne Edwards, Zion Travelers Cooperative Center Dan Bogen, BISCO	<i>Hurricane Storm Surge Forecasting Along the Northern Gulf of Mexico</i> Matthew Bilsie, LSU Student	<i>Our Delta Coast: The natural Processes that built the coast and the communities that followed</i> David Muth, NWF <i>What's at Risk: Loss of land means loss of community, economy, and culture</i> Jeff Hebert, City of New Orleans <i>Plan for Action: A suite of solutions and multiple lines of defense</i> Bren Haase, CPRA <i>Followed by Panel Discussion</i>
9:30 - 9:55	<i>Communities on the Coastal Fringe: A Case Study of the Impact of Flood Reduction Alternatives on the FEMA Flood Insurance Rate Map</i> Dax Douet, Fenstermaker	<i>Nature-based Coastal Infrastructure: Implementing Low-crested Artificial Oyster Reef Breakwaters into Restoration Practice</i> Kari Servold, Dewberry		<i>CERA: An Interactive ADCIRC Storm Surge and Wave Visualization Framework</i> Carola Kaiser, LSU	
9:55 - 10:20	<i>NOAA All-Hazards Risk / Threat Assessment for the Gulf of Mexico</i> Zachary Nixon, Research Planning, Inc.	<i>The Current and Future State of Living Shoreline Design</i> Erin Rooney, HDR		<i>Enhancing Coastal Resilience Through a New 'Community of Practice'</i> Margaret Reams, LSU Denise DeLorme, LSU	
10:20 - 10:30	Moderator Facilitated Open Discussion	Moderator Facilitated Open Discussion	Moderator Facilitated Open Discussion	Moderator Facilitated Open Discussion	

CONFERENCE SCHEDULE CONT.

10:30 – 11:00 Break with Morning Refreshments (Exhibit Hall)

11:00 – 12:30 Session Block IX (Upstairs Meeting Rooms)

Time	201	205	206	207	208
	Barge (2015, 1h15m)	Developing Partnerships for Resilience	2017 Coastal Master Plan II	Structural Risk Reduction II	Lower Mississippi River Dynamics
	Moderator: Michael Pasquier, LSU	Moderator: Rob Delaune, DEI	Moderator: Karim Belhadjali, CPRA	Moderator: Ignacio Harrouch, CPRA	Moderator: Carol Parsons Richards, CPRA Barbara Kleiss, USACE
11:00 - 11:05	Moderator Introduction	Moderator Introduction	Moderator Introduction	Moderator Introduction	Moderator Introduction
11:05 - 11:30	<i>A towboat drifts down the Mississippi River, due for the port of New Orleans. The water, the banks, the bright lights of a port ahead; the lure of a coming paycheck and a home-cooked meal. This is the world of Barge. On board, dry land's misfits find purpose and direction twenty-eight days at a time as the steady hands of an industrial ecosystem teeming with line boats, fleet boats, and a few million tons of cargo moved each year. Barge is an intimate portrait of the machinery of American ambitions.</i>	<i>Promoting Regional Resiliency</i> Robin Barnes, GNO, Inc.	<i>Integrated Compartment Model (ICM) Application: Scenarios, Uncertainties and Project Evaluations</i> Eric White, The Water Institute of the Gulf	<i>Using Engineering Logic in a Non-Traditional Format for Evaluating Shear Strength Gain</i> Brad Barth, CPRA	<i>LCA Mississippi Hydrodynamic Study Data Collection: Discharge Controls on Sediment Dynamics in the Lower Mississippi River</i> Thad Pratt, USACE
11:30 - 11:55		<i>Developing Resilience and Protection Strategies for Coastal Decision-makers</i> Traci Birch, LSU	<i>2017 Coastal Master Plan: Storm Surge and Wave Modeling Improvements and Preliminary Analysis</i> Hugh Roberts, Arcadis	<i>Geotechnical Design Adaptations</i> Sean Walsh, Eustis Engineering Services, LLC	<i>River Morphology Modeling</i> Alex McCorquodale, UNO
11:55 - 12:20		<i>Resilience Actions for Small and Medium Coastal Louisiana Businesses in Light of Environmental Changes</i> Alessandra Jerolleman, Lowlander Center	<i>An Updated Coastal Louisiana Risk Assessment (CLARA) Model to Estimate Flood Depths, Damage, and Risk Reduction Project Benefits</i> Jordan Fischbach, RAND Corporation	<i>Louisiana Flood Protection Design Guidelines</i> Jas Singh, CPRA	<i>Lowermost Mississippi River Management: Technical Investigation Program</i> Brian Vosburg, CPRA
12:20 - 12:30		Moderator Facilitated Open Discussion	Moderator Facilitated Open Discussion	Moderator Facilitated Open Discussion	Moderator Facilitated Open Discussion

Time	209	210	211-212	213	RIVERGATE ROOM (First Floor)
	Responses to a Risky Landscape	Natural Coastal Infrastructure II	Coastal Infrastructure Risk Reduction Projects	Educational Innovations for Coastal Restoration in Louisiana	Part II: Restoration on the Half Shell Bold Action in the face of Adversity
	Moderator: Craig Colten, LSU	Moderator: Estelle Robichaux, Environmental Defense Fund	Moderator: Sam Martin, CPRA	Moderator: Amy Clipp, LSU	Moderator: Robin Keegan, GCR
11:00 - 11:05	Moderator Introduction	Moderator Introduction	Moderator Introduction	Moderator Introduction	Moderator Introduction
11:05 - 11:30	<i>Native American Monumentality and Cultural Resilience in Coastal Louisiana: Case Studies from the Ellesly Mound</i> Jayur Mehta, Gulf Communities Research Institute	<i>Implementation of EcoSystems Artificial Reef at Shark Island, Vermilion Bay</i> Jennifer Snape, Gaea Consultants, LLC	<i>Houma Navigation Complex (HNC)</i> Reggie Dupre, Terrebonne Levee and Conservation District	<i>Louisiana Discovery, Integration, and Application Program (LaDIA): Focus on Science Communication to Innovate Outreach of University Research to Coastal Communities</i> Robert Twilley, LSU	<i>What is Needed? Leveraging decades of scientific and engineering studies of the coast to get to sediment diversions, marsh creation, and other important projects on the ground</i> Denise Reed, The Water Institute of the Gulf
11:30 - 11:55	<i>Assessing Trends Since the 1950s Till Present in Development of Coastal Infrastructure, Ecosystem Function and Indices of Societal Well-being in Coastal Louisiana</i> Scott Hemmerling, The Water Institute of the Gulf	<i>Evaluating the Effectiveness of Wetland Restoration on a Densely Vegetated Sand Berm Through RTK GPS and Terrestrial LiDAR Survey</i> Xukai Zhang, LSU	<i>Wetland Morphology Modeling in Support of the Design of the Increase Atchafalaya Flow to Terrebonne Diversion Project</i> Kevin Hanegan, Moffatt & Nichol	<i>Unlocking the Educational Value of Louisiana Coastal Restoration: Development of Web-based Active-learning Modules for Undergraduate Education</i> Emad Habib, ULL	<i>How Do We Pay for it? The coast is priceless, but restoration comes with a very real price tag</i> Kim Reyher, CRCL
11:55 - 12:20	<i>Inhabiting Risk: Insuranceable Alternatives for a Changing Environment</i> Liz Williams, LSU Coastal Sustainability Studio	<i>Successes and Failures During Seven Years of Assessing Three Types of Bio-engineered Oyster Reefs Used in Shoreline Erosion Control</i> Earl Melancon, Nicholls State University & Louisiana Sea Grant Program	<i>Update on the Mississippi River Reintroduction into Bayou Lafourche Project</i> Shannon Haynes, CPRA	<i>Watch the Delta Grow: Combining Scientific Research and Outreach Efforts Focused on the Wax Lake Delta to Create Science-based Educational Programs</i> Leanna Heffner, LSU	<i>What Happens Next? Upcoming milestones, next steps, and ways to be involved</i> Michael Ellis, CPRA
12:20 - 12:30	Moderator Facilitated Open Discussion	Moderator Facilitated Open Discussion	Moderator Facilitated Open Discussion	Moderator Facilitated Open Discussion	<i>Followed by Panel Discussion</i>

CONFERENCE SCHEDULE CONT.

12:30 – 2:00

Lunch Plenary: Mayor Mitch Landrieu, New Orleans,
The Water Institute of the Gulf, Student Award Presentations (Dining Hall)

2:00 – 3:30

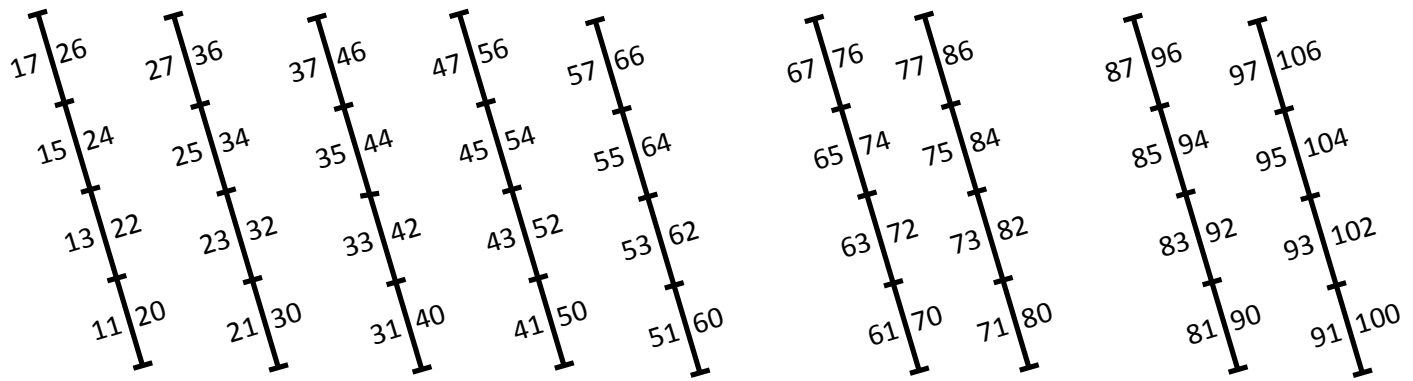
Session Block X (Upstairs Meeting Rooms)

Time	201	205	206	207	208
	Barge (2015, 1h15m)	Discussion Panel: Water Entrepreneurship in New Orleans	2017 Coastal Master Plan	Alluvial Borrow Pits	Discussion Panel: Operating Sediment Diversions for the Real World: Recommendations from an Expert Working Group
	Moderator: Michael Pasquier, LSU	Moderator: Virginia Hanusik, Propeller	Moderator: Karim Belhadjali, CPRA	Moderator: Brendan Yuill, The Water Institute of the Gulf	Moderator: Natalie Peyronnin, EDF
2:00 - 2:05	Moderator Introduction	Moderator Introduction	Moderator Introduction	Moderator Introduction	Moderator Introduction
2:05 - 2:30	<i>A towboat drifts down the Mississippi River, due for the port of New Orleans. The water, the banks, the bright lights of a port ahead; the lure of a coming paycheck and a home-cooked meal. This is the world of Barge. On board, dry land's misfits find purpose and direction twenty-eight days at a time as the steady hands of an industrial ecosystem teeming with line boats, fleet boats, and a few million tons of cargo moved each year. Barge is an intimate portrait of the machinery of American ambitions.</i>	<i>As climate change and catastrophic human-caused environmental destruction continue to wreak havoc on urban areas and the coast, urban water management systems and wetlands have become increasingly vital to our economy, ecosystem and coastal protection. This hour long panel will feature entrepreneurs working in coastal restoration and green infrastructure. Entrepreneurs will share opportunities they see and challenges they have faced.</i>	<i>Using Model Outputs to Inform the Development of the Master Plan</i> Denise Reed, The Water Institute of the Gulf	<i>Evaluation of Sediment Extraction Options in Alluvial Rivers Used as a Resource for Land-building</i> Ahmed Gaweesh, UNO	<i>The path to construction for a sediment diversion still has many obstacles to overcome. At this time, the CPRA is tackling engineering and design challenges concerning the size, location and type of structure, as well as modeling questions such as anticipated ecological, social and natural resource outcomes. This session will feature an overview presentation of the recommendations of an Operations Expert Working Group followed by an open discussion format to discuss specific recommendations.</i>
2:30 - 2:55			<i>Decision Support for the 2017 Coastal Master Plan</i> David G. Groves, RAND Corporation Water and Climate Resilience Center	<i>Establishing Refill Rate Estimates for Borrow Sites within the Atchafalaya River through Morphodynamic Modeling</i> Nick Cox, Moffatt & Nichol	
2:55 - 3:20			<i>Alternative Formulation for the 2017 Coastal Master Plan</i> Karim Belhadjali, CPRA	<i>The Effects of Turbulence on Borrow Pit Infilling in Rivers</i> Yushi Wang, The Water Institute of the Gulf	
3:20 - 3:30		Moderator Facilitated Open Discussion	Moderator Facilitated Open Discussion	Moderator Facilitated Open Discussion	Moderator Facilitated Open Discussion

Conference Adjourns! Don't forget to fill out the survey. Your feedback is valuable to us.

Time	209	210	211-212	213	RIVERGATE ROOM (First Floor)
	Marsh Creation	Natural Coastal Infrastructure III	Discussion Panel: Oh the Humanities!: Culture and Values in Coastal Restoration	Methods of Community Engagement	Parish Perspectives on Coastal Restoration and Protection Programs, Projects, and Funding
	Moderator: Tom Cancienne, MWH Global	Moderator: Barbara Keeler, EPA	Moderator: Craig Colten, LSU	Moderator: Nick Sims, USACE	Moderator: Chip Kline, CPRA
2:00 - 2:05	Moderator Introduction	Moderator Introduction	Moderator Introduction	Moderator Introduction	Moderator Introduction
2:05 - 2:30	<i>LCA BUDMAT Implementation</i> Darrel Broussard, USACE	<i>Restoration of Whiskey Island, AKA the NRDA Caillou Lake Headlands Project</i> Steve Dartez, Coastal Engineering Consultants	A roundtable on the role of the humanities in coastal protection and restoration will serve as an interdisciplinary forum for historians and anthropologists to stimulate conversations among scientists, engineers, policymakers, and planners on the need for more serious consideration of how we design for the future with the past and present in mind. Panelists: Carolyn Ware, LSU Christopher Morris, University of Texas at Arlington Andy Horowitz, Tulane Michael Pasquier, LSU	<i>Visualizing Coastal Landscape Dynamics: An Overview of the LSU Coastal Sustainability Studio's Visual Communication Program</i> Jacob Mitchell, LSU	Panelists: Jimmy Cantrelle, Lafourche Parish President Gordon Dove, Terrebonne Parish President Guy McInnis, St. Bernard Parish President Jeff Hebert, Chief Resilience Officer, City of New Orleans Ryan Bourriaque, Cameron Parish Administrator Marnie Winter, Jefferson Parish Assistant Director of Environmental Affairs Pat Brister, St. Tammany Parish President
2:30 - 2:55	<i>Beneficial Use of Mississippi River Navigation Dredged Material</i> Brett McMann, Arcadis	<i>Successful Swamp Restoration at the Caernarvon Freshwater Diversion and on the Maurepas Land Bridge, Southeast Louisiana</i> Theryn Henkel, LPBF		<i>Climate Change Adaptation: A Case Study of the Town of Jean Lafitte</i> Jeannette Dubinin, CPEX	
2:55 - 3:20	<i>Recent Construction of Ridge and Marsh Habitat Under the CWPPRA Program</i> Kimberly Clements, NOAA	<i>The Role of Stream Restoration and Natural Channel Design in Gulf Coastal Restoration</i> Lee Forbes, SWCA Envi- ronmental Consultants		<i>Engaging Stakeholders Through Design Research</i> Kari Smith, ULL	
3:20 - 3:30	Moderator Facilitated Open Discussion	Moderator Facilitated Open Discussion	Moderator Facilitated Open Discussion	Moderator Facilitated Open Discussion	Moderator Facilitated Open Discussion

POSTER PRESENTATIONS



Coastal Law, Economics, and Policy

- 11 Combining a Programmatic Environmental Impact Statement (EIS) under the National Environmental Policy Act (NEPA) and Project-Specific Analyses for Gulf Coast Restoration
Whitney Fiore, SWCA Environmental Consultants
- 13 EPA Region 6 Coastal Programs: Protecting and Restoring Louisiana
Karen McCormick, Environmental Protection Agency Region 6
- 15 Greenhouse Gas Emissions During Wetland Loss
Robert Lane, Louisiana State University

Coastal Societies

- 20 Oystower: Monitoring Coastal Resilience
Christopher James, Louisiana State University School of Architecture (Student)

Condition of Coastal Ecosystems

Coastal Fisheries

- 21 Modeling Eastern Oyster Growth and Production under Scenarios of River Diversion and Sea-level Rise
Kelvin Hu, U.S. Geological Survey Wetland and Aquatic Research Center
- 22 Eastern Oysters' Physiological Responses to Acute and Chronic Exposure to Suspended Sediments
Stephanie Bernasconi, Louisiana State University (Student)

Ecosystem Models

- 23 A Forested Floristic Quality Index Tool for the Coastwide Reference Monitoring System
Bernard Wood, Coastal Protection and Restoration Authority

Groundwater Dynamics

- 24 Characterization of Deltaic Sediments and their Potential as Pathways for Groundwater Discharge
Alexander Breaux, LUMCON / Tulane University
- 25 Geospatial Framework for Cataloging and Analyzing for Groundwater Withdraw Information
Fabiane Barato, University of Louisiana at Lafayette (Student)
- 26 Microscale Simulation of Micro and Nanoparticles Transport in Porous Media for Groundwater Remediation
Francesca Messina, The Water Institute of the Gulf
- 27 Depth to Groundwater: Interpolation Techniques Using Large Datasets from Groundwater Wells in Louisiana
Fabiane Barato, University of Louisiana at Lafayette (Student)

-
- 30 Loss of Habitat Connectivity Overrides Bottom-Up Nutrient Stimulation in Saltmarsh Food Webs
James Nelson, University of Louisiana at Lafayette
- 31 Ecotoxicological Consequences and Potential for Pollution Biomonitoring of the Introduction of the Channeled Apple Snail *Pomacea Canaliculata* in Louisiana
Sanjana Banerjee, University of Louisiana at Lafayette (Student)
- 32 Nutrient Mitigation Provided by Oyster Reefs in Coastal Louisiana
Phillip Westbrook, Louisiana State University (Student)

Data Visualization, Science Communication, and Community Outreach

- 34 How Far Away is the GOM?
Mark Shirley, Louisiana Sea Grant and LSU AgCenter
- 35 Bringing Cutting-edge Oceanography Research to a Broad Audience
Sarah Giltz, Tulane University (Student)
- 36 Vermilion Farm and Recreation Park: A Design for the Reduction of Groundwater Withdrawals
Kayla Rutherford, University of Louisiana at Lafayette (Student)
- 37 Anticipating Land Use Changes and Solutions for Water Quality, Ecosystem and Cultural Enhancement
Wendy Meche, University of Louisiana at Lafayette (Student)
- 40 Supporting Coastal Louisiana Outreach Efforts: Project Information Pages, Maps and Document Libraries
Lenis Richard, U.S. Geological Survey
- 41 Coastal Information Management System (CIMS) – An Overview of Louisiana’s Coastal Data Platform
Craig Conzelmann, U.S. Geological Survey
- 42 Coastal Information Management System (CIMS): A Workflow for Delivering High Quality Coastal Ecological and Geophysical Data
Lenis Richard, U.S. Geological Survey
- 43 Using an Extensible Web Mapping Framework to Visualize Coastal Louisiana Data
Chad Fanguy, U.S. Geological Survey
- 44 Automated Quality Control and Visualization of Real-time Nutrient Concentrations in Great Bay, NH
Nichole Halsey, Sea-Bird Coastal
- 45 Managing Geoscientific Data for Coastal Protection & Restoration - Louisiana Sand Resources Database (LASARD)
Beth Forrest, CB&I
- 46 Vegetative Releases for Beach, Marsh and Estuary Restoration in South Louisiana
Garret Thomassie, USDA Natural Resources Conservation Service

Disaster Risk Reduction, Impacts, and Recovery

- 47 Boussinesq Modeling of Hurricane Wave Induced Setup and Circulations in Louisiana Wetlands
Agnimitro Chakrabarti, Louisiana State University (Student)
- 50 Working through the Process of FEMA Levee Certification in New Orleans
Dave Moore, Tetra Tech, Inc.
- 51 Numerical Investigation of Wave Forces on Coastal Twin Bridge Decks
Guoji Xu, Louisiana State University (Student)
- 52 A Simplified Approach to Evaluating Multiple Benefits of Coastal Restoration and Flood Protection Projects in Louisiana
Brady Richard, Tetra Tech, Inc.
- 53 Prepare to Prevent – Reducing Flood Losses with the NFIP and Community Rating System
Jennifer Argote, Louisiana State University (Student)
- 54 Rabbit Island Beneficial Use Restoration Project
Benjamin Richard, Consultant
- 55 Determination of Hydroxyl Radical Rate Constant, Henry’s Law Constant and n-Octanol-Water Partition Coefficient of Sulfur-Containing Polycyclic Aromatic Hydrocarbons
Parichehr Saranjampour, Louisiana State University (Student)

POSTER PRESENTATIONS CONT.

Restoration in Practice

- 56 Field and Laboratory Testing of Levee Structures in Southwest Louisiana for Shoreline Protection
Dimitrios Dermisis, McNeese State University
- 57 Assessment of Wave Attenuation of EcoShield for Coastline Protection
Xukai Zhang, Louisiana State University (Student)
- 60 Coastal Resiliency Planning for Climate Change Adaptation at the Site Scale
Ed Morgereth, Biohabitats, Inc.
- 61 Addressing the Dynamics of Successive Vegetation on Beach Habitat as it Relates to Avian Populations
Erik Johnson, Barataria-Terrebonne National Estuary Program
- 62 Improving Bird Abatement and Acclimation Monitoring on Coastal Restoration Projects in Louisiana
Donald Norman, Norman Wildlife Consulting
- 63 Possible Applications of a Wave Suppressor and Sediment Collection System on Louisiana Coastlines
Brant Jones, University of Louisiana at Lafayette (Student)
- 64 Evolution of Mud-Capped Dredge Pits Following Excavation: Sediment Trapping and Slope Instability
Jeffrey Obelcz, Louisiana State University (Student)
- 65 Optimization of the Wave Suppression and Sediment Collection (WSSC) System by Computational Fluid Dynamics (CFD) Simulation
Salman Sakib, University of Louisiana at Lafayette (Student)
- 66 Application of Unmanned Aerial Vehicles to Monitor Ecological Indicators at Trinity Island, Louisiana
Frank Yrle, Nicholls State University (Student)
- 67 Competitive Mechanisms of *Festuca rubra* on Native *Leymus mollis* and Invasive *Ammophila arenaria* in Coastal Sand Dunes of the USA
Daniel Pingel, Kennesaw State University (Student)
- 70 Freshwater Bayou Bank Stabilization and Implications for Marsh Stability
Lindsay Nakashima, Audubon Louisiana
- 71 CWPPRA Project (BA-171) Caminada Back Barrier Marsh Creation Project
Adrian Chavarria, Environmental Protection Agency Region 6
- 72 East Mud Lake Marsh Management (CS-20): A Long-lived CWPPRA Hydrologic Restoration Project
Tommy McGinnis, Coastal Protection and Restoration Authority
- 73 CWPPRA Projects TE-20 and TE-24: Status of Restoration Efforts
Patricia Taylor, Environmental Protection Agency Region 6
- 74 CWPPRA Project - Hydrologic Restoration and Vegetative Planting in the Lac des Allemands Swamp (BA-34-2)
Barbara Aldridge, Environmental Protection Agency Region 6
- 75 A Comparison of Microbial Processes Linked to Important Ecosystem Services Between Restored Coastal Wetlands and Natural Coastal Wetlands in Barataria Bay, Louisiana
Sarah Wood, Louisiana State University (Student)
- 76 Implementing Small Dredge Technology as an Effective Countermeasure to Marsh Deterioration and Fragmentation
Karen Westphal, National Audubon Society
- 77 Restoration Status of Louisiana's Barataria Barrier Island Complex
Melissa Hymel, Coastal Protection and Restoration Authority

Restoring Deltaic Processes

- 80 Shallow Geologic Framework and Potential Sand Resources of a Paleo-barrier Shoreline, Terrebonne Bay, Louisiana, USA
Daniel Culling, Tulane University (Student)
- 81 Dredge Pit Evolution in Two Northern Gulf of Mexico Sites: What They Add to Our Understanding of Continental Shelf Sedimentation
Meg O'Connor, Louisiana State University (Student)
- 82 Interactive Effects of Elevation, Nutrient Regime, and Hydrology on Structuring Fresh and Intermediate Marsh Vegetation Communities
Meagan McCoy, University of Louisiana at Lafayette (Student)
- 83 Understanding Mississippi Delta Subsidence through Stratigraphic and Geotechnical Analysis of a Continuous Holocene Core
Jonathan Bridgeman, Tulane University (Student)
- 84 Long-Distance Delivery of Fine Sediment to Wetlands from a Bay-Head Delta: a Possible Analog for Large River-Sediment Diversions and Coastal Wetland Restoration
Jiaze Wang, Louisiana State University (Student)


-
- 85 Flow and Sediment Flux as a Function of Developing Deltas: Field Observations and Modeling in the Modern Delta
Tara Yocum, University of New Orleans (Student)
- 86 Expanded Small-Scale Physical Model (ESSPM) Quantitative Assessment #4: Experimental Investigation of the Model Sediment Properties
Mauricio Hooper, Louisiana State University (Student)
- 87 Characterization and Modeling of Settling, Consolidation, and Suspension to Optimize Sediment Retention of Sediment Diversions for Coastal Restoration
Xiaoyu Sha, Louisiana State University (Student)
- 90 Expanded Small-Scale Physical Model (ESSPM) Quantitative Assessment #2: Numerical Investigation of the Impact of Distortion on the Hydrodynamics and Sediment Transport In the Vicinity of Spillways and Diversions
Ali Heidarizhaleh, Louisiana State University (Student)
- 91 Development of a Flume for the Evaluation of Coastal Mudflat Sediment Erodibility
Pamela Judge, University of Massachusetts-Amherst (Student)

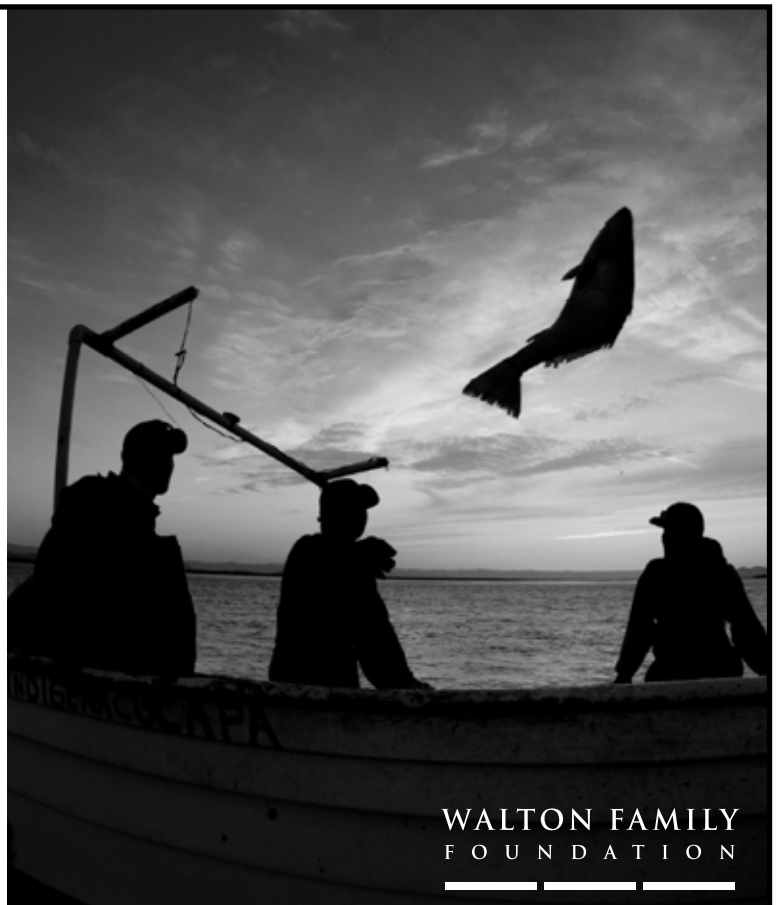
The 2017 Coastal Master Plan

- 92 2017 Coastal Master Plan Flood Risk and Resilience Program
Mandy Green, Coastal Protection and Restoration Authority
- 93 Development of Habitat Suitability Index Models for the 2017 Coastal Master Plan
Shaye Sable, Dynamic Solutions
- 94 Introduction to the 2017 Coastal Master Plan Future Scenarios
Yushi Wang, The Water Institute of the Gulf
- 95 Accounting for Gulf Regional Sea Level Rise in the State of Louisiana's 2017 Coastal Master Plan
James Pahl, Coastal Protection and Restoration Authority
- 96 Quality Assurance and Quality Control of the 2017 Coastal Master Plan Integrated Compartment Model
T. Stokka Brown, Jr., Moffatt & Nichol

Healthy Coasts Strong Local Economies

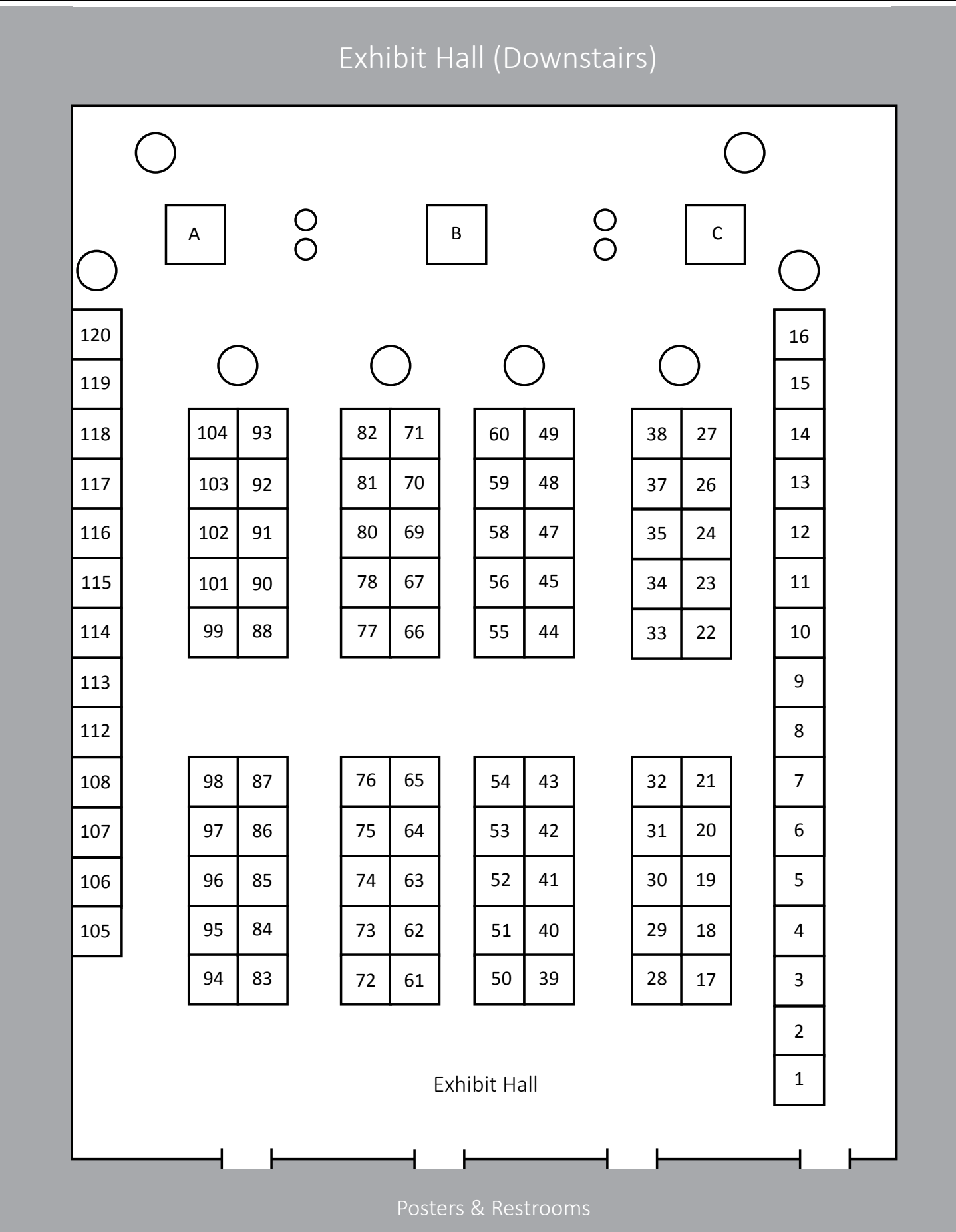
We believe that conservation solutions that make economic sense are the ones that stand the test of time.

waltonfamilyfoundation.org
 waltonfamilyfdn



WALTON FAMILY
FOUNDATION

EXHIBIT HALL MAP



EXHIBITOR CONTACT INFORMATION

A	<p>The Water Institute of the Gulf (TWIG) Contact: Chincie Mouton One American Place 301 N. Main Street, Suite 2000 Baton Rouge, LA 70825 Phone: 225.227.2723 Email: cmouton@thewaterinstitute.org URL: thewaterinstitute.org</p>	8	<p>Resilience Conference Contact: Sayde Finkel 1100 Poydras Street, Suite 3475 New Orleans, LA 70163 Phone: 504.527.6963 Email: sfinkel@gnoinc.org URL: gnoinc.org</p>
B	<p>Coalition to Restore Coastal Louisiana (CRCL) Contact: Jimmy Frederick 6160 Perkins Road, Suite# 225 Baton Rouge, La 70808 Phone: 225.767.4181 Email: jimmyf@crcl.org URL: www.crcl.org</p>	9	<p>Louisiana Shoreline Solutions, LLC Contact: Steve Ryder 1215 W. Holly Bellingham, WA 98225 Phone: 360.933.4807 Email: sryder@bellingham-marine.com URL: www.lynden.com/lss/index.html</p>
C	<p>Coastal Protection and Restoration Authority (CPRA) Contact: Chuck Perrodin P.O. Box 44027 Baton Rouge, LA 70804-4027 Phone: 225.342.7615 Email: chuck.perrodin@la.gov URL: coastal.la.gov</p>	10	<p>Ramboll Environ US Corporation Contact: Jason Shackelford 8235 YMCA Plaza Drive, Suite 300 Baton Rouge, LA 70810 Phone: 225.408.2856 Email: jshackelford@ramboll.com URL: www.ramboll-environ.com</p>
1-4	<p>Geoform International, Inc. Contact: Sam Minnich 521 Kansas City Road Olathe, KS 66061 Phone: 913.782.1166 Email: dinodredge@gmail.com URL: www.dinosix.com</p>	11	<p>Surveying and Mapping, LLC Contact: Robert Price 301 Main Street Suite 2200 Baton Rouge, LA 70825 Phone: 512.493.0236 Email: robert.price@sam.biz URL: www.sam.biz</p>
5	<p>R. Christopher Goodwin & Associates, Inc. Contact: James Schmidt 309 Jefferson Highway Ste. A New Orleans, LA 70121 Phone: 1.800.340.2724 Email: sschmidt@rcgoodwin.com URL: www.rcgoodwin.com</p>	12	<p>Restore America's Estuaries Contact: Jeff Benoit 2300 Clarendon Blvd, Suite 603 Arlington, VA 22201 Phone: 703-524-0248 Email: sponsor@estuaries.org URL: www.estuaries.org</p>
6	<p>ATKINS Contact: Luke LeBas 445 North Boulevard, Suite 805 Baton Rouge, LA 70802 Phone: 225.663.5150 Email: luke.lebas@atkinglobal.com URL: www.atkinglobal.com/northamerica</p>	13	<p>DHI Water & Environment Contact: Mikkel Andersen 141 Union Blvd, Suite 250 Lakewood, CO 80228 Phone: 303.937.4488 Email: mia@dhigroup.com URL: www.dhigroup.com</p>
7	<p>The Hydrographic Society of America - Southeast Chapter Contact: Mike Nitska PO Box 60341 Lafayette, LA 70596 Phone: 337.315.2190 Email: thsoa.sechapter@gmail.com URL: www.thsoa.org/Southeast-Chapter</p>	14-16	<p>CWPPRA Contact: Scott Wilson 700 Cajundome Blvd. Lafayette, LA 70506 Phone: 337.266.8644 Email: wilsons@usgs.gov URL: lacoast.gov</p>
		17-20 28-31	<p>Industrial Fabrics, Inc. Contact: Jamie Blanco 510 O'Neal Lane Extension Baton Rouge, LA 70819 Phone: 225.906.0758 Email: jblanco@ind-fab.com URL: www.ind-fab.com</p>

21	<p>Tensar Corporation Contact: Kristin Ezen 2500 Northwinds Pkwy, Suite 500 Alpharetta, GA 30009 Phone: 770.344.2122 Email: kezen@tensarcorp.com URL: tensarcorp.com</p>	27	<p>The Lens Contact: Anne Mueller 4344 Earhart Blvd Suite B New Orleans, LA 70125 Phone: 504.258.1624 Email: amueller@thelensnola.org URL: thelensnola.org</p>
22	<p>Delta Coast Consultants, LLC Contact: Barry Jason Kennedy 4924 Hwy 311 Houma, LA 70360 Phone: 985.655.3100 Email: brandiv@deltacoastllc.com URL: www.deltacoastllc.com</p>	32	<p>Digital Engineering Contact: Whitney Watson 527 West Esplanade Ave Suite 200 Kenner, LA 70065 Phone: 504.468.6129 Email: wwatson@deii.net URL: www.deii.net</p>
23-24 34-35	<p>LSU Coastal Studies Institute Contact: Sam Bentley Howe-Russell Geoscience Complex Old Geology Building, Room 331 Baton Rouge, LA 70803 Phone: 225.578.5735 Email: sjb@lsu.edu URL: www.csi.lsu.edu/index.html</p>	33	<p>Louisiana Sea Grant Contact: Robert Twilley Louisiana State University 239 SEA Grant Building Baton Rouge, LA 70803 Phone: 225.578.6517 Email: krobe@lsu.edu URL: www.laseagrant.org</p>
23-24 34-35	<p>LSU Center for Coastal Resiliency Contact: Scott C. Hagen 124C, Sea Grant Hall Baton Rouge, LA 70803 Phone: 225.578.7926 Email: shagen@lsu.edu URL: sites01.lsu.edu/wp/ored/</p>	37	<p>BEM Systems Inc Contact: Karen Lichtenfeld 8550 United Plaza Boulevard, Suite 702 Baton Rouge, LA 70809 Phone: 908.598.2600 x195 Email: klichtenfeld@bemsys.com URL: www.bemsys.com</p>
23-24 34-35	<p>LSU Coastal Sustainability Studio Contact: Mary Bergeron LSU Design Building, Room 212 Baton Rouge, LA 70803 Phone: 225.578.4990 Email: mberg41@lsu.edu URL: css.lsu.edu</p>	38	<p>CPEX Contact: Jeannette Dubinin 100 Lafayette Street Baton Rouge, LA 70801 Phone: 225.389.7244 Email: jdubinin@cpex.org URL: www.cpex.org</p>
23-24 34-35	<p>LSU Center for River Studies Contact: Clint Willson 3418 Patrick F. Taylor Hall Department of Civil & Environmental Engineering Baton Rouge, LA 70803 Phone: 225.715.7468 Email: cwillson@lsu.edu URL: sites01.lsu.edu/faculty/cwillson/river-model/</p>	39-41	<p>Okeanus Science & Technology/CSA Ocean Sciences Contact: Benton LeBlanc 2261 Denley Rd. Houma, LA 70363 Phone: 985.346.4666 Email: bleblanc@okeanus.com URL: www.okeanus.com</p>
26	<p>Gulf South Research Corporation Contact: Carey Lynn Perry 8081 Innovation Park Drive Baton Rouge, LA 70820 Phone: 225.757.8088 Email: clperry@gsrcorp.com URL: www.gsrcorp.com</p>	42	<p>ECO Magazine Contact: Greg Leatherman 7897 SW Jack James Dr. Suite A Stuart, FL 34997 Phone: 772.221.7720 Email: wschwerin@tscpublishing.com URL: www.ecomagazine.com</p>

EXHIBITOR CONTACT INFORMATION CONT.

43	Greater New Orleans Foundation Contact: Ella Delio 1055 Saint Charles Ave, Suite 100 New Orleans, LA 70130 Phone: 504.598.4663 Email: ella@gnof.org URL: www.gnof.org	52	Wayfarer Environmental Technologies, LLC Contact: Mike Turley PO Box 11937 New Iberia, LA 70563 Phone: 225.916.6382 Email: mike@wayfarertech.com URL: www.wayfarertech.com
44	COWI North America, Inc. Contact: Dennis Lambert 400 Poydras Street, Suite 1160 New Orleans, LA 70130 Phone: 504.206.7665 Email: delm@cowi.com URL: www.cowi-na.com	53	David Evans & Associates Contact: Mick Hawkins 14231 Seaway Rd, Suite 4002 Gulfport, MS 39503 Phone: 228.238.3163 Email: mhawkins@deainc.com URL: www.deamarine.com
45	Lonnie G. Harper & Associates, Inc. Contact: Leonard Harper 2746 Highway 384 Bell City, LA 70630 Phone: 337.905.1079 Email: harper@harper-group.com URL: harper-group.com	55	HDR Contact: Debra Hempel 5426 Bay Center Drive Tampa, FL 33609 Phone: 813.282.2444 Email: debra.hempel@hdrinc.com URL: www.hdrinc.com
47	JESCO Environmental & Geotechnical Services, Inc Contact: Tom Couste PO Box 1324 Jennings, LA 70546 Phone: 337.824.9074 Email: jesco@jesous.com URL: www.jescous.com	56	T. Baker Smith, LLC Contact: Kevin Beyer PO Box 2266 Houma, LA 70361 Phone: 225.228.5599 Email: kevin.beyer@tbsmith.com URL: www.tbsmith.com
48	Restore or Retreat, Inc. Contact: Simone Maloz 322 Audubon Drive PO Box 2048-NSU Thibodaux, LA 70310 Phone: 985.448.4485 Email: simone.maloz@nicholls.edu URL: www.restoreorretreat.org	58	Gaea Consultants, LLC Contact: Tonja Koob 536 Washington Ave New Orleans, LA 70130 Phone: 504.962.5360 Email: tonja.k.marking@gaeaconsultants.com URL: www.gaeaconsultants.com
49	Moffatt & Nichol Contact: Jonathan Hird 301 Main Street, Suite 800 Baton Rouge, LA 70825 Phone: 225.336.2075 Email: jhird@moffattnichol.com URL: www.moffattnichol.com	59	Audubon Louisiana Contact: Lauren Bourg 5615 Corporate Blvd., Ste 600B Baton Rouge, LA 70808 Phone: 225.768.0820 Email: lbourg@audubon.org URL: la.audubon.org
50-51	Delta Land Services Contact: Burt Brumfield 1090 Cinclare Drive Port Allen, LA 70767 Phone: 225.388.5197 Email: burt@deltaland-services.com URL: www.deltaland-services.com	60	Restore the Mississippi River Delta Coalition Contact: Jacques P. Hebert 3801 Canal Street, Suite 325 New Orleans, LA 70119 Phone: 225.768.8193 Email: jhebert@audubon.org URL: mississippiriverdelta.org

61	<p>Texas A&M Press Contact: Katelyn Knight John H. Lindsey Building Lewis Street 4354 TAMU College Station, TX 77843 Phone: 979.458.3984 Email: k_knight@tamu.edu URL: tamupress.com</p>	69	<p>Institute for Coastal and Water Research, University of Louisiana at Lafayette Contact: Mark W. Hester Institute for Coastal and Water Research University of Louisiana at Lafayette Lafayette, LA 70504 Phone: 337.482.5246 Email: mhester@louisiana.edu URL: coastalresearch.louisiana.edu</p>
62	<p>HUESKER Inc. Contact: Kevin Morgan 3701 Arco Corporate Dr. Suite 525 Charlotte, NC 28273 Phone: 704.526.8050 Email: kmorgan@hueskerinc.com URL: www.huesker.com/home.html</p>	70	<p>Mott MacDonald Contact: Josh Carter 650 Poydras Street, Suite 2025 New Orleans, LA 70130 Phone: 504.529.7687 Email: josh.carter@hatchmott.com URL: mottmacdonald.com/americas</p>
63	<p>Changing Course Contact: Brian Jackson 1875 Connecticut Ave, Suite 600 Washington, DC 20009 Phone: 202.492.1890 Email: bjackson@edf.org URL: www.changingcourse.us</p>	71	<p>CH2M Contact: Carlos Giron 700 Main St. Ste 400 Baton Rouge, LA 70802 Phone: 225.572.9639 Email: Carlos.Giron@CH2M.com URL: www.CH2M.com</p>
64	<p>Stanley Consultants Contact: Jeff Decoteau 721 Government Street, Suite 302 Baton Rouge, LA 70802 Phone: 225.388.4286 Email: decoteaujeff@stanleygroup.com URL: www.stanleyconsultants.com</p>	72	<p>Royal Engineers & Consultants, LLC Contact: Randy Smith 4298 Elysian Fields Ave, Suite B New Orleans, LA 70122 Phone: 504.283.9400 Email: rsmith@royalengineering.net URL: www.royalengineering.net</p>
65	<p>The University of New Orleans Contact: Malay Ghose Hajra 2000 Lakeshore Drive New Orleans, LA 70148 Phone: 504.280.7062 Email: mghoseha@uno.edu URL: www.uno.edu</p>	73	<p>Braun Intertec, Inc Contact: Ziad Alem, PE 440 Industrial Pkwy Lafayette, LA 70508 Phone: 504.218.9582 Email: zalem@braunintertec.com URL: www.braunintertec.com</p>
66	<p>C.H. FENSTERMAKER & Associates, L.L.C. Contact: Rene Escuriex 135 Regency Square Lafayette, LA 70508 Phone: 337.314.0498 Email: rene@fenstermaker.com URL: www.fenstermaker.com</p>	74	<p>Manchac Consulting Group, Inc. Contact: Danny Dehon, P.E. 10542 S. Glenstone Place Baton Rouge, LA 70810 Phone: 225.448.3972 Email: ddehon@manchacgroup.com URL: www.manchacgroup.com</p>
67	<p>Chenier Plain Coastal Restoration & Protection Authority Contact: Nedra Davis 7515 Jefferson Hwy #322 Baton Rouge, LA 70806 Phone: 225.333.8234 Email: nedra.davis@cpcrpa.org URL: www.chenierplain.org</p>	75	<p>Aquatic Informatics Contact: Matt Beyer 2400 – 1111 West Georgia St. Vancouver, BC V6E 4M3 Canada Phone: 602.810.0489 Email: matt.beyer@aquaticinformatics.com URL: www.aquaticinformatics.com</p>

EXHIBITOR CONTACT INFORMATION CONT.

76	GCR Inc. Contact: Mona Nosari 2021 Lakeshore Drive, Suite 500 New Orleans, LA 70122 Phone: 504.304.2500 Email: mnosari@grincorporated.com URL: www.grincorporated.com	84	The Dutra Group Contact: Denise Dutra 2350 Kerner Boulevard Suite 200 San Rafael, CA 94901 Phone: 415.721.1383 Email: ddutra@dutragroup.com URL: www.dutragroup.com
77	Weeks Marine, Inc. Contact: Chuck Broussard 304 Gaille Drive Covington, LA 70433 Phone: 985.875.2500 Email: anschexnayder@weeksmarine.com URL: www.weeksmarine.com	85	G.E.C. Inc Contact: R. Scott Knaus 8282 Goodwood Blvd Baton Rouge, LA 70806 Phone: 225.612.4212 Email: rsknaus@gecinc.com URL: www.gecinc.com
78	S&ME, Inc. Contact: Gerald J. Hauske, Jr. 2014 W. Pinhook Road, Suite 603 Lafayette, LA 70508 Phone: 337.408.3103 Email: jhauske@smeinc.com URL: www.smeinc.com	86	Coastal Environments, Inc. Contact: Sherwood Gagliano, Ph.D. 1260 Main Street Baton Rouge, LA 70802 Phone: 225.383.7455 Email: lcharles@coastalenv.com URL: www.coastalenv.com
80	AECOM Contact: Naveen Chillara 112 East Pecan Street, Suite 400 San Antonio, TX 78205 Phone: 210.293.2010 Email: naveen.chillara@aecom.com URL: www.aecom.com	87	USDA Natural Resources Conservation Society Contact: Britt Paul 3737 Government Street Alexandria, LA 71302 Phone: 318.473.7756 Email: britt.paul@la.usda.gov URL: www.la.nrcs.usda.gov
81	Stantec Consulting Services Inc Contact: Nicole Collins 500 Main Street Baton Rouge, LA 70801 Phone: 225.765.7400 Email: nicole.collins@stantec.com URL: http://www.stantec.com	88	Coastal Engineering Consultants Contact: Greg Grandy 5745 Essen Lane Baton Route, LA 70821 Phone: 225.706.5629 Email: ggrandy@ceci-la.com URL: www.coastalengineering.com
82	MWH Global, Inc. Contact: Jeffrey Duplantis 7742 Office Park Blvd., Suite C-2 Baton Rouge, LA 70809 Phone: 225.926.3991 Email: Jeffrey.L.Duplantis@mwhglobal.com URL: www.mwhglobal.com	90	Foundation For Louisiana Contact: Liz Williams 4035 Washington Ave New Orleans, LA 70125 Phone: 225.726.3623 Email: lwilliams@foundationforlouisiana.org URL: foundationforlouisiana.org
83	Crosby Dredging and Construction Contact: Aaron Guidry PO Box 279 Golden Meadow, LA 70357 Phone: 985.258.8343 Email: aguidry@crosbytugs.com URL: www.crosbytugs.com	91	Ardaman & Associates, Inc Contact: Donna McRae 316 Highlandia Dr. Baton Rouge, LA 70810 Phone: 225.752.4790 Email: dmcrade@ardaman.com URL: www.ardaman.com
		92	Tetra Tech Contact: Joe Cancienne 748 Main Street Suite B Baton Rouge, LA 70802 Phone: 225.383.1780 Email: joe.cancienne@tetrattech.com URL: www.tetrattech.com

93	HNTB Corporation Contact: Atri Sen 10000 Perkins Rowe, Suite 640 Baton Rouge, LA 70810 Phone: 225.368.2800 Email: asen@hntb.com URL: www.hntb.com	101	Dewberry Contact: Jerri Daniels 1615 Poydras Street Suite 1295 New Orleans, LA 70112 Phone: 504.872.3769 Email: rhernandez@dewberry.com URL: www.dewberry.com
94	Neel-Schaffer, Inc. Contact: Jerry Trumps 314 Audubon Blvd Lafayette, LA 70503 Phone: 337.232.6111 Email: jerry.trumps@neel-schaffer.com URL: www.neel-schaffer.com	102	Stream Wetland Services LLC Contact: Dean Roberts 2417 Shell Beach Drive Lake Charles, LA 70601 Phone: 337.515.4724 Email: droberts@streamcompany.com URL: streamwetlands.com
95	Survey Equipment Services / Macartney Inc. Contact: Alan Craig 1775 Wetborough Drive Katy, TX 77449 Phone: 832.978.8418 Email: acraig@ses-services.com URL: www.ses-services.com	103	The Water Campus Contact: Tina Rance 100 North Street, Suite 900 Baton Rouge, LA 70802 Phone: 225.709.1743 Email: trance@cprt.com URL: www.thewatercampus.org
96	RAND Corporation Contact: Elizabeth Thornton 650 Paydras St. Suite 1400 New Orleans, LA 70130 Phone: 504.299.3492 Email: ethornto@rand.org URL: www.rand.org	104	Arcadis Contact: David Escudee, PE 10352 Plaza Americana Drive Baton Rouge, LA 70816 Phone: 225.292.1004 Email: david.escude@arcadis.com URL: www.arcadis.com
97	Hunt, Guillot & Associates, LLC Contact: Lisa Oldenburg 9357 Interline Ave Baton Rouge, LA 70809 Phone: 225.927.6825 Email: lisa.oldenburg@hga-llc.com URL: hga-llc.com	105	Porter Lyons Contact: Ashley Porter Porter Lyons LLC/Care of Art Egg Studios 1001 South Broad Street #204 New Orleans, LA 70125 Phone: 650.291.4204 Email: porter@porterlyons.com URL: www.porterlyons.com
98	GeoEngineers Contact: Kylee Lewis 1195 Lakeland Park Blvd, STE100 Baton Rouge, LA 70809 Phone: 225.293.2460 Email: klewis@geoengineers.com URL: www.geoengineers.com	106	Mock Interview booth
		107	Job Postings booth
		108	Interview booth
99	Ellicott Dredges LLC Contact: Steve Miller 1611 Bush Street Baltimore, MD 21230 Phone: 410.302.4348 Email: smiller@dredge.com URL: www.dredge.com www.restorationdredge.com	112	Ocean Surveys, Inc. Contact: John Sullivan 129 Mill Rock Road East Old Saybrook, CT 06413 Phone: 860.388.4631 Email: jds@oceansurveys.com URL: www.oceansurveys.com
		113	Ellicott Dredge Technologies Contact: Michael Young 1750 Madison Avenue New Richmond, WI 54017 Phone: 913.642.5100 Email: myoung@imsdredge.com URL: www.imsdredge.com

EXHIBITOR CONTACT INFORMATION CONT.

- 114 Dynamic Solutions, LLC
Contact: Christopher Wallen
6421 Deane Hill Drive, Suite 1
Knoxville, TN 37919
Phone: 865.212.3331
Email: cmwallen@dslc.com
URL: www.dslc.com
- 115 OTT Hydromet
Contact: David Procyk
5600 Lindbergh Drive
Loveland, CO 80539
Phone: 512.288.5831
Email: dprocyk@otthydromet.com
URL: www.ott.com
- 116 Sigma Consulting Group, Inc
Contact: Michael Somme
10305 Airline Highway
Baton Rouge, LA 70816
Phone: 225.298.0800
Email: msomme@sigmacg.com
URL: www.sigmacg.com
- 117 Martin Ecosystems
Contact: Nicole Waguespack
6265 Benefit drive
Baton Rouge, LA 70809
Phone: 225.292.6750
Email: nicole@martinecosystems.com
URL: www.martinecosystems.com
- 118 Tierra Resources
Contact: Sarah Mack
1310 St. Andrew St., Suite 1
New Orleans, LA 70130
Phone: 504.339.4547
Email: sarahmack@tierraresourcesllc.com
URL: tierraresourcesllc.com
- 119 Ducks Unlimited
Contact: Leslie Suazo
218 Rue Beauregard, Suite K
Lafayette, LA 70508
Phone: 337.408.3288
Email: lsuazo@ducks.org
URL: www.ducks.org
- 120 Conoco Phillips
Contact: Phillip R. Precht
806 Bayou Black Drive
Houma, LA 70360
Phone: 985.853.3010
Email: phil.r.precht@cop.com
URL: www.conocophillips.com



NOTES

Student Presentation Award Winners:
Where are they now?
Jessica Henkel, SOC14
Graduate Talk, 2nd Place

I have been attending SOC since 2010, when I was a brand new PhD student. In 2012, with two years of field research under my belt, I was able to present a poster on the impact of the Deep Water Horizon spill on shorebirds, for which I received 2nd place for student presenters.



SOC14 was a particularly rewarding one. My presentation on the importance of the northern Gulf of Mexico to migratory shorebirds was awarded Best Student Presenter. I believe the recognition of my work helped propel me towards my current opportunity as a Science Policy Fellow with the National Academies of Sciences, Engineering and Medicine's Gulf Research Program where I am working with the Gulf Coast Ecosystem Restoration Council. My State of the Coast experiences have been invaluable for me to better understand the ecosystem restoration and scientific research activities taking place around the Gulf and the synergies between Gulf organizations, agencies, and academic programs.



Stewards of the built and natural environment.

We are 28,000 smart, talented and driven people committed to exceptional and sustainable outcomes. We collaborate. We innovate. We deliver results.

We are Arcadis.
Improving quality of life.

WWW.ARCADIS.COM



NOTES

[illegible]

NOTES

“WE CANNOT SOLVE OUR PROBLEMS WITH THE SAME THINKING WE USED WHEN WE CREATED THEM.”

— ALBERT EINSTEIN



moffatt & nichol

**CREATIVE PEOPLE,
PRACTICAL SOLUTIONS.®**

Illustration from winning entry to the Changing Course design competition by Moffatt & Nichol, West and LSU-CSS

Student Presentation Award Winners: Where are they now?

Michael Ramirez, SOC12

Best Student Poster

I have presented my research at two SOC Conferences, winning a Best Student Poster Award in 2012 and giving an oral presentation at SOC14. For me, attending SOC has been one of the most rewarding experiences of my academic career. I value SOC as a networking opportunity for career, academic, and research purposes. All of my prospective career options as a senior graduate student have come from relationships I made at SOC. One-on-one interactions with other scientists at these conferences have afforded me the opportunity to meet new collaborators and learn very interesting science.

I am in the final year of my PhD at Tulane University, with plans to finish this fall. I am currently writing the second chapter of my dissertation. I am also leading two projects, one studying the characteristics of turbulence induced by sand dunes on the bed of the Mississippi River through real-time observation and the other measuring the rates of organic carbon burial in New Zealand fjords.



COMMITTEES

Steering Committee Members

- Alyssa Dausman, RESTORE Council
- Brad Inman, USACE
- Clint Willson, LSU
- David Muth, NWF
- Denise Reed, The Water Institute of the Gulf
- Jeff Duplantis, MWH Global
- Jenny Kurz, CPRA
- Jonathan Hird, Moffatt and Nichol
- Kimberly Reyher, CRCL
- Maury Chatellier, CPRA
- Nedra Davis, Louisiana Civil Engineer Journal
- Rob Delaune, Digital Engineering, Inc.

Student Engagement Committee Members

- Alex Kolker, LUMCON
- Allyse Ferrara, NSU
- Harish Ratnayaka, Xavier University
- Jean Cowan, NOAA
- Jessica Trahan, Fenstermaker
- Malay Ghose Hajra, UNO
- Matthew Bethel, Louisiana SeaGrant
- Murty Kambhampati, SUNO
- Susan Tetroet-Bergeron, BTNEP
- Whitney Broussard, ULL

Sponsorship Committee Members

- Chuck Broussard, Weeks Marine
- Joe Cancienne, Tetra Tech
- Rene Escurieux, C. H. Fenstermaker & Associates, L.L.C.
- Jonathan Hird, Moffatt and Nichol
- T. Bradley Keith, Gulf Coast Strategies and Solutions, LLC
- Clair Marceaux, Cameron Parish Police Jury
- Atri Sen, HNTB
- Randy Smith, Royal Engineers and Consultants
- Nick Speyrer, The Water Institute of the Gulf
- Drew Ramsey, CRCL

Program Committee Members

- Alex Kolker, LUMCON
- Alisha Renfro, NWF
- Barbara Keeler, EPA
- Carey Perry, GSRC
- Cheryl Brodnax, NOAA
- Craig Colten, LSU
- Greg Snedden, USGS
- Hilary Collis, NFWF
- Ioannis Georgiou, UNO
- Jean Cowan, NOAA
- Jeffrey Carney, LSU / CSS
- Jenneke Visser, LSU
- Jonathan Hird, Moffatt and Nichol
- Maury Chatellier, CPRA
- Mike Pasquier, LSU
- Morgan Crutcher, CRCL
- Nina Reins, MWH Americas, Inc.
- Ning Zhang, McNeese University
- Sarah Bradley, USACE
- Tim Carruthers, The Water Institute of the Gulf
- Vaughan McDonald, LDWF

We think a little differently.

**At CH2M we bring innovative solutions
to Louisiana's coastal challenges.**



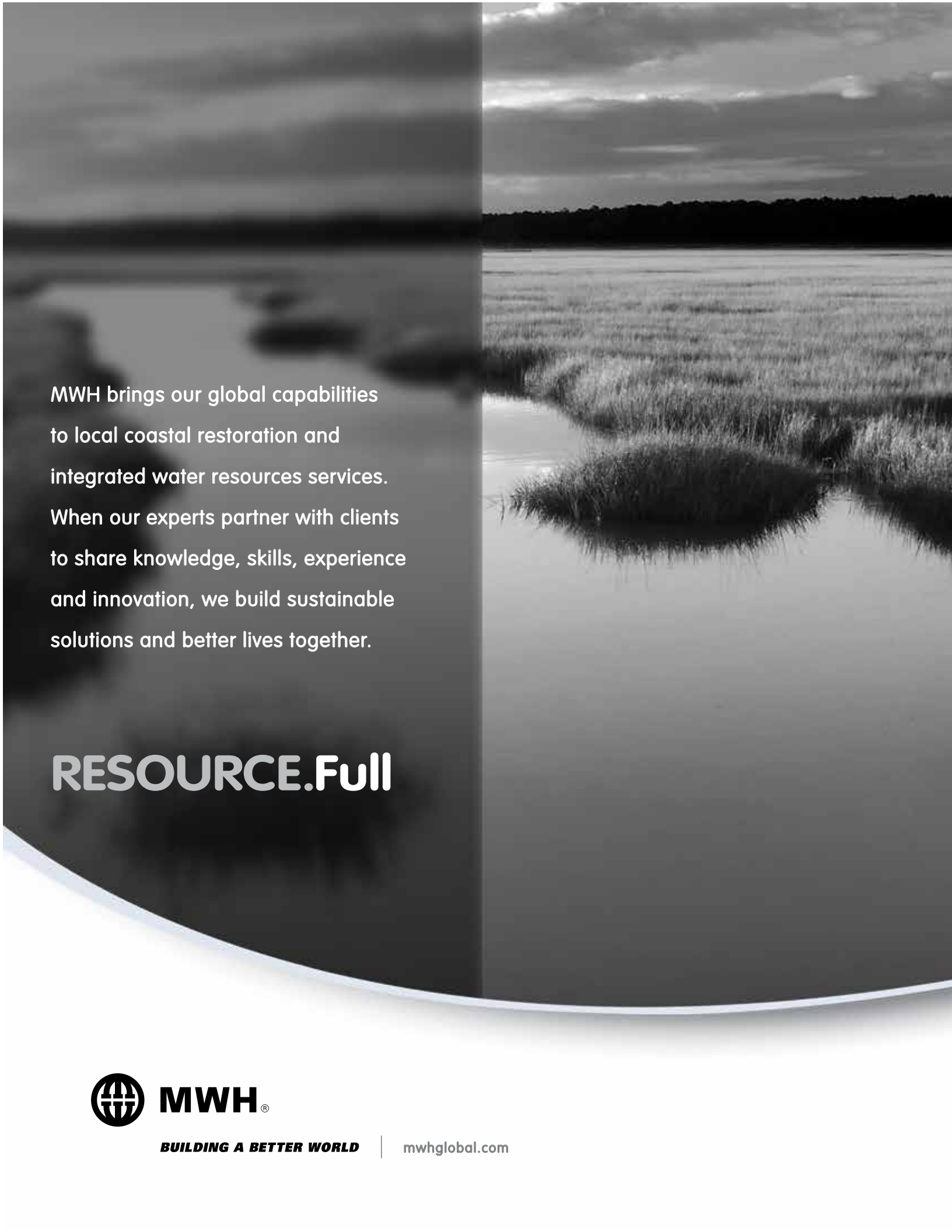
Louisiana Offices
Baton Rouge: 225-381-8454 | New Orleans : 504-832-9502

www.ch2m.com



ch2mSM

© 2016 CH2M HILL
EN0408161134MKE



MWH brings our global capabilities
to local coastal restoration and
integrated water resources services.
When our experts partner with clients
to share knowledge, skills, experience
and innovation, we build sustainable
solutions and better lives together.

RESOURCE.Full



BUILDING A BETTER WORLD

mwhglobal.com