

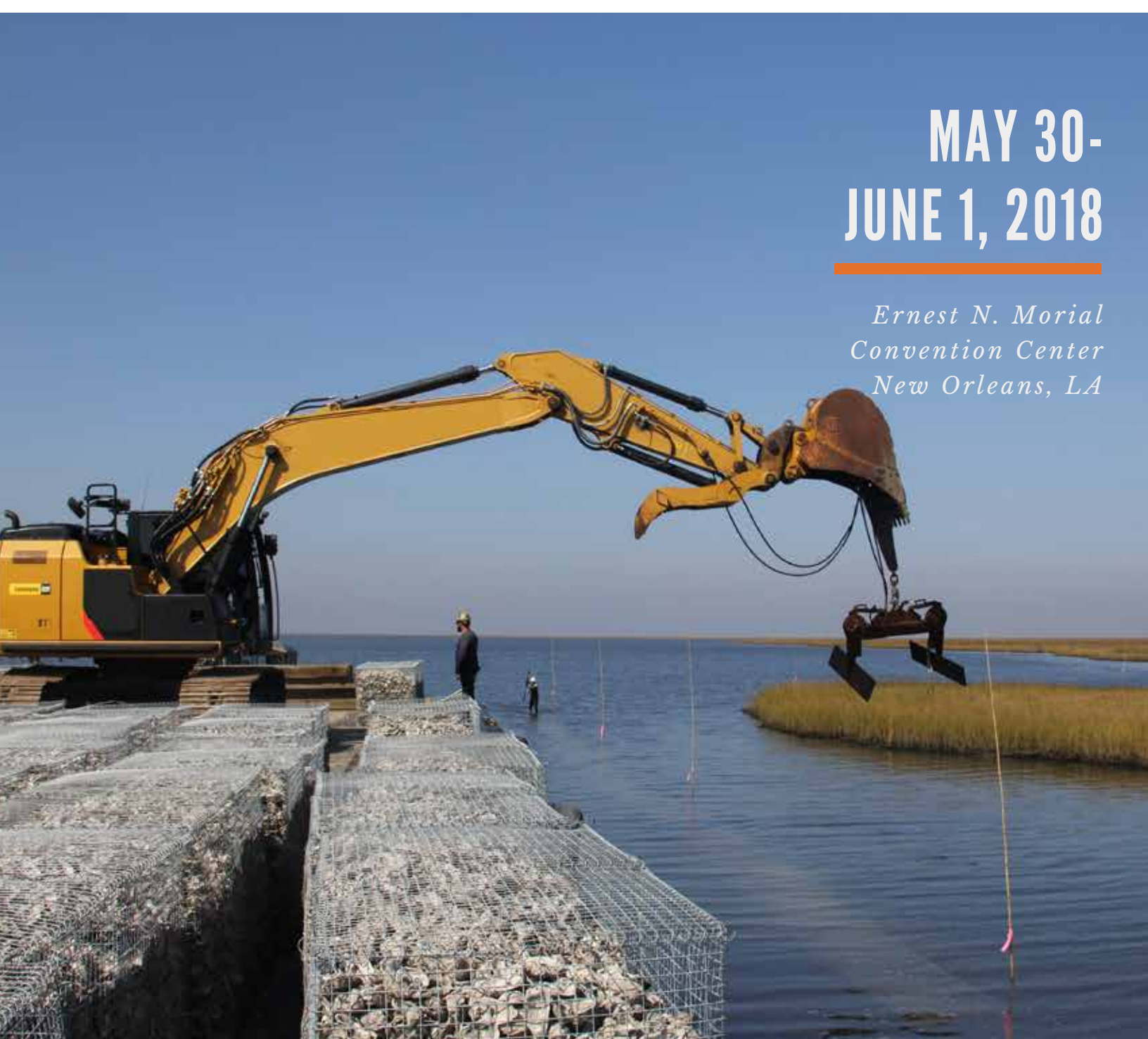


# STATE OF THE COAST

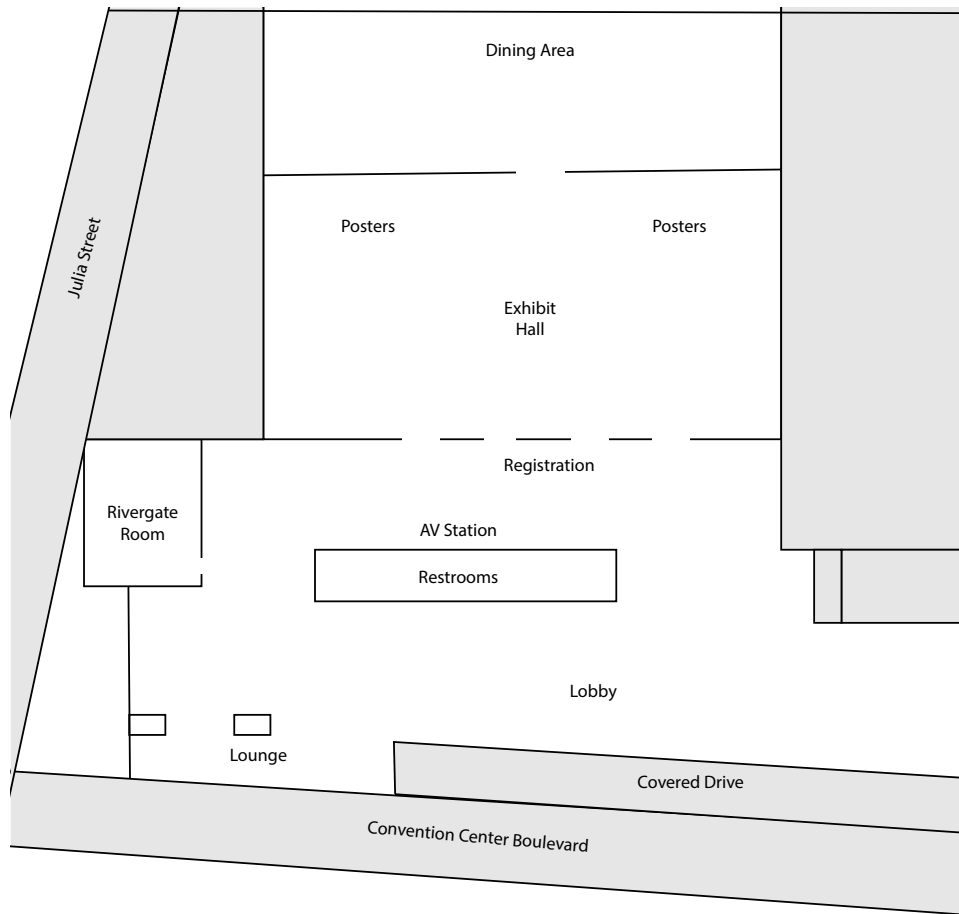
**MAY 30-  
JUNE 1, 2018**

---

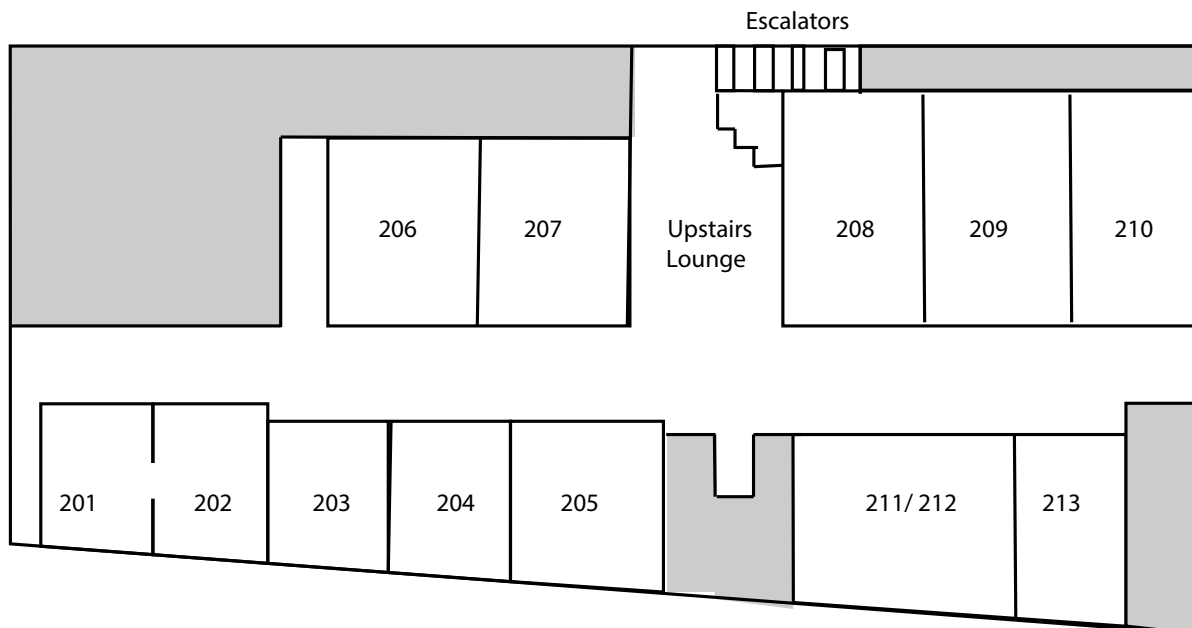
*Ernest N. Morial  
Convention Center  
New Orleans, LA*



# GREAT HALL



# MEETING ROOMS



# State of the Coast Conference

May 30 - June 1, 2018  
Morial Convention Center  
New Orleans, LA



# CONTENT

Agenda at a Glance.....5

Speaker Bios.....7

Conference Overview.....12

Conference Schedule

Wednesday, May 30.....14

Thursday, May 31.....20

Friday, June 1.....30

Session Descriptions.....34

Poster.....45

Exhibit Hall Map.....50

Exhibitor Contact Information.....51

SOC18 Committees.....59

Continuing Legal Education Information.....61

Women’s Coastal Leadership Breakfast Bios.....63



Wifi Network: SOC18  
Wifi Password: SOC18COAST

## About Our Cover

This is the construction of the first oyster reef made entirely with oyster shell collected by CRCL’s Oyster Shell Recycling Program. The reef was installed in 2016 in Biloxi Marsh (St. Bernard Parish), specifically along the shore of Lake Athanasio. This site was selected because it is experiencing particularly high rates of shoreline erosion and is also prime oyster habitat. The reef was constructed through a partnership with The Nature Conservancy and funded by the Coastal Protection and Restoration Authority and the National Fish and Wildlife Foundation. It consists of 434 Gabion baskets and filled with 1.7 million pounds of reclaimed oyster shell, stretching approximately a half mile along the shore.



# Agenda At A Glance

Wednesday, May 30	
7:30 AM – 7:00 PM	Registration
7:30 AM – 7:00 PM	Exhibit Hall open
7:30 AM – 9:00 AM	Continental Breakfast
9:00 AM – 10:00 AM	Opening Plenary
10:00 AM – 10:30 AM	Morning Break
10:30 AM – 12:00 PM	Session Block I
12:00 PM – 1:30 PM	Lunch
1:30 PM – 3:00 PM	Session Block II
3:00 PM – 3:30 PM	Afternoon Break
3:30 PM – 5:00 PM	Session Block III
5:00 PM – 7:00 PM	Welcome Reception
Thursday, May 31	
7:30 AM – 7:00 PM	Exhibit Hall open
7:30 AM – 7:00 PM	Registration
7:30 AM – 8:30 AM	Continental Breakfast
8:30 AM – 10:00 AM	Session Block IV
10:00 AM – 10:30 AM	Morning Break
10:30 AM – 12:00 PM	Session Block V
12:00 PM – 1:30 PM	Lunch
1:30 PM – 3:00 PM	Session Block VI
3:00 PM – 3:30 PM	Afternoon Break
3:30 PM – 5:00 PM	Session Block VII
5:00 PM – 7:00 PM	Happy Hour Poster Session
Friday, June 1	
7:30 AM – 12:30 PM	Registration
7:30 AM – 9:00 AM	Continental Breakfast
8:00 AM – 9:00 AM	Women's Coastal Leadership Breakfast
7:30 AM – 11:00 AM	Exhibit Hall open
9:00 AM – 10:30 AM	Session Block VIII
9:00 AM – 12:00 PM	Restoration on the Half Shell
10:30 AM – 11:00 AM	Morning Break & Student Awards
11:00 AM – 12:30 PM	Session Block IX
12:30 PM	Conference Concludes

---

**BECOME A  
MEMBER OF  
THE  
COALITION  
TO RESTORE  
COASTAL  
LOUISIANA  
FOR A CHANCE  
TO WIN  
A KAYAK**

---



---

# **FISH FOR DATA**

---

**REEL DATA. REAL SCIENCE.**

---

**CRCL.ORG**

**DOWNLOAD CRCL-FISH FOR DATA**   
**AT APP STORE OR GOOGLE PLAY** 

---

# SPEAKER BIOS

---



In order above: Kimberly Davis Reyher; Michael Ellis; Justin Ehrenwerth; Mayor LaToya Cantrell

## Welcome Address and Opening Keynote

**Wednesday 9:00 - 10:00, Great Hall Dining Area**

---

### **Kimberly Davis Reyher**

Executive Director, Coalition to Restore Coastal Louisiana

Ms. Reyher joined the Coalition to Restore Coastal Louisiana in 2014. Under Kim's leadership, CRCL has convened candidate forums to focus state leaders on coastal issues, developed "The 300" project to inspire Louisiana's next generation of coastal leaders and continued CRCL's science-based policy advocacy and volunteer restoration programs. Kim joined CRCL after 13 years with the World Wildlife Fund, where she worked with fisheries and the seafood industry to advance sustainable management. Kim co-led the development of a \$29 million tuna management project with the United Nations FAO, directed the International Smart Gear Competition which awards cash prizes for fishing gear innovations and supervised projects in 20+ countries. She holds a bachelor's degree in Geography from Dartmouth College and a master's degree in Natural Resource Economics and Policy from Duke University. A Gulf Coast native with deep roots in Tampa, Kim moved to New Orleans in 2011.

### **Michael Ellis, P.E**

Executive Director, Louisiana Coastal Protection and Restoration Authority

Mr. Ellis joined the Coastal Protection and Restoration Authority in 2016. Michael joined CPRA after serving as Louisiana Manager at HDR Engineering where he focused on coastal sustainability projects and municipal water and wastewater projects. Previously, he served as Program Manager of the Baton Rouge sanitary sewer consent decree program, where he managed 85 program team members and multiple sub-consultants and had oversight of 100 design and construction projects valued at approximately \$1.5 billion. Michael holds two bachelor's degrees in Civil Engineering and in International Trade and Finance from Louisiana State University. He is licensed to practice engineering in the State of Louisiana.

### **Justin Ehrenwerth**

President and CEO, The Water Institute of the Gulf

Mr. Ehrenwerth joined The Water Institute of the Gulf in 2017. Justin joined the Institute after serving as the inaugural Executive Director of the Gulf Coast Ecosystem Restoration Council created in the aftermath of the BP Deepwater Horizon oil spill to direct billions in civil and administrative penalties for Gulf Coast ecosystem and economic restoration. He served as Chief of Staff to the U.S. Deputy Secretary of Commerce where he assisted the Secretary and Deputy Secretary in overseeing issues of management, policy, and strategic planning for the Department. Justin also served as Assistant Counsel to the President where he took the lead on Deepwater Horizon litigation for the White House working with the Department of Justice. He holds a bachelor's in Philosophy from Colby College, a master's in Philosophy and a master's in Politics and Economics from the University of Oxford, and a J.D. from the University of Pennsylvania Law School.

---

## SPEAKER BIOS - CONT.

---



In order above: Johnny Bradberry; Governor John Bel Edwards; Marvin E. Odum

### **Johnny Bradberry**

Executive Assistant for Coastal Activities and Chairman of the Coastal Protection and Restoration Authority Board

Mr. Bradberry was appointed by Governor John Bel Edwards as Chairman in 2016. He joined the Governor after serving as Secretary of the Louisiana DOTD. In 2005, His department played a critical role in preparation, response, and recovery efforts for Hurricanes Katrina and Rita. Johnny was integral to the development of the state's first coastal master plan and for establishing the vision for corresponding implementation plans for coastal protection and restoration. Johnny also has served in the private sector as President of TOPCOR Services, CEO for TOPCOR Companies; and Board of Directors and Vice President of Business Development for Volkert, Inc and spent 28 years with energy giant ConocoPhillips. He holds a bachelor's degree in Mechanical Engineering from LeTourneau College and a master's degree in Industrial Engineering from LSU.

### **Honorable John Bel Edwards**

Governor of Louisiana

Governor Edwards began his public service in 2008 when he was elected to the Louisiana House of Representatives from District 72. He served the people of District 72 for eight years until the voters of Louisiana elected him governor in November 2015. Governor Edwards grew up in Amite, Louisiana as one of eight children. With four Tangipahoa Parish Sheriffs in his lineage, he learned the importance of public service at an early age. Governor Edwards served eight years as an Airborne Ranger on active duty with the United States Army and commanded a rifle company in the 82nd Airborne Division at Fort Bragg, North Carolina. Governor Edwards graduated in 1988 from the United States Military Academy at West Point and graduated Order of the Coif from Louisiana State University Law Center and set up a civil law practice in his home town of Amite.

---

## Plenary Lunch - Wednesday

**12:00-1:30, Great Hall Dining Area**

### **Marvin E. Odum**

Chief Recovery Officer, City of Houston

Water, Water Everywhere: A conversation on urban flood resilience at the intersection of public and private sectors.

Mr. Odum serves as chief recovery officer for the City of Houston. He was appointed by Mayor Sylvester Turner in September 2017 after the historic damage Houston suffered as a result of Hurricane Harvey. He is retired chairman and president of Shell Oil Company and executive committee member of Royal Dutch Shell. He began his Shell career as an engineer in 1982 and served in a number of management positions. He also led Shell's major role in supporting New Orleans' recovery after Hurricane Katrina. He is a member of the Council on Foreign Relations and board member of the National Urban League. In addition, he is a member of the Dean's Council of the John F. Kennedy School of Government at Harvard University, and the Advisory Board of the Cockrell School of Engineering at The University of Texas at Austin. He earned a bachelor's degree in mechanical engineering from The University of Texas at Austin and a master's degree in business administration from the University of Houston.

---

## SPEAKER BIOS - CONT.

---



In order above: Dr. Jason Clay; Dr. Robert Twilley

---

### Plenary Lunch - Thursday

**12:00-1:30, Great Hall Dining Area**

**Jason Clay, Ph.D**

Senior Vice President for Markets and Food, World Wildlife Fund

Partnerships and Platforms: Learning at the speed and scale of change.

Dr. Clay joined the World Wildlife Fund in 1993 as a Consultant. Jason has taught at Harvard and Yale and spent 15 years with human rights NGOs working with indigenous people, refugees, and famine victims. In 1988, he invented Rainforest Marketing, created one of the first US fair-trade ecolabels, and set up a trading company within an NGO. He has co-convened multi-stakeholder roundtables of producers, investors, buyers, researchers, and NGOs to identify and reduce the impacts of salmon, soy, sugarcane, cotton, and beef. In the past, Jason launched aquaculture, agriculture, and market transformation programs within the WWF Network. He has helped create corporate commitments around deforestation and brought attention to global issues such as illegality, degraded land, and long-term contracts to use the market to change it. He is the author of 20 books and is National Geographic's first-ever Food and Sustainability Fellow. He was awarded the 2012 James Beard Award for his work on global food sustainability. Jason studied at Harvard University and the London School of Economics and holds a doctorate in anthropology and international agriculture from Cornell University.

---

### Student Awards - Friday

**10:30, Exhibit Hall**

**Robert R. Twilley, Ph.D.**

Executive Director, Louisiana Sea Grant College Program

Professor, Oceanography and Coastal Sciences

President, Coastal and Estuarine Research Federation

Dr. Twilley joined Louisiana Sea Grant College Program in 2012. Robert also currently serves as Past-President-of Coastal and Estuarine Research Federation, an international coastal science society. He has been a Distinguished Professor at both LSU and UL Lafayette. Robert is the founder of the LSU Coastal Sustainability Studio and developed the UL Lafayette Center for Ecology and Environmental Technology. His research has focused on coastal systems ecology both in the Gulf of Mexico, throughout Latin America, and in the Pacific Islands. Robert has been involved in developing ecosystem models coupled with engineering and landscape designs to formulate adaptation strategies for coastal communities. Robert holds a bachelor's and master's from East Carolina University, a doctorate in Systems Ecology from the University of Florida, and post-doctoral studies at University of Maryland Center for Coastal Oceanography.

---



## THE WATER INSTITUTE OF THE GULF®

# APPLIED RESEARCH. TECHNICAL SUPPORT.

The Water Institute is a not-for-profit, independent applied research and technical services institution with a mission to help coastal and deltaic communities thoughtfully prepare for an uncertain future. Through an integrated and interdisciplinary approach, our work helps to create more resilient communities, thriving economies, and a healthy environment.

### OUR FOCUS AREAS

Integrated watershed management

Resilience Lab

Dynamics of rivers, deltas, and coasts

Ecosystem-based management

Human and natural systems modeling

For more information about the Institute's research capabilities and how they can benefit your organization, visit [www.thewaterinstitute.org](http://www.thewaterinstitute.org) or contact [info@thewaterinstitute.org](mailto:info@thewaterinstitute.org).

*Because life happens at the water's edge*



@THEH2OINSTITUTE



# Louisiana's Coastal Program Since 2007:

**\$20  
BILLION**

SECURED FOR  
PROTECTION &  
RESTORATION  
PROJECTS IN  
20 PARISHES

**130  
MILLION**

CUBICYARDS  
OF FILL UTILIZED

**41,305  
ACRES**

OF LAND  
BENEFITED

**297  
MILES**

OF LEVEE  
IMPROVEMENT

**60  
MILES**

OF BARRIER  
ISLANDS & BERMS  
CONSTRUCTED  
OR UNDER  
CONSTRUCTION



## CPRA ANNUAL SPENDING OF \$630M-\$840M SUPPORTS:

\$460 to \$620 million in  
**wages** each year

\$1.1 to \$1.5 billion in  
**annual output**

\$590 to \$785 million in **value added**  
to the state's economy each year

**7,800 to 10,500 jobs** each year, with average  
wages = \$59,000/year (state's average wage of \$41,000)

"Regional Impacts of Coastal Land Loss and Louisiana's Opportunity for Growth"  
LSU College of Business, Economics Policy Research Group, March 2017



**@LouisianaCPRA**  
**www.coastal.la.gov**

# CONFERENCE OVERVIEW

DAY I - WEDNESDAY									
	205	206	207	208	209	210	211-212	213	Rivergate Room
I	Ecosystem Responses to Mangrove Expansion in Coastal Louisiana	Financing Coastal Restoration: Efforts Underway to Align Projects and Dollars	Deepwater Horizon Oil Spill: Coastal Project Implementation and Path Forward	Unlocking Water and Sediment Policy to Facilitate Restoration and Protection in Practice	Hurricane Protection and Flood Risk Reduction in Coastal Louisiana	Mississippi River Mid-Basin Sediment Diversion Program	Preparing the Next Generation of Louisianans for Coastal Challenges Ahead: Strategies to Educate and Inform	Recent Studies on Subsidence in Coastal Louisiana	Station 15
LUNCH - GREAT HALL DINING AREA									
	205	206	207	208	209	210	211-212	213	Rivergate Room
II	Submerged Aquatic Vegetation (SAV) Habitats in an Evolving Coast and Changing Climate	Louisiana Coastal Program Law and Policy	Hydrologic Restoration in Southwest Louisiana: Challenges and Opportunities	Planning and Restoration of the Built and Natural Environment	2017 Master Plan Impacts on Storm Surge and Risk	Modern Processes in the Lower Atchafalaya River System	The Role of Higher Education in Preparing a Coastal Workforce	Integrating Subsurface Geology and Geophysics into Coastal Resiliency	On Our Watch
III	Research and Response into the Die-back of Roseau Cane and Infestation by the Scale Insect <i>Nipponaclerda biwakoensis</i> in Southern Louisiana	Putting Public-Private Partnerships to Practice to Support the Working Coast	<b>Rockefeller Wildlife Refuge- Management in an Ever-changing Environment in SW Louisiana</b>	Building Support for Coastal Restoration in Louisiana Through Volunteerism	Performance and Assessment of Coastal Flood Structures	Implementation Progress of the System Wide Assessment and Monitoring Program (SWAMP)	Public Access, Private Property and the Legislature's Attempt to Find a Solution	Using Offshore Sand for Barrier Island Restoration	<i>Diversions Keepers of teh Mound Born on the Bayou</i>
DAY II - THURSDAY									
	205	206	207	208	209	Born on the Bayou"	211-212	213	Rivergate Room
IV	Avian Response to Restoration Activities	Implementing Master Plan Marsh Creation Projects	Backfilling Canals: Progress and Pratfalls	Building Partnerships for Coastal Resilience	Comprehensive Community Resilience: From Planning to Action	Utilizing Mississippi River Water and Sediment Resources - from Analysis to Implementation	Strategies for Cultivating Social and Economic Justice in Coastal Restoration Planning	Adaptive Management Highlights from Louisiana CPRA	<i>Finding Common Ground</i>
V	Evaluating Ecological Relationships and Responses in Louisiana's Estuaries	Restoration of Louisiana's Barrier Shorelines: Application of Soft and Hard Coastal Protection Approaches	Alternate Shoreline Protections	Working Together for our Working Coast	Assessing and Enhancing Community Resilience	Dynamics of Diversion Receiving Basins	Engaging Urban Coastal Communities in Restoration	Creative Approaches to Monitoring the Outputs and Outcomes of Restoration Activities	Out Da Bayou



[illegible]

# Wednesday, May 30, 2018 - Conference Schedule

Concurrent Sessions – Session Block I [10:30am - 12noon]					
	Room 205	Room 206	Room 207	Room 208	Room 209
	Session 1	Session 2	Session 3	Session 4	Session 5
Session Title	Ecosystem Responses to Mangrove Expansion in Coastal Louisiana	Financing Coastal Restoration: Efforts Underway to Align Projects and Dollars	Deepwater Horizon Oil Spill: Coastal Project Implementation and Path Forward	Unlocking Water and Sediment Policy to Facilitate Restoration and Protection in Practice	Hurricane Protection and Flood Risk Reduction in Coastal Louisiana
Moderator	Devyani Kar Environmental Defense Fund	Lacy McManus Greater New Orleans, Inc.	Maury Chatellier CPRA	Chris Dalbom Tulane University	Glenn Ledet, Jr. CPRA
10:30	Introduction & Overview	Introduction & Overview	Introduction & Overview	Introduction & Overview	Introduction & Overview
10:35am	John Day Louisiana State University  Mississippi Delta Restoration: Shifting Baselines, Diminishing Resilience and Growing Non-Sustainability	<b>PANELISTS:</b> <b>Stephen Barnes</b> Louisiana State University <b>Shannon Cunniff</b> Environmental Defense Fund <b>Simone Theriot Maloz</b> Restore or Retreat <b>Charles Sutcliffe</b> Governor's Office of Coastal Activities  This panel will focus on financing coastal restoration and the key initiatives underway in the coastal financing space.	Maury Chatellier CPRA  Oil Spill Settlement Funding Programs: NRDA, NFWF, RESTORE	Derek Brockbank American Shore and Beach Preservation Association  A Coastal Sediment Crisis of Dust Bowl Proportions: Why We Need a New Deal for Beneficially Using Sediment	Ignacio Harrouch CPRA  Louisiana Levee Districts and Hurricane Protection Programs: Funding, Implementation, Operations, and Maintenance
10:55am	Christina Powell Louisiana State University  Influence of Black Mangrove Expansion on Aquatic Communities and Food Webs of Salt Marshes in Eastern Coastal Louisiana		Joseph Wyble CPRA  NRDA Projects and Path Forward	Ryan Clark Water Institute of the Gulf  Environmental Flows in Louisiana: A Statewide Water Budget Framework and a Pilot Study for Assessing Freshwater Flow Impacts to Louisiana Estuaries	Mitch Marmande Delta Coast Consultants  Houma Navigation Canal (HNC) Lock Complex – Applications of Salinity Control and Flood Protection
11:15am	Brian Roberts Louisiana Universities Marine Consortium  High Spatial Variability in Biogeochemical Rates and Microbial Communities across Louisiana Salt Marsh Landscapes		Chris Allen CPRA  NFWF Projects and Path Forward	Brian K. Batten Dewberry  Risk-Informed Flood Resilience Planning In Virginia Beach, Virginia	Rickey Brouillette CPRA  Planning Future Hurricane Protection in South Central and South West Louisiana
11:35am	Victor Rivera-Monroy Louisiana State University  Hydroperiod and Stoichiometry Ratios Control Foliar Decomposition Rates in Marsh-Mangrove Ecotones in Coastal Louisiana		Vida Carver CPRA  RESTORE Projects and Path Forward	Dave Buzan Freese and Nichols  Environmental Flows in Texas: Successes and Lessons Learned	Durund Elzey USACE, New Orleans District  Innovative Partnerships with the U.S. Army Corps of Engineers (USACE) and the Future of the 408 Process
11:55	Discussion	Discussion	Discussion	Discussion	Discussion
12:00	Luncheon and Keynote Speaker [Dining Hall]				

## Concurrent Sessions – Session Block I [10:30am - 12noon]

	Room 210	Room 211-212	Room 213	Rivergate Room (First Floor)
	Session 6	Session 7	Session 8	Session 9
Session Title	Mississippi River Mid-Basin Sediment Diversion Program	Preparing the Next Generation of Louisianans for Coastal Challenges Ahead: Strategies to Educate and Inform	Recent Studies on Subsidence in Coastal Louisiana	<i>Station 15</i>
Moderator	Brad Barth CPRA	Robert Thomas Loyola University	Syed Khalil CPRA	
10:30	Introduction & Overview	Introduction & Overview	Introduction & Overview	Introduction & Overview
10:35am	Rudy Simoneaux CPRA  Mississippi River Mid-Basin Sediment Diversion Program: <i>The State Of The Program</i>	<b>PANELISTS:</b> <b>Ivan Gill</b> University of New Orleans College of Education <b>Dinah Maygarden</b> University of New Orleans Pontchartrain Institute for Environmental Sciences <b>Heather Niemic</b> LSU AgCenter's Youth Wetlands Program <b>Kristi Trail</b> Lake Pontchartrain Basin Foundation  This panel will focus on preparing the next generation to face Louisiana's coastal challenges. Panelists will discuss their strategies used to educate students and create an informed citizenry.	Mark Byrnes Applied Coastal Research & Engineering Inc.  Modern Subsidence Rates in Barataria Basin Derived from High-Resolution GPS Surveys	<b>Station 15 (22m)</b> <b>Kira Akerman, Director (2017)</b>  Takes a unique look at the flooding problem that plagues New Orleans. The Crescent City is a place where flooding occurs all too regularly, water resources are often inaccessible and polluted, and outdated water management practices continue to sink an already low-lying city. The many lives impacted by a single pumping station are seen through the eyes and words of a young person living in the nearby neighborhood.
10:55am	Kodi Guillory CPRA  Mid-Barataria Sediment Diversion Design and Construction Considerations		Jaap Nienhuis Florida State University  A New Subsidence Map for Coastal Louisiana	
11:15am	Joseph "Wes" LeBlanc CPRA  Thinking Outside of the Future Box: <i>Sediment Diversion Operations, Monitoring, and Adaptive Management</i>		Leigh Anne Sharp CPRA  Elevation Changes in Louisiana's Coastal Wetlands Based on CRMS Data	
11:35am	Josh Crowe Jacobs  Mississippi River Mid-Basin Sediment Diversion Program: <i>The Path Forward</i>		Alex Kolker Louisiana Universities Marine Consortium  An Analysis of Subsidence Rates and Patterns within the Barataria and Terrebonne Basins using Seamless LIDAR Surveys	
11:55	Discussion	Discussion	Discussion	Discussion
12:00	<b>Luncheon and Keynote Speaker</b> <i>[Dining Hall]</i>			

# Wednesday, May 30, 2018 - Conference Schedule

Concurrent Sessions – Session Block II [1:30pm - 3:00pm]					
	Room 205	Room 206	Room 207	Room 208	Room 209
	Session 10	Session 11	Session 12	Session 13	Session 14
Session Title	Submerged Aquatic Vegetation (SAV) Habitats in an Evolving Coast and Changing Climate	Louisiana Coastal Program Law and Policy	Hydrologic Restoration in Southwest Louisiana: Challenges and Opportunities	Planning and Restoration of the Built and Natural Environment	2017 Master Plan Impacts on Storm Surge and Risk
Moderator	Kristin DeMarco Louisiana State University	David A. Peterson CPRA	Chris Allen CPRA	Alessandra Jerolleman Jacksonville State University	Brett McMann Arcadis
1:30	Introduction & Overview	Introduction & Overview	Introduction & Overview	Introduction & Overview	Introduction & Overview
1:35pm	<b>Ken Heck</b> Dauphin Island Sea Lab and University of South Alabama  Shifting Species Interactions and the Tropicalization of Northern Gulf of Mexico SAV Habitats	<b>PANELISTS:</b> <b>Beaux Jones</b> Baldwin, Haspel, Burke & Mayer, LLC <b>Richelle Moore</b> CPRA <b>David Peterson</b> CPRA <b>Ryan Seidemann</b> Louisiana Department of Justice <b>Megan Terrell</b> Louisiana Governor's Office  This session presents a discussion of current legal and policy issues impacting Louisiana's Coastal Program.  Panelists include government, coastal and private attorneys actively engaged in advising and counseling various public and private clients relative to the State of Louisiana's integrated coastal protection efforts. The panel will focus on rights issues, including public and private lands, environmental law policies and ecosystem restoration permitting issues, mitigation banking, and innovative project delivery methods, including outcome based performance contracting.	<b>Chris Allen</b> CPRA  Early Design of the Calcasieu Salinity Control Measures Project	<b>Michael Biros</b> Waggonner & Ball Architects  The Cyborg Garden	<b>Zachary Cobell</b> Arcadis  Impacts to Surge and Waves Due to the 2017 Coastal Master Plan
1:55pm	<b>Andrea Jerabek</b> Water Institute of the Gulf  Implications of Coastal Change on Population and Habitat Value for Blue Crabs		<b>Cyndhia Ramatchandirane</b> Water Institute of the Gulf  Supporting Restoration Design – Data Collection and Numerical Modeling of the Calcasieu Ship Channel Estuarine System	<b>Honora Buras</b> CPRA  The Significance of the Maurepas Swamp to Past, Present, and Future Generations	<b>Ricardo Sanchez</b> RAND Corporation  Evolution of Planning Analysis to Support the Louisiana Coastal Master Plan: 2012 to 2017 and Beyond
2:15pm	<b>Kristin DeMarco</b> Louisiana State University  Submerged Aquatic Vegetation in Barataria Bay, Louisiana: Seasonal and Spatial Patterns		<b>Arpit Agarwal</b> Mott MacDonald  Calcasieu Salinity Control Measures: Hydrodynamic Modeling to Support Design of Salinity Barriers	<b>Elizabeth Calvit</b> Jacobs  Creating A Beneficial Use Site in the Biloxi Marsh Complex, St. Bernard Parish, LA	<b>David Johnson</b> Purdue University  Flood Risk and Damage Assessment for Louisiana's 2017 Coastal Master Plan
2:35pm	<b>Michael Poirrier</b> University of New Orleans  Salinity Zonation of Pontchartrain Basin SAV and Changes in Lake Pontchartrain SAV Abundance Since 1953 due to ENSO Shifts and Hurricanes		<b>Sergio Gaitan</b> Tetra Tech  Challenges in the Design of Salinity Barriers	<b>Corey Miller</b> CRCL  Supporting Louisiana's Shrimp Fishery in a Restored Coastal Environment	<b>Jordan Fischbach</b> RAND Corporation  Risk Reduction Benefits and Costs from Louisiana's 2017 Coastal Master Plan
2:55	Discussion	Discussion	Discussion	Discussion	Discussion
3:00	<b>Break with Afternoon Refreshments</b> <i>[Exhibit Hall]</i>				

## Concurrent Sessions – Session Block II [1:30pm - 3:00pm]

	Room 210	Room 211-212	Room 213	Rivergate Room (First Floor)
	Session 15	Session 16	Session 17	Session 18
Session Title	<b>Modern Processes in the Lower Atchafalaya River System</b>	<b>The Role of Higher Education in Preparing a Coastal Workforce</b>	<b>Integrating Subsurface Geology and Geophysics into Coastal Resiliency</b>	<b><i>On Our Watch</i></b>
Moderator	<b>Jun Xu</b> Louisiana State University	<b>Robin Barnes</b> Greater New Orleans, Inc.	<b>Elizabeth McDade</b> Chinn-McDade Associates LLC	
1:30	Introduction & Overview	Introduction & Overview	Introduction & Overview	Introduction & Overview
1:35pm	<b>Kevin Hanegan</b> Moffatt & Nichol  Preliminary Design of a Major Freshwater Diversion: The Increase Atchafalaya Flow to Terrebonne Project	<b>PANELISTS:</b> <b>Robert Collins</b> Dillard University <b>John Nicklow</b> University of New Orleans <b>Dan McCarthy</b> Southeastern Louisiana University <b>William Wainwright</b> Northshore Technical Community College  This panel will explore the role of higher education in ensuring Southeast Louisiana becomes a hub of innovation and high quality labor for coastal protection and restoration.	<b>Mark Kulp</b> University of New Orleans  Old Data Used in New Ways: Industry-based Seismic Data Used to Evaluate the Effect of Cenozoic Faults on Holocene Strata of Lakes Borgne and Pontchartrain	<b><i>On Our Watch</i> (59m)</b> <b>Jonathan Evans</b> , Director (2017)  Examines the origins of wetlands erosion and subsidence, which combined with sea level rise, are producing projections of accelerating land loss and increased flooding and destruction of coastal communities. The film explains the complicated issues surrounding Louisiana's underfunded plan for preserving and restoring wetlands and protecting some residents from flooding.
1:55pm	<b>Bo Wang</b> Louisiana State University  Modeling Channel Bed Deformation Downstream of the Mississippi-Atchafalaya River Diversion		<b>John Lopez</b> Lake Pontchartrain Basin Foundation  A General Framework for Analyzing Relative Sea Level Rise and Subsidence in Coastal Louisiana	
2:15pm	<b>T. Mitchell Andrus</b> Royal Engineers and Consultants  The Long-Term Outlook of the Mississippi-Atchafalaya Bifurcation		<b>Paul Heinrich</b> Louisiana Geological Survey  Late Holocene Subsidence of Pierre Part Distributary Complex over the Napoleonville Salt Dome, Ascension and Assumption Parishes, Louisiana	
2:35pm	<b>Giancarlo Restrepo</b> Louisiana State University  Using 7-Beryllium To Calculate Fluvial Sediment Deposition Rate In A Distal Bay And Associated Wetlands In Fourleague Bay, Louisiana		<b>Nancye Dawers</b> Tulane University  Improving our Understanding of Faults and Salt Dome Interactions in Southeastern Louisiana's Subsurface	
2:55	Discussion	Discussion	Discussion	Discussion
3:00	<b>Break with Afternoon Refreshments</b> <i>[Exhibit Hall]</i>			

# Wednesday, May 30, 2018 - Conference Schedule

Concurrent Sessions – III [3:30pm - 5:00pm]					
	Room 205	Room 206	Room 207	Room 208	Room 209
	Session 19	Session 20	Session 21	Session 22	Session 23
Session Title	Research and Response into the Die-back of Roseau Cane and Infestation by the Scale Insect <i>Nipponaclerda biwakoensis</i> in Southern Louisiana	Putting Public-Private Partnerships to Practice to Support the Working Coast	Rockefeller Wildlife Refuge: Management in an Ever-Changing Environment in SW Louisiana	Building Support for Coastal Restoration in Louisiana Through Volunteerism	Performance and Assessment of Coastal Flood Structures
Moderator	James Pahl CPRA	Justin Ehrenwerth Water Institute of the Gulf	Wesley Jacobs HDR Engineering, Inc.	Alma Robichaux Barataria-Terrebonne National Estuary Program	John Monzon Southeast Levee Protection Authority West
3:30	Introduction & Overview	Introduction & Overview	Introduction & Overview	Introduction & Overview	Introduction & Overview
3:35pm	<b>Madeline Gill</b> LSU AgCenter  Overview of the Recently Recognized Dieback of Roseau Cane ( <i>Phragmites Australis</i> ) in Coastal Louisiana	<b>PANELISTS:</b> <b>Joni Tuck</b> Greater Lafourche Port Commission <b>Edwin Pinero</b> US Business Council for Sustainable Development <b>Scott Hemmerling</b> Water Institute of the Gulf <b>Leah Brown</b> Chevron  A web of coastal infrastructure supports major industries. We present examples where public-private partnerships protect critical infrastructure and provide ecosystem services for community resilience.	<b>Beau Tate</b> Royal Engineers and Consultants, LLC  Introduction to Rockefeller Refuge and Corresponding Levee Repairs	<b>James Stram</b> Common Ground Relief  Volunteer and Community Involvement in Restoration Efforts	<b>Jessica Watts</b> CDM Smith  Harahan Drainage Pump Station to The Mississippi River Project: Opportunities and Challenges
3:55pm	<b>Ian Knight</b> LSU AgCenter  Susceptibility of Roseau Cane ( <i>Phragmites australis</i> ) and Select Agronomically and Environmentally Significant Potential Hosts		<b>Mike Carlross</b> Ducks Unlimited  Recent Restoration and Enhancement Projects at Rockefeller Refuge with DU/LDWF Partnership	<b>Kacie Wright</b> CRCL  A Functional Approach in Identifying Motivations of Coastal Restoration Volunteers in Louisiana	<b>Steven Underwood</b> Neel-Schaffer, Inc.  Natural Templates for Coastal Resiliency and Storm Protection: Cameron County Texas, Erosion Response Plan
4:15pm	<b>Blake Wilson</b> LSU AgCenter  Examination Of Chemical Control Options for the Invasive Roseau Cane Scale, <i>Nipponaclerda Biwakoensis</i>		<b>Erin Rooney</b> HDR Engineering, Inc.  Banking on Marsh Creation at the Refuge	<b>Duyen Lam</b> Volunteer LSU  Connecting the Youth to Coastal Restoration	<b>Melissa Kennedy</b> HNTB Corporation  Stuck Between a Levee and Soft Place - Meeting USACE & FEMA Requirements in Jesuit Bend Polder, Plaquemines Parish
4:35pm	<b>Linda Hooper-Bui</b> Louisiana State University  Roseau Cane Mortality in South Louisiana: What We Know and a Plan for the Future		<b>Dion Broussard</b> CPRA  Gulf Shoreline Stabilization in a Highly Erosive Environment	<b>Robert Thomas</b> Loyola University New Orleans  Louisiana Master Naturalist: The Many Ways to Make Saving the Coast a Personal Imperative	<b>Jack Cardigan</b> Louisiana State University  Performance of Levees During River Floods and Rainfall Events
4:55	Discussion	Discussion	Discussion	Discussion	Discussion
5:00	<b>Welcome Reception</b> [Exhibit Hall]				

Concurrent Sessions – III [3:30pm - 5:00pm]				
	Room 210	Room 211-212	Room 213	Rivergate Room (First Floor)
	Session 24	Session 25	Session 26	Session 27
Session Title	Implementation Progress of the System Wide Assessment and Monitoring Program (SWAMP)	Public Access, Private Property and the Legislature's Attempt to Find a Solution	Using Offshore Sand for Barrier Island Restoration	<i>Diversions Keepers of the Mounds Born on the Bayou</i>
Moderator	Richard Raynie CPRA	Beaux Jones Baldwin Haspel Burke & Mayer	Bridgette Duplantis Bureau of Ocean Energy Management	
3:30	Introduction & Overview	Introduction & Overview	Introduction & Overview	Introduction & Overview
3:35pm	Syed Khalil CPRA  Updates on the Development and Implementation Timelines of SWAMP	<b>PANELISTS:</b> <b>Capt. Daryl Carpenter</b> Louisiana Charter Boat Assoc. <b>Taylor Darden</b> Louisiana Landowners Assoc. <b>Harry Vorhoff</b> Louisiana Dept. of Justice <b>Jim Wilkins</b> Louisiana Sea Grant  This panel will focus on H.R. 178, which gave Louisiana Sea Grant the task of exploring solutions to the fight that has been brewing for years in Louisiana's coastal marshes between anglers, private landowners and the State over recreational public access to waterways.	Michael Miner Bureau of Ocean Energy Management  Gulfwide Sand Inventory: Identifying Offshore Sediment Resources to Inform Pipeline Decommissioning and Long-Term Restoration Planning	<b>Diversions (22m)</b> <b>John Richie, Director (2107)</b>  The state's Coastal Master Plan focuses on sediment diversions as the strongest option for restoring lost coastal marshlands. Yet the diversions threaten to destroy oyster beds, an integral part of the state's economy and way of life. For Louisiana's already battered oystermen, the solution is a curse.  <b>Keepers of the Mounds (22m)</b> <b>Katie Mathews, Director (2017)</b>  The Solet family, members of the United Houma Nation, face the potential loss of sacred mounds that are central to native practices. Along with organizers and scientists working on marsh creation, they fight to raise the voices of a community threatened by coastal land loss.  <b>Born on the Bayou (22m)</b> <b>Kevin McCaffrey, Director (2017)</b>  Bayou Lafourche is sometimes described as the nation's longest main street, passing through the romantic towns of Thibodaux, Donaldsonville, Cut Off, Leeville and on down to Grand Isle. This diverse, complex waterway is the responsibility of Windell Curole, a unique character who's charged with getting funds for this endangered landscape.
3:55pm	Jeffrey Andrews APTIM  Recent Geophysical Surveys in Hydrologic Basins east and west of the Mississippi River		Kehui Xu Coastal Studies Institute, Louisiana State University  Sediment Transport and Infilling Process of Dredge Pits on Louisiana Shelf	
4:15pm	Brian Perez Jacobs  Continuous and Discrete Water Quality in Basins East and West of the Mississippi River		Rex Caffey Louisiana State University  Economic and Geomorphic Comparison of OCS Sand vs. Nearshore Sand for Coastal Restoration Projects	
4:35pm	Bernard Wood CPRA  Identifying the Relationships Among Forested and Herbaceous Floristic Quality Indices, and Biomass in Louisiana Swamps		Lora Turner Bureau of Ocean Energy Management  Marine Minerals Information System Update	
4:55	Discussion	Discussion	Discussion	Discussion
5:00	Welcome Reception [Exhibit Hall]			

# Thursday, May 31, 2018 - Conference Schedule

Concurrent Sessions – IV [8:30am - 10:00am]					
	Room 205	Room 206	Room 207	Room 208	Room 209
	Session 28	Session 29	Session 30	Session 31	Session 32
Session Title	Avian Response to Restoration Activities	Implementing Master Plan Marsh Creation Projects	Backfilling Canals: Progress and Pratfalls	Building Partnerships for Coastal Resilience	Comprehensive Community Resilience: From Planning to Action
Moderator	Jessica Henkel Restore Council	Russ Joffrion CPRA	Giovanna McClenachan University of Central Florida/CRCL	Mark Wingate US Army Corps of Engineers	Steve Mathies Stantec
8:30	Introduction & Overview	Introduction & Overview	Introduction & Overview	Introduction & Overview	Introduction & Overview
8:35 AM	Erik Johnson Audubon Louisiana/National Audubon Society  Responses to Beach Renourishment By Nesting Shorebirds in Coastal Louisiana	<b>PANELISTS:</b> <b>Chuck Broussard</b> Weeks Marine, Inc. Dredging Division <b>Navid H. Jafari</b> LSU Dept. of Civil and Environmental Engineering <b>Jas Singh</b> CPRA <b>Rudy Simoneaux</b> CPRA  The panel session will discuss the challenges and expertise gained from the in-house design and construction of marsh creation projects, the experience gained from partnerships with construction contractors, and the research collaboration with local universities to aid in the development of efficient design and construction methodologies for the implementation of master plan marsh creation projects.	R. Eugene Turner Louisiana State University  Canals: Most Louisiana Landloss is caused by Canals and Restoring Canals is Successful	Andrea Galinski CPRA  CPRA's Flood Risk and Resilience Program	Priya Dey-Sarkar Sewerage and Water Board of New Orleans  City of New Orleans Strategic Pathways - Resilience
8:55 AM	Michael Seymour Louisiana Department of Wildlife and Fisheries  Statewide Passive Detection for Organismal Research VHF Network		Julie Whitbeck Jean Lafitte National Historical Park & Preserve  What are the Ecological Consequences of Backfilling Canals? Developing Monitoring Designs that Scale Across Time, Space and Levels of Biological and Hydrologic Organization	Simone Maloz Restore or Retreat  NGO's Role to Advance Outreach and Engagement Across the Coast	Michael Moriarty FEMA Region II Mitigation Division  Building Community Resilience Capacity in New Jersey
9:15 AM	Brock Geary Tulane University  Individual Variation in Brown Pelican ( <i>Pelecanus Occidentalis</i> ) Foraging Behaviors in The Gulf of Mexico		Giovanna McClenachan University of Central Florida/CRCL  Why Isn't Everyone Backfilling? History of Rationales for the Lack of Backfilling	Tugce Sahan Purdue University  Digital Tools to Promote Nonstructural Mitigation	Elizabeth Skree Environmental Defense Fund  Building Coastal Support through Innovative Communications and Marketing Strategies
9:35 AM	Katie Percy Audubon Louisiana  A Migratory Songbird Connects Forested Wetlands across Continents		Dusty Pate National Park Service  Quantifying and Prioritizing Opportunities for Canal Backfilling in Louisiana	Michelle Gonzales Jefferson Parish  Advances to Flood Risk Mitigation in Jefferson Parish	Bruce Mowry City of Miami Beach  How Sea Level Rise is Challenging and Changing Miami Beach
9:55	Discussion	Discussion	Discussion	Discussion	Discussion
10:00	Break with Morning Refreshments [Exhibit Hall]				



Concurrent Sessions – IV [8:30am - 10:00am]				
	Room 210	Room 211-212	Room 213	Rivergate Room (First Floor)
	Session 33	Session 34	Session 35	Session 36
Session Title	Utilizing Mississippi River Water and Sediment Resources - from Analysis to Implementation	Strategies for Cultivating Social and Economic Justice in Coastal Restoration Planning	Adaptive Management Highlights from Louisiana CPRA	<i>Finding Common Ground</i>
Moderator	Tonja Koob GAEA Consultants, LLC	Josh Lewis ByWater Institute, Tulane University	Richard Raynie CPRA	
8:30	Introduction & Overview	Introduction & Overview	Introduction & Overview	Introduction & Overview
8:35 AM	Alex McCorquodale University of New Orleans  Mississippi Sediment Research and Long River Model (Delft 3D)	<b>PANELISTS:</b> <b>Colette Pinchon Battle</b> Gulf Coast Center for Law & Policy <b>Dakota Fisher</b> Louisiana Office of Community Development <b>Cory Sparks</b> Commission on Stewardship of the Environment for the LA Interchurch Conference <b>Mike Pasquier</b> Louisiana State University <b>Christine Verdin</b> Pointe-au-Chien Indian Tribe  Panelists will discuss how social, economic, and climate justice concerns can begin to occupy the center of state and local level coastal planning efforts. The aim is to create a series of recommendations built on the experiences of panelists - tribal leaders, religious leaders, scholars, state planners, and lawyers - that examine how coastal planning can reflect the values and struggles of diverse coastal publics as the CPRA begins to move forward with the next coastal Master Plan.	Richard Raynie CPRA  Overview of CPRA's Adaptive Management Program	<b><i>Finding Common Ground (90m)</i></b> <b>Bob Thomas, Kevin McCaffrey</b> , Executive Producers (2017)  Uses documentary film techniques to show how all those impacted by coastal erosion can cross over out of their silos, overcome long term psychological barriers, and achieve new understanding that may fast track restoration projects to build much needed new ground.
8:55 AM	Nina Reins University of New Orleans  Short River Model (Delft 3D) and Diversion Analysis		Morgan Crutcher CPRA  Implementing Processes to Institutionalize Project Level Stakeholder Engagement and Outreach	
9:15 AM	Dan Grandal Stantec Consulting Services, Inc  Bayou Lafourche Fresh Water Diversion – Preliminary Design		Mark Mouledous CPRA  Mermentau Basin Analysis Report	
9:35 AM	Rob Nairn Baird & Associates  3D Modeling Assessment of Intake Alternatives on the Lower Mississippi River at Bayou Lafourche		Angelina Freeman CPRA  Applied Research Initiatives	
9:55	Discussion	Discussion	Discussion	Discussion
10:00	Break with Morning Refreshments <i>[Exhibit Hall]</i>			



# STATE OF

EXCLUSIVE

WALTON FAMILY  
FOUNDATION

RESTORE  
THE MISSISSIPPI RIVER DELTA

  
moffatt & nichol

est. 1914  
BALDWIN  
HASPEL  
BURKE  
& MAYER LLC  
LAW OFFICES

 Stantec

JACOBS<sup>®</sup>  
ch2m<sup>®</sup>



 Foundation  
for Louisiana  
At work for resilient communities



  
DUCKS  
UNLIMITED

ConocoPhillips

  
APTIM

 QUALITY FIRST MARINE  
Construction & Vessel Support

 ARCADIS | Design & Consultancy  
for natural and built assets

# THE COAST

---

## DIAMOND

---



---

## PLATINUM

---



---

## GOLD

---



---

## SILVER

---

Atkins • BTNEP • CDMSmith • Coastal Environments Inc. • Great Lakes Dredge & Dock Company  
Louisiana Shoreline Solutions, LLC • The Mosaic Company • Mott MacDonald • Neel-Schaffer, Inc.  
Ocean Surveys, Inc. • Stanley Consultants • Wood Environment & Infrastructure Solutions

---

## BRONZE

---

Coastal Engineering Consultants • Royal Engineers & Consultants LLC  
CSRS • Manchac Consulting Group, Inc.

# Thursday, May 31, 2018 - Conference Schedule

Concurrent Session – V [10:30am - 12:00noon]					
	Room 205	Room 206	Room 207	Room 208	Room 209
	Session 37	Session 38	Session 39	Session 40	Session 41
Session Title	Evaluating Ecological Relationships and Responses in Louisiana's Estuaries	Restoration of Louisiana's Barrier Shorelines: Application of Soft and Hard Coastal Protection Approaches	Alternate Shoreline Protections	Working Together for our Working Coast	Assessing and Enhancing Community Resilience
Moderator	Shaye Sable Dynamic Solutions, LLC	Glenn Ledet CPRA	Tye Fitzgerald CPRA	Chip Kline Governor's Office of Coastal Activities	Matthew Bilske Louisiana State University
10:30	Introduction & Overview	Introduction & Overview	Introduction & Overview	Introduction & Overview	Introduction & Overview
10:35am	<b>Malinda Sutor</b> Louisiana State University  Plankton Composition and Distribution in Breton and Barataria Basins and Implications for Food Web Models	<b>PANELISTS:</b> <b>Mark Byrnes</b> Applied Coastal Research and Engineering <b>Tom Campbell</b> Coastal Planning and Engineering (Ret.) <b>Josh Carter</b> Mott MacDonald <b>Michael Poff</b> Coastal Engineering Consultants, Inc.  This panel will serve as a platform for coastal engineers, scientists and geologists to discuss the use and application of both soft and hard coastal protection methods on Louisiana's barrier shoreline. This discussion will include past use and associated lessons learned, potential future uses, and the required engineering and geological analyses to be performed prior to implementation of soft and hard structural protection measures.	<b>Charlotte Randolph</b> Louisiana Shoreline Solutions  Non-Rock Alternatives to Shoreline Protection	<b>Ian Voparil</b> Shell  Oil and Gas as a Stakeholder in Louisiana's Future	<b>Brittany M. Bernik</b> Gulf Coast Ecosystem Restoration  Community Resilience and Ecosystem Services: From Evidence to Application
10:55am	<b>James Nelson</b> University of Louisiana at Lafayette  Resource Use and Condition of White Shrimp, <i>Litopenaeus setiferus</i> , in a Rapidly Changing Ecosystem		<b>Brian Caufield</b> CDM Smith  Design Considerations for Rock Sills in Living Shorelines	<b>Chett Chiasson</b> Greater Lafourche Port Commission  Future-Proofing America's Energy Infrastructure Through Holistic Resiliency	<b>Jeffrey Carney</b> LSU Coastal Sustainability Studio  Inland from the Coast: A Multi-Scalar Approach to Regional Climate Change Responses
11:15am	<b>W. Ryan James</b> University of Louisiana at Lafayette  Measuring Food Web Response to Habitat Restoration in Various Coastal Ecosystems		<b>Christa Russell</b> CRCL  It's Alive – Assessing the Restoration Success of a Recycled Oyster Shell Living Shoreline in Biloxi Marsh	<b>Spencer Murphy</b> Canal Barge Company, Inc.  Navigating Shifting Environmental Scenarios	<b>Craig Colten</b> Louisiana State University  Adaptive Transitions: The Long-Term Perspective on Humans in Changing Coastal Settings
11:35am	<b>Melissa Baustian</b> Water Institute of the Gulf  The Essential Role of Benthos in Coastal Louisiana Habitats and their Implications for Coastal Restoration		<b>Jason Chauvin</b> T. Baker Smith  Wave Attenuation by Constructed Oyster Reef Breakwaters	<b>Michael Hecht</b> Greater New Orleans, Inc.  Business People Unite in the Fight to Save the Coast	<b>Jamar Melton</b> Episcopal School of Baton Rouge  Collective Resilience: Preparing Communities to Help Themselves in the Wake of a Large Scale Disaster
11:55	Discussion	Discussion	Discussion	Discussion	Discussion
12:00	<b>Luncheon and Keynote Speaker</b> <i>[Dining Hall]</i>				

Concurrent Session – V [10:30am - 12:00noon]				
	Room 210	Room 211-212	Room 213	Rivergate Room (First Floor)
	Session 42	Session 43	Session 44	Session 45
Session Title	Dynamics of Diversion Receiving Basins	Engaging Urban Coastal Communities in Restoration	Creative Approaches to Monitoring the Outputs and Outcomes of Restoration Activities	<i>Out Da Bayou</i>
Moderator	Kehui Xu Louisiana State University	Amanda Moore National Wildlife Foundation	Natalie Peyronnin Environmental Defense Fund	
10:30	Introduction & Overview	Introduction & Overview	Introduction & Overview	Introduction & Overview
10:35am	<b>Samuel Bentley</b> Louisiana State University  What Sediment and Flow Properties Control Mud Dispersal and Retention in Coastal Bays and Diversion-receiving Basins?	<b>PANELISTS:</b> <b>Charles Allen</b> City of New Orleans <b>Arthur Johnson</b> Lower 9th Ward Center for Sustainable Engagement and Development <b>Kristi Trail</b> Lake Pontchartrain Basin Foundation <b>Ryan Prewitt</b> Pêche Restaurant  This session will highlight major achievements, best practices, and lessons learned in how we engage communities in the City that often do not see themselves as “coastal,” including framing and non-traditional approaches. Three urban community leaders will discuss coastal messaging, events, field tours, youth outreach, government engagement and the impacts since Katrina. We’ll also look to the future at opportunities for deeper urban engagement in advocacy and the emerging restoration economy. Chef Ryan Prewitt will complement our session with a look at how he uses his visibility and coastal culinary expertise to reach vast audiences in New Orleans and raise awareness about the importance of restoration.	<b>Tim J.B. Carruthers</b> Water Institute of the Gulf  Quantifying Ecosystem Functions of Coastal Habitats in Louisiana to Improve Understanding of Ecosystem Services	<b>Out Da Bayou</b> <b>John Jackson</b> , Host, Director (2018)  “Wading the Islands” (22m) The Barrier Islands, off the Mississippi Coast, are the first line of defense for hurricanes and large storms. They are also the honey hole for game fish such as Redfish, Trout, and other toothy critters. Come along with O.D.B. for the flight of a lifetime as they take you on a one-of-a-kind bucket list trip.  <b>“Protectors of the Bayou”</b> (22m) Oysters, one of the favorite seafoods of Louisiana. But what makes these dining delicacies such an integral part of the coast? Is it a Science? Farming? Restoration? Or a combination of all three? Come along as O.D.B. takes you into the life cycle of Louisiana’s favorite pearl.
10:55am	<b>Molly Keogh</b> Tulane University  Sediment Retention in Diversion-fed Coastal Wetlands: A Field-based Conceptual Model		<b>Melissa Carle</b> NOAA  Monitoring and Adaptive Management Manual to Support Integrated Ecosystem Restoration for the Deepwater Horizon Oil Spill	
11:15am	<b>Soroush Sorourian</b> Louisiana State University  Numerical Modeling of Wave Dynamics and Diversion-Induced Sediment Dispersal in the Barataria Bay		<b>Jenny Wolff</b> CRCL  Restoration Efficacy Assessment of Coastal Louisiana	
11:35am	<b>Hongqing Wang</b> US Geological Survey  Predicting the Impacts of Mississippi River Diversions and Sea-Level Rise on Spatial Patterns of Eastern Oyster Growth Rate and Production		<b>Gerald Songy</b> HDR Engineering Inc.  Using Adaptive Management for Successful Marsh Restoration and Shoreline Protection	
11:55	Discussion	Discussion	Discussion	Discussion
12:00	<b>Luncheon and Keynote Speaker</b> <i>[Dining Hall]</i>			

# Thursday, May 31, 2018 - Conference Schedule

Concurrent Session – VI [1:30pm - 3:00pm]					
	Room 205	Room 206	Room 207	Room 208	Room 209
	Session 46	Session 47	Session 48	Session 49	Session 50
Session Title	<b>Biogeochemical Processes of Wetlands and Estuaries</b>	<b>Alternative Transport Methods of Dredge Material for Beneficial Use in Wetland Restoration</b>	<b>Updates on Programs and Projects in Louisiana's Coastal Basins</b>	<b>The Cooperative Engagement of the Oil and Gas Industry in Coastal Sustainability Planning</b>	<b>Resilient and Resolute: Indigenous Strategies in Response to Coastal Erosion and Climate Change Impacts</b>
Moderator	<b>Tracy Quirk</b> Louisiana State University	<b>Darrel Broussard</b> U.S. Army Corps of Engineers-MVN	<b>Ignacio Harrouch</b> CPRA	<b>Sarah Connick</b> Chevron	<b>Tara Lambeth</b> University of New Orleans-CHART
1:30	<b>Introduction &amp; Overview</b>	<b>Introduction &amp; Overview</b>	<b>Introduction &amp; Overview</b>	<b>Introduction &amp; Overview</b>	<b>Introduction &amp; Overview</b>
1:35pm	<b>Jeremy Reiman</b> Louisiana State University  Floodplain Influence On Carbon Transport In The Atchafalaya River Basin	<b>PANELISTS:</b> <b>Chuck Broussard</b> Weeks Marine <b>Brent Duet</b> Coastal Engineering Solutions, LLC <b>Brad Miller</b> CPRA <b>Ancil Taylor</b> Bean Consulting, LLC  This panel will focus on barge transport of dredge material over conventional direct pipeline for wetland restoration projects. The panel will discuss the barge transport operation (dredge, spider barge, hopper barge, offloader), costs associated with barge transport in comparison to direct pipeline, feasibility of barge transport, and applications where barge transport should be considered over direct pipeline.	<b>John Troutman</b> CPRA  Overview of Coastal Protection and Restoration in the Pontchartrain and Breton Basins, Louisiana	<b>Phil Precht</b> ConocoPhillips Company  A Review of Wetlands Management Strategies	<b>Laura Kelley</b> Tulane University  Sanctuary in the Swamps: Survival by Strategic Migration, Native American Communities in Southern Louisiana
1:55pm	<b>Charles Schutte</b> Louisiana Universities Marine Consortium  Long-Term Impact of Oiling On Salt Marsh Nitrogen Cycling Processes		<b>Daniel Dearmond</b> CPRA  Overview of Coastal Protection and Restoration in the Barataria and Terrebonne Basins, Louisiana	<b>Donnie Garrison</b> Shell Pipeline Company  Shell Pipeline uses Natural Infrastructure Solutions to Protect Ship Shoal Pipeline and Improve Nearby Coastal Ecosystem	<b>Matthew Bethel</b> Louisiana Sea Grant  Enhancing Local Hazard Mitigation Planning with Traditional Ecological Knowledge in a Participatory Mapping Approach
2:15pm	<b>Robert Miller</b> University of Louisiana  Hypoxia and Water Temperature Dynamics in Low-Gradient Partly Regulated Systems – A Case Study in the Teche-Vermilion Watershed.		<b>Glenn Ledet</b> CPRA  Overview of Coastal Protection and Restoration in the Atchafalaya and Teche/Vermilion Basins, Louisiana	<b>Jarrett Levesh</b> University of New Orleans  Middle Miocene through Present Fault History of the Delacroix Island Fault System	<b>Albert Naquin</b> Chief, Isle de Jean Charles Band of Biloxi Chitimacha Choctaw Indians  The Isle de Jean Charles Resettlement Project – An Adaptation Plan to Maintain Cultural Heritage and Strengthen Community Resilience
2:35pm	<b>Donald Schoolmaster Jr</b> US Geological Survey  Using Monitoring Network Structure to Inform Multiple Lines of Evidence toward Causal Assessment of Restoration Efficacy: A Proof of Concept		<b>Darrell Pontiff</b> CPRA  Overview of Coastal Protection and Restoration in the Mermentau and Calcasieu/Sabine Basins, Louisiana	<b>Chris McLindon</b> New Orleans Geological Society  Using Oil and Gas Industry Data to Help Assess Levee Integrity	<b>Patty Ferguson-Bohnee</b> Sandra Day O'Connor College of Law  Self Determination in a Sinking Basin - Hurdles and Hindrances to Protecting Tribal Cultural Heritage in Southern Louisiana
2:55	<b>Discussion</b>	<b>Discussion</b>	<b>Discussion</b>	<b>Discussion</b>	<b>Discussion</b>
3:00	<b>Break with Afternoon Refreshments</b> <i>[Exhibit Hall]</i>				

Concurrent Session – VI [1:30pm - 3:00pm]				
	Room 210	Room 211-212	Room 213	Rivergate Room (First Floor)
	Session 51	Session 52	Session 53	Session 54
Session Title	Innovation and Evaluation of Deltaic Ecosystems	Post Disaster Long Term Recovery: Critical Considerations for Creating Resilient Communities	Forecast and Assessment Tools: A Way to Monitor and Manage our Coast	Island in Crisis Buried a Sea Disparaître-Disappearing
Moderator	Elizabeth Jarrell CPRA	Robin Keegan Resilient Baton Rouge	Amanda Taylor CPRA	Moderator TBD
1:30	Introduction & Overview	Introduction & Overview	Introduction & Overview	Introduction & Overview
1:35pm	<b>Kim de Mutsert</b> George Mason University  Using Ecosystem Modeling to Evaluate Trade-Offs In Coastal Management: Effects of Large-Scale River Diversions on Fish and Fisheries	<b>PANELISTS:</b> <b>Renia Ehrenfeucht</b> University of New Mexico <b>John Marshall</b> Georgia State University College of Law <b>Andrew Rumbach</b> University of Colorado Denver  This panel will focus on the current status of disaster recovery and lessons learned from communities around the country and internationally. Disasters represent a turning point for communities. After coping with immediate impacts, cities and towns are forced to confront vulnerabilities and make choices about how to spend resources. Data and anecdotes are alternatively inspiring and confounding. Drawing examples from Colorado, Louisiana, New Jersey, New York, India and Nepal, panelists will examine advances and oversights in post-disaster housing and infrastructure redevelopment, community planning, and social service delivery.	<b>Shu Gao</b> Louisiana State University  Hydrologic Simulation and Assessment of Remote Sensing Products of the 2016 Louisiana Flood In the Amite River Basin	<b>Ted Jackson, Director (2016), (2018)</b>  <i>"Island in Crisis"</i> (4m) is a film about the disappearance of the Leeville Cemeteries, which have been swallowed up beneath the waters of Bayou Lafourche. It features 90-year-old Velma Lefort Ellender, who's grandfather donated the land for the original cemetery plot in 1905. It also features Leeville resident Talbot Serigny, who grew up across the bayou. (2016)  <i>"Buried a Sea"</i> (4m) is an environmentally-focused film featuring the Native American community of Isle de Jean Charles, who is faced with the emotional decision to relocate from their disappearing ancestral homeland to higher ground. (2018)  <b>Bill Rodman, Director (2017)</b>  <i>"Disparaître-Disappearing"</i> (13m) is a film about Lucas Bissett and his ABLE (Anglers Bettering Louisiana's Estuaries) conservation efforts to help save the Louisiana coast. It is an official selection of the ""2018 Orvis - Down the Hatch"" fly fishing film tour. ""Disparaître" is French for disappearing. (2017)
1:55pm	<b>Ken W. Krauss</b> US Geological Survey  Evaluating Future Success of a Freshwater River Re-Introduction to the Floodplain Forests of Maurepas Swamp, Louisiana		<b>Brennon Dardar</b> Nicholls State University  Evaluation of Small Unmanned Aerial Systems (sUAS) as a Levee Monitoring Tool	
2:15pm	<b>Randall Bushey</b> Jacobs  Adaptive Design and Operational Management for Natural System Designs		<b>Craig Conzelmann</b> US Geological Survey  Supporting Coastal Outreach with the Coastal Information Management System (CIMS)	
2:35pm	<b>Robert R. Twilley</b> Louisiana State University  Ecosystem Design: Process-Based Approaches to Operating Controlled Floods for Delta Restoration		<b>Denise E. DeLorme</b> Louisiana State University  'What Could Possibly Happen?': Coastal Decision Makers' Perspectives On Storm Surge Forecasting Tools	
2:55	Discussion	Discussion	Discussion	Discussion
3:00	<b>Break with Afternoon Refreshments</b> [Exhibit Hall]			

# Thursday, May 31, 2018 - Conference Schedule

Concurrent Session – VII [3:30pm - 5:00pm]					
	Room 205	Room 206	Room 207	Room 208	Room 209
	Session 55	Session 56	Session 57	Session 58	Session 59
Session Title	Understanding the Ecological Function of Restored Marshes	Extraction Related Subsidence and the Potential for Uplift	Sediment Delivery Challenges Across Coastal Louisiana	A Place at the Table for the Private Sector in Coastal Protection and Restoration	Natural System and Human Response to Interior Hydrologic Restoration and Modification
Moderator	Melissa Carle NOAA	Joel Waltzer Waltzer Wiygul and Garside	Greg Grandy Coastal Engineering Consultants, Inc.	Emily Vuxton CRCL	John Lopez Lake Pontchartrain Basin Foundation
3:30	Introduction & Overview	Introduction & Overview	Introduction & Overview	Introduction & Overview	Introduction & Overview
3:35pm	Diana Lane Abt Associates  Using Meta-Analysis to Understand Recovery of Vegetation and Soils in Restored Wetlands in the Northern Gulf Of Mexico	<b>PANELISTS:</b> <b>Alex Kolker</b> Louisiana Universities Marine Consortium <b>Pietro Teatini</b> University of Paduva <b>J. A. de Waal</b> Ministry of Economic Affairs and Climate Policy, The Hague <b>Julie Bernier</b> USGS  This panel will discuss the various causes of subsidence in South Louisiana and what can be done about it. They'll speak to the most preventable form of subsidence, related to the history and mechanics of extraction related subsidence, and the quantitative and qualitative impact this anthropogenic phenomenon has had on coastal Louisiana; adaptation of these same mechanical principals in an effort to stem or reverse subsidence, by inducing seawater into aquifers beneath environmentally valuable areas; and how other countries such as the Netherlands have adopted a risk-based management approach to prevent extraction related subsidence in their own critically sensitive coastal areas.	Nicholas Cox Moffatt & Nichol  Phased Implementation of Programmatic Marsh Creation Projects	Deborah Visco Abibou CRCL  The Business of Recycling Oyster Shell in Louisiana	Theryn Henkel Lake Pontchartrain Basin Foundation  Basin-Wide Changes Post-Closure of the Mississippi River Gulf Outlet (MRGO) Leading to Potential Natural Swamp Regeneration on the Maurepas Land Bridge, SE LA
3:55pm	Glen Curole CPRA  Assessing the Western Caminada-Moreau Headland's Shoreline, Elevational, Vegetative, and Avian Response to Beach, Dune, and Marsh Creation		Brett McMann Arcadis U.S. Inc.  Spanish Pass Beneficial Use of Mississippi River Navigation Dredged Material	Lizzie Garcia Tulane University Law School  "The Pinker the Belly, the Better the System": How Aquaculture and Restoration Legally Fit Together in Louisiana's Wetlands	Sharon Osowski Morgan EPA Region 6  Restoring the Swamp: Hydrologic Restoration and Vegetative Planting in the Des Allemands Swamp
4:15pm	John Andrew Nyman School of Renewable Natural Resources  Created Marshes Support Fewer Fish and Crustaceans than Natural Marshes.		Adrian Chavarria EPA Region 6  Restoring the Caminada Headlands: An Effective and Synergistic Approach	John Supan Louisiana Sea Grant College Program (Ret.)  Marine Enterprise Zones for Coastal Community Development	Sinéad Borchert US Geological Survey (Contractor)  Coastal Wetland Migration with Sea-Level Rise: Quantifying the Potential for Landward Movement and Coastal Squeeze in Northern Gulf of Mexico Estuaries
4:35pm	Terill A. Hollweg Abt Associates  Meta-Analysis of Nekton Recovery Following Marsh Restoration in the Northern Gulf Of Mexico		Patricia A. Taylor EPA Region 6  Last Island Restoration: Reflecting On 20 Years and Looking Into the Future	Michael Donahue AECOM  Introducing the Natural Infrastructure Initiative: Solutions for Coastal Protection and Restoration	Michael Hrzic HNTB East Ascension Parish Floodplain Management - A System Wide Approach
4:55	Discussion	DISCUSSION	Discussion	Discussion	Discussion
5:00	Happy Hour Poster Session [Exhibit Hall]				



Concurrent Session – VII [3:30pm - 5:00pm]				
	Room 210	Room 211-212	Room 213	Rivergate Room (First Floor)
	Session 60	Session 61	Session 62	Session 63
Session Title	The River's Role in Coastal Restoration	Long-term Strategic Planning and Adaptation from Local to International Perspectives	Unmanned Aircraft Systems and Satellite Applications for Coastal Protection and Restoration	<i>Locked</i>
Moderator	Cyndhia Ramatchandirane Water Institute of the Gulf	Jeff Hebert Water Institute of the Gulf	Whitney Broussard JESCO Environmental, Inc.	
3:30	Introduction & Overview	Introduction & Overview	Introduction & Overview	Introduction & Overview
3:35pm	Natalie Peyronnin Environmental Defense Fund  Advancing Sediment Diversion Operations Discussions: Testing Recommendations of an Expert Working Group	Claire Connolly Knox University of Central Florida  Are We All on the Same Team? Analysis of Louisiana's Coastal Master Plan and Local Government Plans	Glenn Suir US Army Corps of Engineers, ERDC  Monitoring Coastal Wetland Vegetation Using High-Resolution Satellite Imagery	<b><i>Locked (13m)</i></b> <b>Daneeta and Patrick Jackson</b>  Tells the hundred-year history of the Industrial Canal System and Lock, which dissects the infamous 9th Ward in New Orleans. Local Urban Ecologist Dr. Josh Lewis describes the wide-reaching effects of how we do water transportation in Louisiana and how irresponsible urban planning around water transportation has led to repeated catastrophic flooding in the region since 1927.
3:55pm	Christopher Esposito Water Institute of the Gulf  River Bar Dynamics Drive Sand Discharge through Diversions	Laura Mansfield National Academy of Sciences  Oil and Gas: Future Outlooks on Effective Governance of The Outer Continental Shelf	Whitney Broussard JESCO Environmental, Inc.  An Object-Based Approach to Classifying Urban and Wetland Vegetation Cover Using Hyperspatial, Multispectral UAS Imagery	
4:15pm	Brendan Yuill Water Institute of the Gulf  Sand Settling Through Borrow-Pit Generated Turbulence in Rivers	Adam Hosking Jacobs  Applying Adaptation Pathways and Robust Decision Making in Strategic Coastal Planning in the Face of Change and Uncertainty	Balaji Ramachandran Nicholls State University  Levee Monitoring and Estuary Assessment Using Small Unmanned Aircraft Systems (sUAS)	
4:35pm	G. Paul Kemp G. Paul Kemp & Associates  Thinking Out of the Box: Increasing Mud Supply to the Mississippi River Delta	Denise Reed University of New Orleans  Thinking Beyond Year 50: Strategies for the Longer Term	Chad Netto Chustz Surveying, LLC  Small Unmanned Aircraft Systems and LiDAR Integration to Map Remote Areas	
4:55	Discussion	Discussion	Discussion	Discussion
5:00	Happy Hour Poster Session <i>[Exhibit Hall]</i>			

# Friday, June 1, 2018 - Conference Schedule

Concurrent Sessions – VIII [9:00am - 10:30am]					
	Room 205	Room 206	Room 207	Room 208	Room 209
	Session 64	Session 65	Session 66	Session 67	Session 68
Session Title	Barrier Island Dynamics	Communicating the Coast: Challenges and Opportunities in Advancing a Coastal Narrative	Restoration Project Performance by Project Type	Vanishing by the Minute: What Land-loss and Development Mean for Louisiana's Cultural Heritage	A Coastal Perspective on Floodplain Management and Coastal Resiliency
Moderator	Jonathan Willis Nicholls State University	Jacques Hebert Audubon, Restore the Mississippi River Delta Coalition	Robert Routon CPRA	Jayur Mehta University of Illinois Urbana-Champaign	Shannon Cunniff Environmental Defense Fund
9:00	Introduction & Overview	Introduction & Overview	Introduction & Overview	Introduction & Overview	Introduction & Overview
9:05am	Gregory Grandy Coastal Engineering Consultants  Breton Island Restoration Evolution Modeling (BIREM)	<b>PANELISTS:</b> <b>Brian Boyles</b> Louisiana Endowment for the Humanities/Cultural Vistas Magazine <b>Chuck Perrodin</b> CPRA <b>Mark Schleifstein</b> Times Picayune <b>Amy Wold</b> Water Institute of the Gulf  This panel will discuss challenges and opportunities in covering coastal Louisiana, and answer questions such as, what are the big gaps in coverage? How can stories be told more comprehensively? What has the national media gotten right about coastal Louisiana and what might be unfair or imprecise characterizations? How can people on the ground – from communications experts to scientists to citizens to policymakers – do a better job elevating stories that matter to journalists?	Darin Lee CPRA  Lessons Learned from Two Decades of Barrier Island Restoration in Louisiana	Brian Ostahowski Louisiana Archaeological Society  Coastal Land Loss and the Future of Louisiana's Archaeological Record	Pat Forbes Office of Community Development  Development of a Statewide Watershed Based Floodplain Management Program
9:25am	Victoria Curto Mott MacDonald  Hot Spot Erosion on Grand Isle, LA – Identification and Causes		Amanda Taylor CPRA  Marsh Creation Design Criteria and Project Performance	Richard Weinstein Coastal Environments, Inc.  The Effects of Shoreline Erosion at Sites 16SB47 and 16SB153, St. Bernard Parish, Louisiana	Jennifer Argote Louisiana State University  Prepare to Prevent – Reducing Flood Losses with the NFIP and Community Rating System
9:45am	Benjamin Beasley University of New Orleans  Shoreface Sediment Budget Influence on Barrier Island Evolution, Louisiana, USA		Erin Plitsch CPRA  Lessons Learned From Existing Mississippi River Diversions	J. Ryan Kennedy Tulane University  Environmental Change and Coastal Resources: Perspectives from Colonial New Orleans	Christopher Siverd Louisiana State University  Analysis of the Historical Change in Storm Surge across Coastal Louisiana via Land to Water Isopleths
10:05am	Shamim Murshid Louisiana State University  Morphodynamics of Barrier-Inlet System: The Battle between Waves and Tide		Tommy McGinnis CPRA  Lessons Learned from Shoreline Protection Demonstration Projects in Southwest Louisiana	Theresa Dardar Pointe-au-Chien Indian Tribe  Pointe-au-Chien's Efforts to Protect Culture, Lifeways, and Sacred Sites	Alex Kolker Louisiana Universities Marine Consortium  A Quintupling in the Prevalence of Coastal Floods in the Southern Terrebonne Basin: Climate Change, Subsidence or Coastal Construction?
10:25	Discussion	Discussion	Discussion	Discussion	Discussion
10:30	Break with Morning Refreshments & Student Awards [Exhibit Hall]				

Concurrent Sessions – VIII [9:00am - 10:30am]				
	Room 210	Room 211-212	Room 213	Rivergate Room (First Floor)
	Session 69	Session 70	Session 71	Session 72
Session Title	RESTORE Lowermost Mississippi River Management Program (LMRMP)	Alternative Oyster Culture Using Off- bottom Technology in Louisiana and the Gulf of Mexico	RESTORE Act Center of Excellence for Louisiana: Research to Support Louisiana’s Coastal Master Plan	Restoration on the Half Shell: Presentations in Non-Technical Language
Moderator	Jennifer Mouton CPRA	Andrew Wilson Simon, Peragine, Smith & Redfearn, LLP	Melissa Baustian Water Institute of the Gulf	Jimmy Frederick CRCL
9:00	Introduction & Overview	Introduction & Overview	Introduction & Overview	<p>CRCL is proud to partner with the Water Institute of the Gulf and CPRA to offer a this half-day program.</p> <p>Half Shell is an interactive 'mini-conference' experience. The program is tailored to concerned citizens who are familiar with the problems facing our coast but want to learn more. Participants will enjoy two informative, timely, and entertaining sessions, featuring presentations then and a panel and audience discussion.</p> <p><u>Presentations</u></p> <p>A Strategy to Combat Our Land Loss Problems <b>Alisha Renfro</b>, National Wildlife Federation</p> <p>A Master Plan and its Implementation <b>Bren Haase</b>, CPRA</p> <p>Planning for the Next Generation’s Coast and Communities <b>Corey Miller</b>, CRCL</p>
9:05am	<b>Brian Vosburg</b> CPRA  RESTORE Act LMRMP: <i>Background and Overview</i>	<p><u>PANELISTS:</u>  <b>John Supan</b>  Louisiana Sea Grant College Program (Ret.)  <b>Steve Pollock</b>  Triple N Oyster Farm, LLC  <b>Terry Shelley</b>  Shelley Farms Premium Oyster Company, LLC</p> <p>Off-bottom oyster farming has expanded along the U.S coast from Maine to Florida and has now become a commercial reality in the Gulf, including Alabama and Louisiana. This session explores each stage of the business: (1) hatchery (larvae); (2) nursery (spat and seed oysters); (3) oyster farming equipment (cages, bags, longlines); and, (4) actual oyster farms. This technology may allow the industry to adapt and survive the challenges of climate change and planned Mississippi River diversions.</p>	<b>Q. Jim Chen</b> Northeastern University  Integrating High-fidelity Models with New Remote Sensing Techniques to Predict Storm Impacts on Louisiana Coastal and Deltaic Systems	
9:25am	<b>Ehab Meselhe</b> Water Institute of the Gulf  RESTORE Act LMRMP: River Model Applications		<b>Alexandra Christensen</b> Louisiana State University  Multiple Tools for Determining the Fate of Nitrate in a Deltaic Floodplain	
9:45am	<b>Mead Allison</b> Water Institute of the Gulf  RESTORE Act LMRMP: Subsidence Investigations		<b>Scott Hagen</b> Louisiana State University  On Coupling Hydrologic, Tide and Surge Processes	
10:05am	<b>Ty Wamsley</b> USACE-MVD  RESTORE Act LMRMP: <i>Storm Surge Investigations</i>		<b>Emad Habib</b> University of Louisiana at Lafayette  Evaluation of Radar-Based Precipitation Datasets for Applications in the Louisiana Coastal Master Plan	
10:25	Discussion	Discussion	Discussion	
10:30	<b>Break with Morning Refreshments &amp; Student Awards</b> <i>[Exhibit Hall]</i>			

# Friday, June 1, 2018 - Conference Schedule

Concurrent Session – IX [11:00am - 12:30pm]					
	Room 205	Room 206	Room 207	Room 208	Room 209
	Session 73	Session 74	Session 75	Session 76	Session 77
Session Title	Barrier Island Habitats	Implementing Resilience at Four Scales: Opportunities and Challenges in Coastal Louisiana	Lessons Learned from Louisiana Coastal Projects	New Ways of Valuing Restoration	Geological Underpinnings of Coastal Landloss and Subsidence
Moderator	Allyse Ferrara Nicholls State University	Jeff Carney LSU Coastal Sustainability Studio	Joshua Pruett GeoEngineers, Inc.	Charles Sutcliffe Governor's Office of Coastal Activities	David Culpepper The Culpepper Group, LLC
11:00	Introduction & Overview	Introduction & Overview	Introduction & Overview	Introduction & Overview	Introduction & Overview
11:05am	Jonathan Willis Nicholls State University  Utilization of Historic and Recent Monitoring Data to Assess Vegetation Trajectories of Restored Louisiana Barrier Islands	<b>PANELISTS:</b> <b>Colleen McHugh</b> City of New Orleans, Mayors Office of Sustainability & Resilience <b>Traci Birch</b> LSU Coastal Sustainability Studio <b>Mart Black</b> Terrebonne Parish Consolidated Government, Recovery Planning <b>Andrea Galinski</b> CPRA  Reducing vulnerability and increasing resilience are at the forefront of the coastal planning and development conversation. But resilience is context-specific – what it means in New Orleans is different than Terrebonne and Baton Rouge. This panel discussion engages people working at 4 scales - site, neighborhood, community, and region – to discuss resilience implementation and the associated challenges and opportunities.	Brett Geesey HDR Engineering, Inc.  Avoiding the Dreaded Sunken Breakwater: Considerations for Stabilizing Shorelines in Soft Soils	Peter Hall Wood Environment and Infrastructure Solutions  Maximizing the Return on Investment for Coastal Resilience Projects	Akinbobola Akintomide Tulane University  Fault Activity in the Terrebonne Trough, Southeastern Louisiana: Implication for Subsidence Hot-Spots
11:25am	Delaina LeBlanc Barataria-Terrebonne National Estuary Program  Evaluation of Shorebird Nesting Habitat Enhancement Using Hard Substrate (Caminada Headland Restoration Project - Ba-45)		Michael Poff Coastal Engineering Consultants, Inc.  I Don't Have to Outrun the Bear - I Just Need to Outrun Initial Consolidation and Compaction	Sarah Mack Tierra Foundation  Status and Challenges of Wetlands in Carbon Markets	Brian Harris Louisiana State University  Long-term Settlement of the Caminada Headland Beach Nourishment and Dune Restoration in Coastal Louisiana
11:45am	Gary LaFleur, Jr. Nicholls State University  Comparing Protocols for Spatio-Temporal Characterization of Vegetation Using Unmanned Aerial Systems on Trinity Island, LA		Whitney Thompson APTIM  Building Better Islands - Construction Challenges in Coastal Restoration	Taylor Marshall Restore the Earth Foundation  The Importance of Measuring, Valuing and Communicating the Co-Benefits of Coastal Restoration	Michael Hopkins Lake Pontchartrain Basin Foundation  Subsidence Rates from Faulting Determined by Real-Time Kinematic (RTK) Elevation Surveys of Bridges in Lake Pontchartrain
12:05pm	Robert Dobbs US Geological Survey  Distribution and Habitat Use of Piping and Wilson's Plovers in the Caillou Lake Headlands Restoration Project (Te-0100) Area, 2012-2017		Joseph Guillory Duplantis Design Group  Clay Balls in My Soup - Challenges of Constructing Coastal Marsh Using High Plasticity Clay	George Kelly RES  Performance-Based Contracting for Restoration: Benefits and Case Studies	Claudia Zoccarato University of Padova  Modeling Natural Shallow Compaction of Mississippi Wetlands
12:25	Discussion	Discussion	Discussion	Discussion	Discussion
12:30	Conference Concludes				

Concurrent Session – IX [11:00am - 12:30pm]				
	Room 210	Room 211-212	Room 213	Rivergate Room (First Floor)
	Session 78	Session 79	Session 80	Session 81
Session Title	<b>Boundary Waters: How Coastal Issues in Louisiana Impact Neighboring States, Communities and Ecosystems</b>	<b>A Planning Model for the Future: LA-SAFE Moves Toward Implementation</b>	<b>Living on the Edge: Drivers, Impacts and Solutions to Marsh Edge Erosion</b>	<b>Restoration on the Half Shell: Presentations in Non-Technical Language</b>
Moderator	<b>Alexander Kolker</b> Louisiana Universities Marine Consortium	<b>Steve Cochran</b> Environmental Defense Fund	<b>Alisha Renfro</b> National Wildlife Federation	<b>Jimmy Frederick</b> CRCL
11:00	<b>Introduction &amp; Overview</b>	<b>Introduction &amp; Overview</b>	<b>Introduction &amp; Overview</b>	<p>CRCL is proud to partner with the Water Institute of the Gulf and CPRA to offer a this half-day program.</p> <p>Half Shell is an interactive 'mini-conference' experience. The program is tailored to concerned citizens who are familiar with the problems facing our coast but want to learn more. Participants will enjoy two informative, timely, and entertaining sessions, featuring presentations then and a panel and audience discussion.</p> <p>How You Can Engage and Take Action Colette Pichon Battle, Gulf Coast Center for Law and Policy</p> <p><u><a href="#">Panelists</a></u></p> <p><b>Denese Shervington</b> Institute of Women &amp; Ethnic Studies</p> <p><b>Carol Bebelle</b> Ashe Cultural Arts Center</p> <p><b>Chief Thomas Dardar</b> United Houma Nation</p> <p><b>Jonathan Foret</b> South Louisiana Wetlands Discovery Center</p> <p><b>Ryan Lambert</b> Cajun Fishing Adventures</p>
11:05am	<b>Alan Shiller</b> University of Southern Mississippi  Hypoxia in the Mississippi Bight: Understanding Interactions of Circulation and Chemistry in a Complex River-Dominated Coastal Ecosystem	<p><b>Mathew Sanders</b> Louisiana Office of Community Development</p> <p><b>Liz Williams Russell</b> Foundation for Louisiana</p> <p><b>Camille Manning-Broome</b> Center for Planning Excellence</p> <p><b>Pamela Jenkins</b> University of New Orleans</p> <p>In 2017, LA SAFE (Louisiana's Strategic Adaptation for Future Environments), worked with residents of six Louisiana Parishes in an intensive and inclusive planning process around current and future land loss and flood risk. This interdisciplinary panel provides an overview of the process, its implementation, and how it can be modeled for use in other communities.</p>	<b>Kendall Valentine</b> Louisiana State University  Wind Waves Drive Multiple Mechanisms of Erosion of The Marsh Scarp in Barataria Bay, LA	
11:25am	<b>Catherine Fitzpatrick</b> Tulane University  Variation of the Mississippi River and Atchafalaya River Plume Distribution from Data Synthesis of HYCOM Model Outputs and MODIS Imagery		<b>Sujan Baral</b> Louisiana Tech University  Soil Binding Ability of <i>Spartina Alterniflora</i> , Smooth Cord Grass, Established on Dredged Soils in Louisiana Coastal Area	
11:45am	<b>George Ramseur</b> Mississippi Department of Marine Resources, Office of Restoration and Resiliency  LA, MS, AL Coastal System (LMACS): Embracing Functional Boundaries to Drive Comprehensive Estuarine		<b>Thomas Everett</b> Mott MacDonald  Quantification of Swell Energy and Its Impact on Wetlands in a Deltaic Estuary	
12:05pm	<b>Juan Moya</b> Freese and Nichols Inc  Understanding Geological Processes to Forecast Sedimentation Rates on the Texas Gulf Coast		<b>Madeline Foster-Martinez</b> Louisiana State University  Wave Attenuation in San Francisco Bay	
12:25	<b>Discussion</b>	<b>Discussion</b>	<b>Discussion</b>	
12:30	<b>Conference Concludes</b>			

---

# SESSION DESCRIPTIONS

---

## **1 Ecosystem Responses to Mangrove Expansion in Coastal Louisiana**

Wednesday, May 30, 2018 | 10:30am- 12:00 noon | Room 205

This session will explore the impact of mangrove expansion on ecological structure and function of coastal wetland communities. This session will examine the effects of transition from salt marsh to mangroves on food webs, biogeochemical cycling and microbial processes.

## **2 PANEL --- Financing Coastal Restoration: Efforts Underway to Align Projects and Dollars**

Wednesday, May 30, 2018 | 10:30am- 12noon | Room 206 | Continuing Legal Education Credit

This panel will bring together experts from across the sector to discuss comprehensive and forward-thinking financing solutions for coastal restoration in Louisiana. Additionally, it will highlight the importance of including the voice of the business community in advocating for coastal restoration.

## **3 Deepwater Horizon Oil Spill: Coastal Project Implementation and Path Forward**

Wednesday, May 30, 2018 | 10:30am- 12noon | Room 207

The Deepwater Horizon oil spill was the worst environmental disaster in U.S. history and triggered several legal responses with financial implications for Louisiana's coastal program. This session will summarize each settlement action and correlated funding program, how funds may be used within each funding program and specific projects and path forward relative to each funding program.

## **4 Unlocking Water and Sediment Policy to Facilitate Restoration and Protection in Practice**

Wednesday, May 30, 2018 | 10:30am- 12noon | Room 208

Policy frameworks around water and sediment resources aren't always aligned with aspirations for coastal protection and restoration. This session will discuss lessons learned during implementations around the U.S. and how they can improve resilience planning.

## **5 Hurricane Protection and Flood Risk Reduction in Coastal Louisiana**

Wednesday, May 30, 2018 | 10:30am- 12noon | Room 209

This session will provide an overview of challenges and opportunities facing Louisiana and CPRA as efforts continue in implementing Hurricane and Storm Surge Protection Features and Systems across the coastal zone. This session will focus on the working relationships between the Federal, State, Local Governments, and Local Levee Districts to reduce flood risk and improve the sustainability of our coastal landscape, communities and economic future. This session will provide examples of these relationships as well as a review of several programs and projects where work to implement hurricane and storm surge protection continues.

## **6 Mississippi River Mid-Basin Sediment Diversion Program**

Wednesday, May 30, 2018 | 10:30am- 12noon | Room 210

In 2016, Louisiana's Coastal Protection and Restoration Authority formed the Mississippi River Mid-Basin Sediment Diversion Program to implement the Mid-Barataria and Mid-Breton Sediment Diversions. This session will provide an update on the program's structure, goals, milestones accomplished, funding, and contracting. For the Mid-Barataria Sediment Diversion, participants will learn more about the potential construction means, methods, and sequencing, considering maintaining a level of flood risk reduction during construction. Additionally, participants will gain insight into the operational strategy and adaptive management plan, with a focus on the optimization of the sediment to water ratio, natural resources, operational governance, and the framework of the project specific adaptive management plan. This session will close with an overview of the path forward for environmental permitting, engineering and design, and implementation timing.

## **7 PANEL -- Preparing the Next Generation of Louisianans for Coastal Challenges Ahead: Strategies to Educate and Inform**

Wednesday, May 30, 2018 | 10:30am- 12noon | Room 211-212

Students must be provided with tools to design innovative solutions that will create a sustainable future for Louisiana's coastal residents. This panel will inform attendees on methods that are being used to teach students about the issues facing coastal Louisiana. It will focus on preparing the next generation to face Louisiana's coastal challenges. Each of the panelists will discuss strategies used to educate students and create an informed citizenry that will be ready to face the challenges associated with coastal land loss.

## **8 Recent Studies on Subsidence in Coastal Louisiana**

Wednesday, May 30, 2018 | 10:30am- 12noon | Room 213

Subsidence is a key driver of coastal change in Louisiana, and the effects of subsidence are important to consider when planning for the future. However, subsidence is spatially and temporally variable and future subsidence rates are difficult to predict. This session will present several recent studies which provide an update on measurements and predictions of subsidence in coastal Louisiana.

## **9 FILM SCREENING -- Station 15**

Wednesday, May 30, 2018 | 10:30am- 12noon | Rivergate Room

---

**10 Submerged Aquatic Vegetation (SAV) Habitats in an Evolving Coast and Changing Climate**

Wednesday, May 30, 2018 | 1:30pm-3:00pm | Room 205

Submerged aquatic vegetation (SAV) resources are critical natural features in Louisiana and the Northern Gulf of Mexico that provide essential fish and wildlife habitats and perform a variety of valuable ecosystem services. Coastal SAV habitats connect emergent coastal marshes to open water areas and respond rapidly to changes in the environment and, as such, will be some of the first habitats to respond to changing coastal conditions. This session will present research on changing conditions in SAV habitats in Louisiana and the Gulf of Mexico.

**11 PANEL -- Louisiana Coastal Program Law and Policy**

Wednesday, May 30, 2018 | 1:30pm-3:00pm | Room 206 | Continuing Legal Education Credit

This panel will include a presentation and discussion of current legal and policy issues impacting Louisiana's Coastal Program, including land rights, environmental law policies and permitting, education of Louisiana's future coastal lawyers and a roundtable discussion of general coastal policy and legal issues.

**12 Hydrologic Restoration in Southwest Louisiana: Challenges and Opportunities**

Wednesday, May 30, 2018 | 1:30pm-3:00pm | Room 207

The Calcasieu River Salinity Control (CS-65) Project is a major hydrologic restoration project and a keystone project in CPRA's Comprehensive Master Plan for a Sustainable Coast. The CS-65 project has now entered the preliminary engineering and design phase. This session will present results of the advanced hydrodynamic modeling critical to project design, as well as the unique challenges and solutions identified for the design of Southwest Louisiana's largest restoration project.

**13 Planning and Restoration of the Built and Natural Environment**

Wednesday, May 30, 2018 | 1:30pm-3:00pm | Room 208

This session will include presentations on the shared topics of planning and restoration. Perspectives will include beneficial use of site permitting, relationships of people and the land, and the challenges and opportunities of design and implementations.

**14 2017 Master Plan Impacts on Storm Surge and Risk**

Wednesday, May 30, 2018 | 1:30pm-3:00pm | Room 209

This session will highlight results from the Master Plan's Storm Surge, Risk Assessment and Planning Tool teams. This session will describe updates to the modeling approaches and scenarios used in 2017, provide illustrative results of projects recommended for inclusion in the Plan, and summarize the Plan's direct economic impacts on risk reduction, land restoration, and ecosystem services. The last talk will present a benefit-cost analysis of the Plan, focusing on risk reduction benefits.

**15 Modern Processes in the Lower Atchafalaya River System**

Wednesday, May 30, 2018 | 1:30pm-3:00pm | Room 210

This session will highlight ongoing work to understand the movement of sediment and water through the Atchafalaya River and Delta, as well as how to potentially use those resources to restore coastal areas in Terrebonne Parish.

**16 PANEL -- The Role of Higher Education in Preparing a Coastal Workforce**

Wednesday, May 30, 2018 | 1:30pm-3:00pm | Room 2011-212

Academic leadership in water management is vital to the future of Louisiana as tropical storms, hurricanes and flooding present a constant threat to our residents. This panel will explore the role of higher education in ensuring southeast Louisiana becomes a hub of innovation and high-quality labor for coastal protection and restoration. This panel will feature the insights of senior leadership from Greater New Orleans universities discussing their role in building the coastal labor, research and intellectual capacity of Southeast Louisiana.

**17 Integrating Subsurface Geology and Geophysics into Coastal Resiliency**

Wednesday, May 30, 2018 | 1:30pm-3:00pm | Room 213

Faults and salt domes affect surface processes in a variety of ways; yet in the Louisiana coastal zone there has been little integration of these into planning, protection and restoration. This session will bring together geological observations from the surface, near surface and deeper subsurface of the Mississippi River delta plain. This knowledge can provide the basis for an improved understanding of spatial and temporal variations in subsidence and anticipated impacts on coastal communities.

**18 FILM SCREENING -- On Our Watch**

Wednesday, May 30, 2018 | 1:30pm-3:00pm | Rivergate Room

---

# SESSION DESCRIPTIONS - CONT.

---

**19 Research and Response into the Die-back of Roseau Cane (*Phragmites australis*) and Infestation by the Scale Insect *Nipponaclerda biwakoensis* in Southern Louisiana**

Wednesday, May 30, 2018 | 3:30pm-5:00pm | Room 205

Observed *Phragmites australis* die-back in southeastern Louisiana, associated in part with extensive Asian scale insect infestation, led to a plan supported by multiple federal, state and parish agencies to document plant die-back and scale extent, and research potential scale infestation of other host plants and the efficacy of pesticides to limit scale distribution. *Phragmites* die-back and scale spread threaten coastal ecological sustainability, navigation stability and agriculture. This session will present on recent research focusing on Roseau Cane.

**20 PANEL -- Putting Public-Private Partnerships to Practice to Support the Working Coast**

Wednesday, May 30, 2018 | 3:30pm-5:00pm | Room 206 | Continuing Legal Education Credit

Major industries (oil, gas, and shipping) are supported by a web of coastal infrastructure, including roads, ship channels, and ports, that are vulnerable to sea-level rise, subsidence, and the next storm. For the “Working Coast” to continue to flourish, a holistic resiliency approach is needed. This panel will present a public-private partnership example being pursued in coordination with Port Fourchon where protection of critical infrastructure also provides ecosystem service benefits to help make communities more resilient in the face of climate change.

**21 Rockefeller Wildlife Refuge- Management in an Ever-changing Environment in SW Louisiana**

Wednesday, May 30, 2018 | 3:30pm-5:00pm | Room 207

The Rockefeller Wildlife Refuge experiences multiple coastal challenges including 40+ ft./yr. of erosion, saltwater intrusion, and direct exposure to Gulf conditions. Through the diverse projects discussed here, refuge management has maintained the property while providing public and commercial access and opportunities for pioneering wildlife, fisheries and wetlands research. This session will highlight important coastal needs in southwest Louisiana and provides discussion topics for protecting and restoring our coastal resources.

**22 Building Support for Coastal Restoration in Louisiana through Volunteerism**

Wednesday, May 30, 2018 | 3:30pm-5:00pm | Room 208

In response to the land loss issues along the Louisiana coast, many local organizations are working to build public support and understanding through volunteer restoration events. Although these restoration events focus mostly on tree, marsh, and beach grass plantings, there are many organizations that attract different groups of volunteers and have different philosophies of engagement. This session will feature people sharing success stories in building public support for the coast.

**23 Performance and Assessment of Coastal Flood Structures**

Wednesday, May 30, 2018 | 3:30pm-5:00pm | Room 209

This session will evaluate the challenges and opportunities of coastal flood structures. This session will discuss planning efforts for future events as well as post-storm assessments of coastal features including pump stations, levees and natural structures.

**24 Implementation Progress of the System Wide Assessment and Monitoring Program (SWAMP)**

Wednesday, May 30, 2018 | 3:30pm-5:00pm | Room 210

The SWAMP has been developed to obtain repeated long-term (e.g., years to decades) measurements that can be analyzed to detect change resulting from a variety of sources, including large-scale restoration and protection projects, environmental disturbances, changing climate, and other major drivers that impact Louisiana’s coast. This session will provide an update of the development and implementation of SWAMP and describe several recently-acquired datasets and a new analytical tool.

**25 PANEL -- Public Access, Private Property and the Legislature’s Attempt to Find a Solution**

Wednesday, May 30, 2018 | 3:30pm-5:00pm | Room 211-212 | Continuing Legal Education Credit

The Louisiana Legislature recently passed H.R. 178, which gave Louisiana Sea Grant the monumental task of exploring solutions to the fight that has been brewing for years in Louisiana’s coastal marshes between recreational anglers, private landowners and the state over recreational public access to waterways. This panel will reconvene the key stakeholders to publically explore the legal, social and political complexities of the issue and the potential for common ground.

**26 Using Offshore Sand for Barrier Island Restoration**

Wednesday, May 30, 2018 | 3:30pm-5:00pm | Room 213

Erosion of Louisiana’s barrier island systems is a serious problem due to the loss of habitat, reduction of storm-surge capabilities and diminished role in maintaining marine and estuarine gradients. Restoration projects aim to address this problem often using sediment from the Outer Continental Shelf (OCS) to strengthen the coastline. This session will compare the use of nearshore vs. offshore sand, discuss multiple use conflicts on the OCS, and discuss programmatic management of resources.



---

**27 FILM SCREENING – Diversions, Keepers of the Mounds, Born on the Bayou**

Wednesday, May 30, 2018 | 3:30pm-5:00pm | Rivergate Room

**28 Avian Response to Restoration Activities**

Thursday, May 31, 2018 | 8:30am-10:00am | Room 205

The Louisiana Coast has been the source of a variety of restoration activities in the past few years. Many of these activities and projects have positively affected bird populations. This session will focus on avian monitoring approaches and analysis in response to restoration activities.

**29 PANEL -- Implementing Master Plan Marsh Creation Projects**

Thursday, May 31, 2018 | 8:30am-10:00am | Room 206

This panel will provide an open discussion of the engineering expertise gained from the in-house design and construction of marsh creation projects, the experience gained from the partnerships with both engineering consultants and construction contractors, and the research collaboration with local universities to aid in the development of consistent and efficient marsh creation design guidelines and design methodologies for master plan marsh creation projects.

**30 Backfilling Canals: Progress and Pitfalls**

Thursday, May 31, 2018 | 8:30am-10:00am | Room 207 | Continuing Legal Education Credit

Canals have directly and indirectly accounted for a significant portion of Louisiana coastal land loss across the entire coast, yet there have been relatively few restoration projects to backfill or remove the spoil banks of old canals. This session discusses the ecological basis for backfilling canals as a coastal restoration technique, speaks to issues that have stalled this type of work in the past and looks forward to the potential of backfilling opportunities in the future.

**31 Building Partnerships for Coastal Resilience Session**

Thursday, May 31, 2018 | 8:30am-10:00am | Room 208

This session will outline CPRA's Flood Risk and Resilience Program and related activities occurring in coastal Louisiana to anticipate and plan for an uncertain future. This session will present a multi-disciplinary approach to prepare for increasing flood risk. Presentations will highlight how CPRA's flood risk resources can be used by state and parish governments, non-governmental organizations and academia to promote community resilience across coastal Louisiana.

**32 Comprehensive Community Resilience: From Planning to Action**

Thursday, May 31, 2018 | 8:30am-10:00am | Room 209

Community resilience is grounded in effective water management strategies, especially for drainage and storm surge. Recent abnormally heavy rainfall events in Baton Rouge and New Orleans and record-breaking rainfall amounts in Houston associated with Hurricane Harvey and devastating wind and rain from Hurricane Irma across Florida have all brought focus, once again, to the absolute need for effective water management strategies if our coastal communities are to thrive and grow.

**33 Utilizing Mississippi River Water and Sediment Resources – from Analysis to Implementation**

Thursday, May 31, 2018 | 8:30am-10:00am | Room 210

This session will present recent Mississippi River hydrodynamic and sediment transport analyses and the use of these resources for freshwater and sediment diversions. This session will focus on current hydrodynamic and sediment modeling using Delft3, and HEC-RAS6 for evaluating transport patterns and impacts related to proposed projects. In addition, this session will cover the implementation of the Bayou Lafourche Freshwater Diversion Capacity Improvement Project and associated sediment evaluations and conceptual design considerations.

**34 PANEL -- Strategies for Cultivating Social and Economic Justice in Coastal Restoration Planning**

Thursday, May 31, 2018 | 8:30am-10:00am | Room 211-212

Panelists will discuss how social, economic, and climate justice concerns can begin to occupy the center of state and local level coastal planning efforts. The aim is to create a series of recommendations built on the experiences of panelists - tribal leaders, religious leaders, scholars, state planners, and lawyers - that examine how coastal planning can reflect the values and struggles of diverse coastal publics as the CPRA begins to move forward with the next coastal Master Plan.

**35 Adaptive Management Highlights from Louisiana Coastal Protection and Restoration Authority**

Thursday, May 31, 2018 | 8:30am-10:00am | Room 213

Application of Adaptive Management principles to the management of our coast will improve decision-making, build institutional knowledge, and facilitate the informed adjustment of management actions to best achieve long-term sustainability of our coast. This session will include an overview of CPRA's Adaptive Management program and will highlight key components including a process for Stakeholder Engagement, a Basin-level Synthesis Report, and an overview of applied research initiatives which support CPRA.

---

# SESSION DESCRIPTIONS - CONT.

---

**36 FILM SCREENING – Finding Common Ground**

Thursday, May 31, 2018 | 8:30am-10:00am | Rivergate Room

**37 Evaluating Ecological Relationships and Resources in Louisiana’s Estuaries**

Thursday, May 31, 2018 | 10:30am-12:00 noon | Room 205

This session will focus on causative relationships between aquatic organisms and their habitat conditions. Describing the relationships or effects of habitat conditions on species processes or patterns in the field can provide a better understanding of ecological responses to natural disturbances and coastal restoration scenarios. This session will present studies on lower and upper trophic level species that are important to the estuarine food web functioning and production in coastal Louisiana.

**38 PANEL -- Restoration of Louisiana’s Barrier Shorelines: Application of Soft and hard Coastal Protection Approaches**

Thursday, May 31, 2018 | 10:30am-12:00 noon | Room 206

This panel will serve as a platform for coastal engineers, scientists and geologists to discuss the use and application of both soft and hard coastal protection methods on Louisiana’s barrier shoreline. This discussion will include past use and associated lessons learned, potential future uses, and the required engineering and geological analyses to be performed prior to implementation of soft and hard structural protection measures.

**39 Alternate Shoreline Protections**

Thursday, May 31, 2018 | 10:30am-12:00 noon | Room 207

This session will present design considerations, performance evaluations of lessons learned and applications of alternative shoreline protection strategies.

**40 Working Together for Our Working Coast**

Thursday, May 31, 2018 | 10:30am-12:00 noon | Room 208

As an economic hub of national importance dependent on - yet vulnerable to - its unique geography, Louisiana has an ambitious plan to rebuild its wetlands and protect its communities. Doing so will create jobs, spur innovation and strengthen the economy. Representative leaders from the state’s top industries will outline their perspective on the role their industries play in moving forward and identify opportunities for collaboration.

**41 Assessing and Enhancing Community Resilience**

Thursday, May 31, 2018 | 10:30am-12:00 noon | Room 209

This session will include presentations of the shared topic of community resilience. Perspectives will include ecosystem services, climate change, adaptation and disaster response.

**42 Dynamics of Diversion Receiving Basins**

Thursday, May 31, 2018 | 10:30am-12:00 noon | Room 210

River diversions are used to restore sediment-starved marsh in many areas of coastal Louisiana. There are biological, chemical, geological and physical processes which interact in the receiving basins for both sediment and water types of diversions. The main purposes of diversions are for land building, salinity control and nourishing marsh, but there are concerns on flooding, turbidity, water quality and fishery. This session will consider research related to various types of dynamics of river diversion receiving basins. Topics include, but are not limited to, salinity freshening, residence time, mud dispersal, sediment retention, water quality and its potential impact on estuarine environment and life.

**43 PANEL -- Engaging Urban Coastal Communities in Restoration**

Thursday, May 31, 2018 | 10:30am-12:00 noon | Room 211-212

This panel will highlight major achievements, best practices and lessons learned in how to engage communities in New Orleans that often do not see themselves as “coastal,” including framing and non-traditional approaches. Three urban community leaders will discuss coastal messaging, events, field tours, youth outreach, government engagement and the impacts since Katrina. This panel will also look to the future at opportunities for deeper urban engagement in advocacy and the emerging restoration economy.

**44 Creative Approaches to Monitoring the Outputs and Outcomes of Restoration Activities**

Thursday, May 31, 2018 | 10:30am-12:00 noon | Room 213

This session will present approaches to evaluating the outcomes of restoration projects, including quantification of ecosystem services, monitoring long term restoration outcomes, development of consistent monitoring approaches and using monitoring data to inform adaptive management and lessons learned for future projects.

**45 FILM SCREENING – Out da Bayou**

Thursday, May 31, 2018 | 10:30am-12:00pm | Rivergate Room

---

**46 Biogeochemical Processes of Wetlands and Estuaries**

Thursday, May 31, 2018 | 1:30pm-3:00pm | Room 205

This session will use case studies to understand impacts and influences on carbon transport, nitrogen cycling, hypoxia and salinity.

**47 PANEL -- Alternative Transport Methods of Dredge Material for Beneficial Use in Wetland Restoration**

Thursday, May 31, 2018 | 1:30pm-3:00pm | Room 206

This panel will discuss the topic of barge transport of dredge material over conventional direct pipeline for wetland restoration projects. This panel will discuss barge transport operations (dredge, spider barge, hopper barge, off loader), costs associated with barge transport in comparison to direct pipeline, feasibility of barge transport and applications where barge transport should be considered over direct pipeline.

**48 Updates on Programs and Projects in Louisiana's Coastal Basins**

Thursday, May 31, 2018 | 1:30pm-3:00pm | Room 207

This session will provide an overview and update on the projects and programs in Louisiana's Coastal Basins. This session will provide a snapshot of the current state of each basin as well as an outlook of future projects and programs coming to each area. The future outlook will also capture a brief overview of the goals and objectives of the Master Plan for each basin.

**49 The Cooperative Engagement of the Oil and Gas Industry in Coastal Sustainability Planning**

Thursday, May 31, 2018 | 1:30pm-3:00pm | Room 208

The long-term sustainability of the Louisiana coastal zone is of vital importance to the oil and gas industry. This session will bring together elements from oil and gas infrastructure sustainability planning, industry-owned wetlands management strategies, individual project designs funded by industry donations, and geological research using industry 3-D seismic data to underscore the importance of the cooperative engagement of the oil and gas industry.

**50 PANEL -- Resilient and Resolute: Indigenous Strategies in Response to Coastal Erosion and Climate Change Impacts**

Thursday, May 31, 2018 | 1:30pm-3:00pm | Room 209

Five tribes indigenous to the Gulf Coast of Louisiana inhabit Terrebonne and Lafourche Parishes. These tribes lack federal political status, which has impacted their ability to protect, preserve, and maintain their cultural heritage. Many members of these tribes have already been forced to relocate due to the changing ecosystem on which they depend, caused by exploitation of natural resources by outside private industry and agencies coupled with rising sea levels and increased storm surge. This panel will bring together a diverse group of individuals to discuss the indigenous response to coastal erosion and land loss. This panel will discuss how two tribes, Pointe-au-Chien and Isle de Jean Charles, have adopted different measures in response to observed land loss and projected climate change impacts as ways to maintain their cultural heritage.

**51 Innovation and Evaluation of Deltaic Ecosystems**

Thursday, May 31, 2018 | 1:30pm-3:00pm | Room 210

Restoring deltaic ecosystems is a key component of Louisiana's Coastal Master Plan. But questions remain about our ecosystem restoration plans. How well do we fully understand how these ecosystems will change under Master Plan scenario? Can innovations in engineering and design improve the success of restoration plans? This session will pull together researchers, engineers and designers to examine the innovative approaches to rebuilding coastal ecosystems and monitoring their impacts.

**52 PANEL -- Post Disaster Long Term Recovery: Critical Considerations for Creating Resilient Communities**

Thursday, May 31, 2018 | 1:30pm-3:00pm | Room 211-212

Disasters represent a turning point for communities. After coping with immediate impacts, cities and towns are forced to confront vulnerabilities and make choices about how to spend resources. Data and anecdotes are alternatively inspiring and confounding. Drawing examples from Colorado, Louisiana, New Jersey, New York, India and Nepal, this panel will examine advances and oversights in post-disaster housing and infrastructure redevelopment, community planning, and social service delivery.

**53 Forecast and Assessment Tools: A Way to Monitor and Manage Our Coast**

Thursday, May 31, 2018 | 1:30pm-3:00pm | Room 213

This session will highlight digital tools and technical capabilities to monitor, manage, and support coastal planning. These tools will also help improve the science informing the decision-making process.

**54 FILM SCREENING – Island in Crisis, Buried a Sea, Disparaître-Disappearing**

Thursday, May 31, 2018 | 1:30pm-3:00pm | Rivergate Room

---

# SESSION DESCRIPTIONS - CONT.

---

## **55 Understanding the Ecological Function of Restored Marshes**

Thursday, May 31, 2018 | 3:30pm-5:00pm | Room 205

This session will explore the development of ecological functions in restored habitats in coastal Louisiana. This session will present data and analysis related to the development of marsh vegetation communities and soils, as well as avian and nekton utilization of restored habitats.

## **56 PANEL -- Extraction Related Subsidence and the Potential for Uplift**

Thursday, May 31, 2018 | 3:30pm-5:00pm | Room 206 | Continuing Legal Education Credit

This panel will discuss the various causes of subsidence in South Louisiana and what can be done about it. It will speak to the most preventable form of subsidence, related to the history and mechanics of extraction related subsidence, and the quantitative and qualitative impact this anthropogenic phenomenon has had on coastal Louisiana; adaptation of these same mechanical principals in an effort to stem or reverse subsidence, by inducing seawater into aquifers beneath environmentally valuable areas; and how other countries such as the Netherlands have adopted a risk-based management approach to prevent extraction related subsidence in their own critically sensitive coastal areas.

## **57 Sediment Delivery Challenges Across Coastal Louisiana**

Thursday, May 31, 2018 | 3:30pm-5:00pm | Room 207

This session will highlight sediment delivery methods for four distinct restoration strategies, highlighted from projects such as beneficial use of dredged material at Spanish Pass, phased implementation of programmatic marsh creation projects and restoration of barrier islands at Caminada Headlands and Last Island.

## **58 A Place at the Table for the Private Sector in Coastal Protection and Restoration**

Thursday, May 31, 2018 | 3:30pm-5:00pm | Room 208

This session will explore ways in which the private sector can benefit from engagement protection and restoration planning, as well as how public efforts in turn can benefit from private sector solutions.

## **59 Natural System and Human Response to Interior Hydrologic Restoration and Modification**

Thursday, May 31, 2018 | 3:30pm-5:00pm | Room 209

Changes in hydrologic connectivity are causing drastic changes to human and natural systems in the coastal plain. This session will present some cause-effect responses to these changes.

## **60 The River's Role in Coastal Restoration**

Thursday, May 31, 2018 | 3:30pm-5:00pm | Room 210

How does the river transport water, sediment and suspended material from its primary channel to a diversion, and how might this change in the future? This session will address these questions by bringing together a suite of technical and policy-oriented presentations.

## **61 Long-term Strategic Planning and Adaptation from Local to International Perspectives**

Thursday, May 31, 2018 | 3:30pm-5:00pm | Room 211-212

This session will explore various perspectives on strategic planning to adapt to coastal change, as opposed to direct remediation, considering local, state and federal (sometimes conflicting) approaches, with a long-term vision in mind.

## **62 Unmanned Aircraft Systems and Satellite Application for Coastal Protection and Restoration**

Thursday, May 31, 2018 | 3:30pm-5:00pm | Room 213

Coastal protection and restoration programs will require monitoring procedures on site-specific and landscape scales. Recent developments in Unmanned Aircraft Systems (UAS) and satellite technology have sparked interest in their ability to capture hyperspatial and multispectral data for restoration and monitoring needs. This session will examine recent improvements in UAS and satellite acquisitions and various analytical techniques that convert raw imagery into meaningful and actionable information.

## **63 FILM SCREENING – Locked**

Thursday, May 31, 2018 | 3:30pm-5:00pm | Rivergate Room

## **64 Barrier Island Dynamics**

Friday, June 1, 2018 | 9:00am-10:30am | Room 205

There has been extensive restoration work in the past few years on Louisiana's barrier islands as well as research to examine its efficacy. This session will work to promote the understanding of morph dynamics of barrier islands using restoration project analysis and modeling.

---

**65 PANEL -- Communicating the Coast: Challenges and Opportunities in Advancing a Coastal Narrative**

Friday, June 1, 2018 | 9:00am-10:30am | Room 206

This panel will discuss challenges and opportunities in covering stories of Louisiana's coast and provide attendees with specific tips for getting their messages out. Comprised of journalists and communications professionals, the panel will also discuss media coverage, locally and nationally, of issues relating to coastal land loss and restoration, discussing questions such as: What are the big gaps in coverage? How can stories be told more comprehensively? What has the national media gotten right about coastal Louisiana and what could have been reported instead? How can people on the ground – from communications experts to scientists to citizens to policymakers – do a better job elevating stories that matter to journalists?

**66 Restoration Project Performance by Project Type**

Friday, June 1, 2018 | 9:00am-10:30am | Room 207

The measurement of project performance allows for the development of lessons learned which can be used to reduce risk and maximize the success of future projects by iteratively incorporating new information into each step of a project's decision-making process. This session will highlight different restoration project types and provide an overview of how project performance has been assessed.

**67 Vanishing by the Minute: What Land-loss and Development mean for Louisiana's Cultural Heritage**

Friday, June 1, 2018 | 9:00am-10:30am | Room 208

This session will seek to provide a clear appraisal of Louisiana's rapidly disappearing cultural heritage. From the first Native Americans to the first Frenchman, from the first Cajuns to the first Asians, and from New Orleans to Grand Isle, our deltaic landscape is sinking, and with it, everything that make our great state unique. This session calls on all of us to collectively work together to save what is left of our shared heritage.

**68 A Coastal Perspective on Floodplain Management and Coastal Resiliency**

Friday, June 1, 2018 | 9:00am-10:30am | Room 209

This session will highlight how the best available science on floodplain management and coastal resiliency will help to inform current and future policy for state and local communities in Louisiana.

**69 RESTORE Lowermost Mississippi River Management Program (LMRMP)**

Friday, June 1, 2018 | 9:00am-10:30am | Room 210

The RESTORE LMRMP is a large-scale program that will build the technical knowledge base needed to develop an integrated, science-based management strategy for the Lowermost Mississippi River that improves navigation, reduces river flood risk and provides access to crucial sediment and water resources to restore and sustain the surrounding deltaic ecosystem. This session will evaluate current management practices, as well as a wide array of alternatives using an advanced suite of numerical modeling tools.

**70 PANEL - Alternative Oyster Culture (AOC) Using Off-bottom Technology in Louisiana and the Gulf of Mexico**

Friday, June 1, 2018 | 9:00am-10:30am | Room 211-212 | Continuing Legal Education Credit

Off-bottom oyster farming has expanded along the U.S coast from Maine to Florida and has now become a commercial reality in the Gulf, including Alabama and Louisiana. This panel will explore each stage of the business: (1) hatchery (larvae); (2) nursery (spat and seed oysters); (3) oyster farming equipment (cages, bags, longlines); and, (4) actual oyster farms. This technology may allow the industry to adapt and survive the challenges of climate change and planned Mississippi River diversions.

**71 RESTORE Act Center of Excellence for Louisiana: Research to Support Louisiana Coastal Master Plan**

Friday, June 1, 2018 | 9:00am-10:30am | Room 213

The RESTORE Act Center of Excellence for Louisiana (LA-COE) administers funds for research relevant to the regular update and implementation of Louisiana's Coastal Master Plan (CMP). The CMP, developed by State of Louisiana Coastal Protection and Restoration Authority with input from stakeholders uses the best available science and engineering. The CMP is updated every five years and provides an opportunity for new research results to be incorporated, such as those funded by LA-COE 2016 RFP. This session will feature research findings that have been used to support the CMP.

**72 Restoration on the Half Shell Workshop**

Friday, June 1, 2018 | 9:00am-12:30pm | Rivergate Room (First Floor)

Restoration on the Half Shell is an interactive 'mini-conference' experience. The program is tailored to concerned citizens who are familiar with the problems facing our coast but want to learn more. Participants will enjoy two informative, timely, and entertaining sessions, featuring presentations and a panel and audience discussion.

---

# SESSION DESCRIPTIONS - CONT.

---

## **73 Barrier Island Habitats**

Friday, June 1, 2018 | 11:00am-12:30pm | Room 205

Barrier islands provide important shorebird nesting habitat and coastal storm surge protection, but these dynamic habitats must be rebuilt and restored due to a variety of island degrading natural and anthropogenic processes. This session will examine the impacts of barrier island restoration on vegetation and nesting bird habitats.

## **74 PANEL - Implementing Resilience at Four Scales: Opportunities and Challenges in Coastal Louisiana**

Friday, June 1, 2018 | 11:00am-12:30pm | Room 206

Reducing vulnerability and increasing resilience are at the forefront of the coastal planning and development conversation. But resilience is context-specific – what it means in New Orleans is different than Terrebonne and Baton Rouge. This panel will engage people working at four scales - site, neighborhood, community, and region – to discuss resilience implementation and the associated challenges and opportunities.

## **75 Lessons Learned from Louisiana Coastal Projects**

Friday, June 1, 2018 | 11:00am-12:30pm | Room 207

Engineering consultants provide insights from projects they have helped implement across Louisiana's coast. As more projects are implemented, awareness of potential project challenges and how to prepare for them is increasingly important. Foreknowledge of potential problems helps increase effectiveness and efficiency of new projects. This session will review performance and challenges from past projects and possible applications to future projects.

## **76 New Ways of Valuing Restoration**

Friday, June 1, 2018 | 11:00am-12:30pm | Room 208

There are many different methods that are being developed and used to assess benefits associated with coastal restoration. This session will cover a range of innovative techniques for estimation and tracking the value of environmental restoration projects to maximize return on investment.

## **77 Geological Underpinnings of Coastal Land loss and Subsidence**

Friday, June 1, 2018 | 11:00am-12:30pm | Room 209

This session will explore geological processes affecting coastal land loss, such as fault-related subsidence and sediment compaction. It will examine the root causes, provide examples and discuss the policy implications of these forces.

## **78 Boundary Waters**

Friday, June 1, 2018 | 11:00am-12:30pm | Room 210

Many of the environmental factors that drive coastal processes in Louisiana originate in processes that exist beyond the state's borders. Likewise, actions taken within the Louisiana can influence the environment of neighboring states. This session will examine the interactions between coastal processes in Louisiana and coastal processes in adjacent regions. This session will explore physical and biogeochemical processes, in addition to examining how actions taken in Louisiana impact bordering states.

## **79 PANEL -- A Planning Model for the Future: LA-SAFE Moves Toward Implementation**

Friday, June 1, 2018 | 11:00am-12:30pm | Room 211-212

In 2017, LA SAFE (Louisiana's Strategic Adaptation for Future Environments), worked with residents of six Louisiana Parishes in an intensive and inclusive planning process around current and future land loss and flood risk. This interdisciplinary panel provides an overview of the process, its implementation, and how it can be modeled for use in other communities.

## **80 PANEL -- Living on the Edge: Drivers, Impacts and Solutions to Marsh Edge Erosion**

Friday, June 1, 2018 | 11:00am-12:30pm | Room 213

This panel will examine the drivers of marsh erosion, quantification of impacts and assessment vegetative performance of attenuating marsh edge erosion.

## **81 Restoration on the Half Shell – Session 2**

Friday, June 1, 2018 | 11:00am-12:30pm | Rivergate Room

Restoration on the Half Shell is an interactive 'mini-conference' experience. The program is tailored to concerned citizens who are familiar with the problems facing our coast but want to learn more. Participants will enjoy two informative, timely, and entertaining sessions, featuring presentations and a panel and audience discussion.

## NEED TO UTILIZE A PRIVATE SPACE FOR A FEW MINUTES WHILE AT SOC18?

We have a Personal Considerations Room available for attendee use. The room has a chair, mini refrigerator and an electrical outlet. Please ask at the registration desk for availability and details.



SOC18 would like to thank Arc of Greater New Orleans for donating their services preparing 1,100 conference tote bags and lanyards. Arc is a 501(c) (3) non-profit organization serving people with intellectual disabilities and delays from birth through adulthood in Orleans, Jefferson and St. Bernard parishes. If you are interested in creating volunteer opportunities for special needs adults please visit their website [atarcgno.org](http://atarcgno.org).

## WHO IS FRENCHY?

Frenchy has been drawing since he could grip a pencil. Since then, Frenchy's presence has filled venues both large and small with an explosion of creative spirit. New Orleans has been his home, and his muse, since 1997, where the eclectic street and music scene continuously inspire his creative expression to new levels. He travels the world capturing live music performances, festivals, fundraisers and sporting events with style and finesse. From his palette comes vibrantly colored brush strokes inspired by rhythms and melodies, giving emotions a shape in real time. His vivid, energetic pieces captivate art collectors, sports fans and music lovers alike, as if they had the best seat in the house.

Frenchy will create a one-of-kind piece commissioned for SOC18. This incredible piece of original art will then be auctioned via silent auction. Bids will be accepted throughout the conference until 10:45am Friday, June 1, 2018. The winning bid will be announced at the end of Friday's morning break.



**BID FOR A  
CHANCE  
TO WIN A  
FRENCHY  
ORIGINAL!**



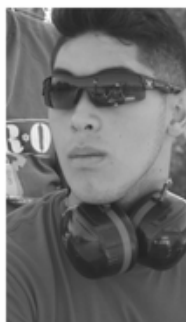
"THE 300"  
LUNCH SPONSOR



GREATER NEW ORLEANS  
FOUNDATION

*For a vibrant region.*

GNOF.ORG



## Hello, future

Today your vision meets its full potential, as CH2M joins Jacobs.

**Everything is possible.**

Find out more at [www.jacobs.com](http://www.jacobs.com)  
or follow us @jacobsconnects



CH2M is now Jacobs.

### Louisiana Offices

Baton Rouge: 225.769.7700  
New Orleans : 504.835.2577



**JACOBS**

**ch2m.**

# COAST 360

A VIRTUAL DAY IN THE DELTA

## VISIT OUR BOOTH

Put on a headset and experience a 360° tour through Louisiana's wetlands with our team of scientists.

Or view the experience online at [MississippiRiverDelta.org/360](http://MississippiRiverDelta.org/360).

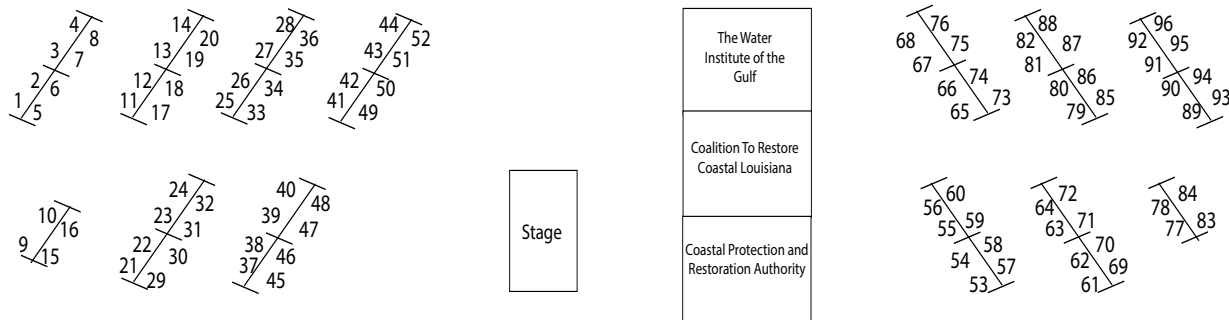
# RESTORE

THE MISSISSIPPI RIVER DELTA





# POSTER PRESENTATIONS



- 46** **Juliar, Danielle - Louisiana State University**  
Filling A Knowledge Gap: Using Oyster Ladders to Understand the Importance of Inundation Duration in Successful Living Shorelines
- 68** **Andrews, Jeffrey - APTIM**  
Bathymetric and Geophysical Data Collection Within the Barataria Basin, Lake Pontchartrain, Lake Borgne and Chandeleur Sound
- 69** **Armandei, Mohammadmehdi - Mississippi State University**  
The Development of a Hydrodynamic/Water Quality Model for Oyster Restoration in the Western Mississippi Sound
- 87** **Banerjee\*, Sanjana - University of Louisiana at Lafayette**  
Impact of Invasive Apple Snails *Pomacea Maculata* on Biogeochemical Cycling of Metals in Louisiana Wetlands
- 7** **Bilskie, Matthew - Louisiana State University**  
Mechanistically Defining Flood Zones Across Southeastern Louisiana
- 31** **Blake, Suzana - University of Miami**  
Ecosystem Modeling With a Focus on Human Wellbeing Outcomes: A Case Study of the Mid-Barataria Diversion Project
- 9** **Boc, Stanley - CDM Smith**  
A Sustainable Approach to Coastal Resilience
- 32** **Bowes\*, Katie - Louisiana State University**  
Sediment Phosphorus Speciation and Distribution in Coastal LA Sediments: Implications for Hypoxia and Food Web Dynamics
- 23** **Champagne\*, Brandon - Louisiana State University**  
Resilience in Context: How Culture Shapes At-Risk Communities
- 6** **Chan\*, Yi - LSU Coastal Sustainability Studio**  
Measuring Community Well-Being in the Face of Increased Flood Risks: A Case Study of the Baton Rouge, Louisiana Area
- 5** **Cobell, Zachary - Arcadis**  
Modeling Storm Surge Suppression Impacts in Galveston Bay
- 10** **Collins, Georganna - Ecology & Environment, Inc.**  
Natural and Nature-Based Features for Coastal Protection
- 79** **Crawford, Frances - University of New Orleans**  
Shell berms, shell berms what do I see: I see marsh-edge collapse looking at me
- 95** **Deis, Donald - Atkins**  
Analysis of Marsh Loss and Erosion within Northern Barataria Bay Louisiana: The Effects of the Deepwater Horizon Oil Spill
- 21** **Drapkin, Julia Kumari - ISeeChange**  
ISeeChange Urban Flooding and Heat Investigations
- 27** **English, Elizabeth - University of Waterloo**  
Wasted Water: The Anthropogenic Relationship Between Humans to Waste and Water Systems
- 25** **English, Elizabeth - University of Waterloo**  
An Innovative Climate Change Adaption Strategy for Flood Resilience and the Protection of Cultural Heritage
- 26** **English, Elizabeth - University of Waterloo**  
Amphibious Retrofit Loss Avoidance Study for Interlake First Nations in Central Manitoba
- 4** **Eustis, Scott - Gulf Restoration Network**  
Contour Culti-Packing Potential for Abandoned Mines on the Amite and Tangipahoa Rivers

\* denotes student presenter

---

# POSTER PRESENTATIONS - CONT.

---

- 75 **Forrest, Beth - APTIM**  
Louisiana Sediment Availability and Allocation Program (LASAAP) - A Planning Tool for Managing Sediment for Restoration
- 3 **Garrison, Donnie - Shell Pipeline Co.**  
Shell Pipeline Uses Natural Infrastructure Solutions to Project Ship Shoal Pipeline and Improve the Nearby Coastal Ecosystem
- 50 **Goecker, Meg - Moffatt & Nichol**  
Ensuring Living Shorelines for the Long-Term Through Modeling and Maintenance: An Alabama Example
- 16 **Green, Rebecca - USDOJ, Bureau of Ocean Energy Management (BOEM)**  
Offshore Renewable Energy Planning Informed by Applied Science Research in the Gulf of Mexico
- 17 **Green, Rebecca - USDOJ, Bureau of Ocean Energy Management (BOEM)**  
Offshore Wind Energy: The Federal Process from Start to Finish
- 70 **Groat, Charles - Louisiana Geological Survey**  
Louisiana Coastal Geohazards Atlas
- 19 **Habib, Emad - University of Louisiana at Lafayette**  
Analysis of Impact of Salinity on Water Supply Stress: Implications and Potential Solutions for Louisiana Freshwater and Coastal Systems
- 20 **Habib, Emad - University of Louisiana at Lafayette**  
The Impact of Upland Extreme Rain Events on Coastal Marsh Systems: A Case Study from the Louisiana Chenier Plain
- 74 **Haddadian, Sahar - Louisiana State University**  
Numerical Modeling of Sediment Transport Due to Alongshore Current-Supported Turbidity Currents Over an Erodible Bed
- 62 **Hamilton, Parker - Jean Lafitte National Historic Park & Preserve**  
Hydrologic Response to Weather Events in the Freshwater Coastal Wetlands of the Barataria Preserve
- 33 **Hanegan, Kevin - Department of Earth and Environmental Sciences**  
Maximizing Diversion Land-Building with Enhanced Sediment Supply
- 76 **Heinrich, Paul - Louisiana Geological Survey**  
Underappreciated Collateral Effects of Gulf of Mexico Sea Level Rise
- 85 **Jaegge, Andrea - The University of Louisiana at Lafayette**  
Quantifying Environmental Controls on Phytoplankton Community Dynamics in Louisiana Coastal Estuaries
- 72 **Jafari, Navid - Louisiana State University**  
3-D Geological Stratigraphy of Coastal Louisiana using Subsurface Borings and Cone Penetrometer Tests
- 73 **Jafari, Navid - LSU**  
Geotechnical Characterization of Wetlands Using Piezocone Penetrometer Tests
- 18 **Jankowski, Krista - CPRA**  
Characterizing the Human Dimension of Coastal Change within the System-Wide Assessment and Monitoring Program (SWAMP)
- 77 **Keogh, Molly - Tulane University**  
Does measuring present-day relative sea-level change in low-elevation coastal zones need rethinking?
- 2 **Kiefer, John - Amec Foster Wheeler**  
Reimagining the Urban Drainage Canal - Case Studies from the South
- 51 **Kime, Brittany - University of New Orleans**  
Geomorphic Evaluation of Barrier Island Sediment Restorations
- 86 **LaCour-Conant, Kellyn - Nicholls State University**  
Vegetative Propagation, S-RNase Sequencing, and Morphological Profiling of *Lycium Carolinianum* Populations in Coastal Louisiana
- 11 **Laska, Shirley - Lowlander Center**  
Louisiana's Response to Extreme Weather
- 80 **Leberg, Paul - University of Louisiana at Lafayette**  
Investigating the Influence of Restoration Practices on Pelican Use of Coastal Islands
- 34 **LeBlanc, Madeline - Louisiana State University**  
Identification of Carbon and Nitrogen Hot Spots in Fourleague Bay Along a Salinity and Sediment Gradient
- 29 **Li, An - Louisiana State University**  
Interactions between groundwater and Mississippi River in the Mississippi River Delta Plain
- 35 **Li, Guandong - Louisiana State University**  
Hydrodynamics and Sediment Dynamics in Breton Sound of Louisiana and Their Interaction with Sediment Diversion
- 84 **Logarbo, Jordan - LUMCON**  
Incorporating *Geukensia granosissima* into Living Shoreline Restoration in *Spartina alterniflora* Dominated Louisiana Salt Marshes

- 
- 8 **Lopez, Betsy - Tulane University**  
The Role of Perception in Anthropogenic and Natural Disaster Preparedness
- 88 **Madere, Darian - Louisiana State University**  
Changes in Bacterial Abundance Under Seasonal Nutrient Variations and Relationship with Phytoplankton Biomass
- 36 **Mariotti, Giulio - Louisiana State University**  
How does mud supply control the large scale horizontal retreat of salt marshes?
- 52 **Maristany, Luis - Mott MacDonald**  
La Quinta Terminal Mitigation Project: Large-Scale Estuarine Habitat Creation in Corpus Christi Bay, TX
- 81 **Martin, Shannon - University of Miami**  
Selecting Ecological Indicators for an Ecosystem Assessment of Barataria Basin
- 71 **McDade, Elizabeth - The Culpepper Group, LLC**  
Understanding the Influence of Subsurface Geological Faulting on Infrastructure, Southeast Louisiana
- 58 **McHugh, Marty - RES**  
Restoration for Resiliency on the East Coast: Superstorm Sandy Case Study
- 37 **Melancon, Nuri - Tulane University**  
Mineral and Organic Accumulation Rates of a Myrtle Grove Wetland in the Mid-Barataria Bay Diversion Receiving Area
- 48 **Melancon, Earl - Louisiana State University**  
Lessons Learned from an Experimental Oysterbreak Along a Gulf of Mexico Shoreline
- 1 **Morgereth, Ed - Biohabitats, Inc.**  
Coastal Green Infrastructure Opportunities for Urban Communities
- 66 **Morsink, Joost - SEARCH, Inc.**  
The Piston Corer: A New Tool for Cultural Resources Survey in Nearshore Environments
- 64 **Nakashima, Lindsay - Audubon Louisiana National Audubon Society**  
Geostatistical Identification Of Potential Hot Spots In Tidal Marsh Deterioration
- 38 **Nelson, Timothy - University of New Orleans**  
Hydrodynamic Controls on the Morphodynamic Evolution of Subaqueous Landforms
- 12 **Nuanla-or, Sunantana - Louisiana State University**  
New Orleans' Joie De Vivre the Joy of Living in New Orleans
- 44 **Nyman, John - Louisiana State University Agricultural Center**  
How High Should Created Wetlands be Built?
- 47 **Ortego, Tyler - ORA Technologies**  
Let the Oysters Do the Work: A Proposal for Creating Truly Biogenic Structures for Resilience and Restoration
- 89 **Pathare, Mrunmayee - University of Louisiana at Lafayette**  
Trophic Interactions between Microzooplankton and Phytoplankton in the Atchafalaya Vermilion Bay
- 83 **Payandeh, Ali Reza - Louisiana State University**  
Assessing the Effects of Cold Fronts on Hydrodynamic Characteristics and Temperature-Salinity Patterns in Barataria Bay
- 15 **Petty, Matthew - CDM Smith**  
From Trash to Treasure: Converting a Municipal Landfill into an Ecological Gem and Recreational Destination
- 59 **Poirrier, Michael - University of New Orleans**  
Benthic Invertebrate Ecozones of the Caernarvon/Breton Sound Estuarine System of the Pontchartrain Basin
- 63 **Rack, Laura - Jean Lafitte National Historical Park and Preserve**  
The Barataria Elevation-Hydrology Array: A Landscape Scale Tool for Scientific Understanding and Resource Management
- 60 **Reiman, Jeremy - Louisiana State University**  
A Recent Update in Carbon Transport: The Mississippi-Atchafalaya River System
- 22 **Reuther, Dustin - Tulane University**  
Restoring Locality: An Anthropological Perspective of the Communities of Lower Terrebonne Parish and Environmental Restoration
- 43 **Riche, Curt - USDA-NRCS**  
Evaluation of Louisiana Ecotypes of Saltgrass for Selection and Use in Salt Marshes of the Coastal Zone of Louisiana
- 65 **Roberts, Brittany - University of New Orleans**  
Effects of Organic Matter on Settling Characteristics of Fine Grained Sediments of Coastal Louisiana
- 14 **Robichaux, Alma - BTNEP**  
Marine Debris Education and Prevention Program
-

## POSTER PRESENTATIONS - CONT.

- 78 **Robinson, Jeremiah - Louisiana State University**  
Inferring Causes of Marsh Loss From Spatial Patterns of Marsh Channel Widening
- 90 **Scheuermann, Ronald - Louisiana State University**  
Spatial and Temporal Variability in Macrobenthic Epifaunal Abundance and Diversity in *Spartina Alterniflora* Marshes
- 53 **Shamaileh, Iait - University of New Orleans**  
Resuspension Characteristics and Critical Shear Stress of Fine Grained Sediments Used in Louisiana Coastal Restoration Projects
- 67 **Sherchan, Samendra - Tulane University**  
Building a Citizen Science Program for Water Quality Monitoring in New Orleans East
- 39 **Spera, Alina - Louisiana State University**  
Effect of Hydrologic Restoration on Coastal Louisiana Freshwater Wetland Soil Properties and Resiliency
- 91 **Tabassum-Tackett, Sabrina - University of Louisiana at Lafayette**  
Heavy Metal Tolerance in Three Marine Phytoplankton Species: Effects of Cadmium Bioaccumulation on Algal Biomolecules and Processes
- 54 **Taylor, Patricia - EPA Region 6**  
Using Mississippi River Sediment: The Success of the Bayou Dupont Projects
- 42 **Thomassie, Garret - USDA – Natural Resources Conservation Service**  
Woody Plant Selection for Coastal Maritime Ridge Restoration and Revegetation
- 41 **Thomassie, Garret - USDA – Natural Resources Conservation Service**  
Native Plant Solutions for Coastal Restoration Along the Gulf Coast
- 55 **Thornton, Chris - Colorado State University**  
Advancements in the Design of Articulating Concrete Block
- 61 **Torres, Julie - University of New Orleans**  
Barrier Island Shallow Subsurface Stratigraphy and Its Role In The Relative Stability Of Grand Isle, La
- 92 **Tucker, Clay - Louisiana State University**  
Tree Rings as Indicators of Coastal Change and Inland Maritime Restoration
- 56 **Tummala, Chandra Mouli - Louisiana Tech University**  
Application of Electro-Kinetic Barriers against Saltwater Intrusion

We must sustain  
solutions that make  
**economic sense** are  
the ones that **stand**  
**the test of time.**

We work to achieve lasting change by creating new and unexpected partnerships among conservation, business and community interests to build durable solutions to important problems.



- 93 **Vaccare, Jessica - Louisiana State University**  
The Impacts of Corexit EC9500A on Wetland Microbial Activity and Community Structure in Barataria Bay, LA, USA
- 13 **Villalon, Augusto - Freese & Nichols**  
Case Study of Historical Approach to Freshwater Inflow Needs in Texas
- 24 **Visser, Jenneke - University of Louisiana at Lafayette**  
Creation of a Wetland Research Facility at Cade, Louisiana
- 57 **Wagner, Robert - Wood**  
Systematic Large-Scale Environmental Restoration of Organic Muck Impaired Waterways- a Case Study
- 49 **Waldron, Ryan - Neel-Schaffer Inc.**  
Analysis & Design of a Nature-Based Shoreline Restoration Along Mobile Bay, Alabama
- 40 **Wang, Bo - Louisiana State University**  
Channel Sediment Accumulation in a Highly Engineered Alluvial River, the Lower Mississippi River
- 45 **Westphal, Karen - National Audubon Society**  
Audubon Louisiana's Marsh Creation by Small Dredge Demonstration and Comparison Project
- 28 **Wiser, Jeana - Buoyant Foundation Project**  
Retrofitting Princeville, North Carolina: Culturally-Responsive Buoyant Flood Mitigation and Displacement Prevention
- 94 **Wobus, Cameron - Abt Associates Boulder**  
Refining Estimates of Oiled Marsh Shoreline Length from the Deepwater Horizon Spill
- 30 **Wu, Qihui - Louisiana State University**  
Sediment Preservation and Redistribution of Mississippi River Distributaries and Their Implication to Coastal Restoration
- 82 **Zapletal, Mirka - University of Louisiana at Lafayette**  
Carnivore Diet on Louisiana Barrier Beaches



## COASTAL WETLANDS PLANNING, PROTECTION, AND RESTORATION ACT

RESTORING COASTAL LOUISIANA SINCE 1990

PROVEN EXPERIENCE

Over 27 years of funding for the design and construction of coastal restoration and protection projects

RESOUNDING SUCCESS

113 projects constructed

218 projects authorized

115,000+ acres protected, created, or restored



## KEEPING YOUR BEDS FERTILE

Quality First Marine, your coastal restoration specialist, is a Marine Contracting & Transportation company servicing the Louisiana, Texas, and Gulf Coast regions.

- ~ Marine Construction
- ~ Bank Stabilization
- ~ Coastal Restoration
- ~ Living Shoreline
- ~ Beach Renourishment



LEAVING A POSITIVE WAKE WHEREVER WE GO



- Woman Owned
- Small Business
- Minority Owned
- 8(a), DBE



**QUALITY FIRST MARINE**  
Construction & Vessel Support

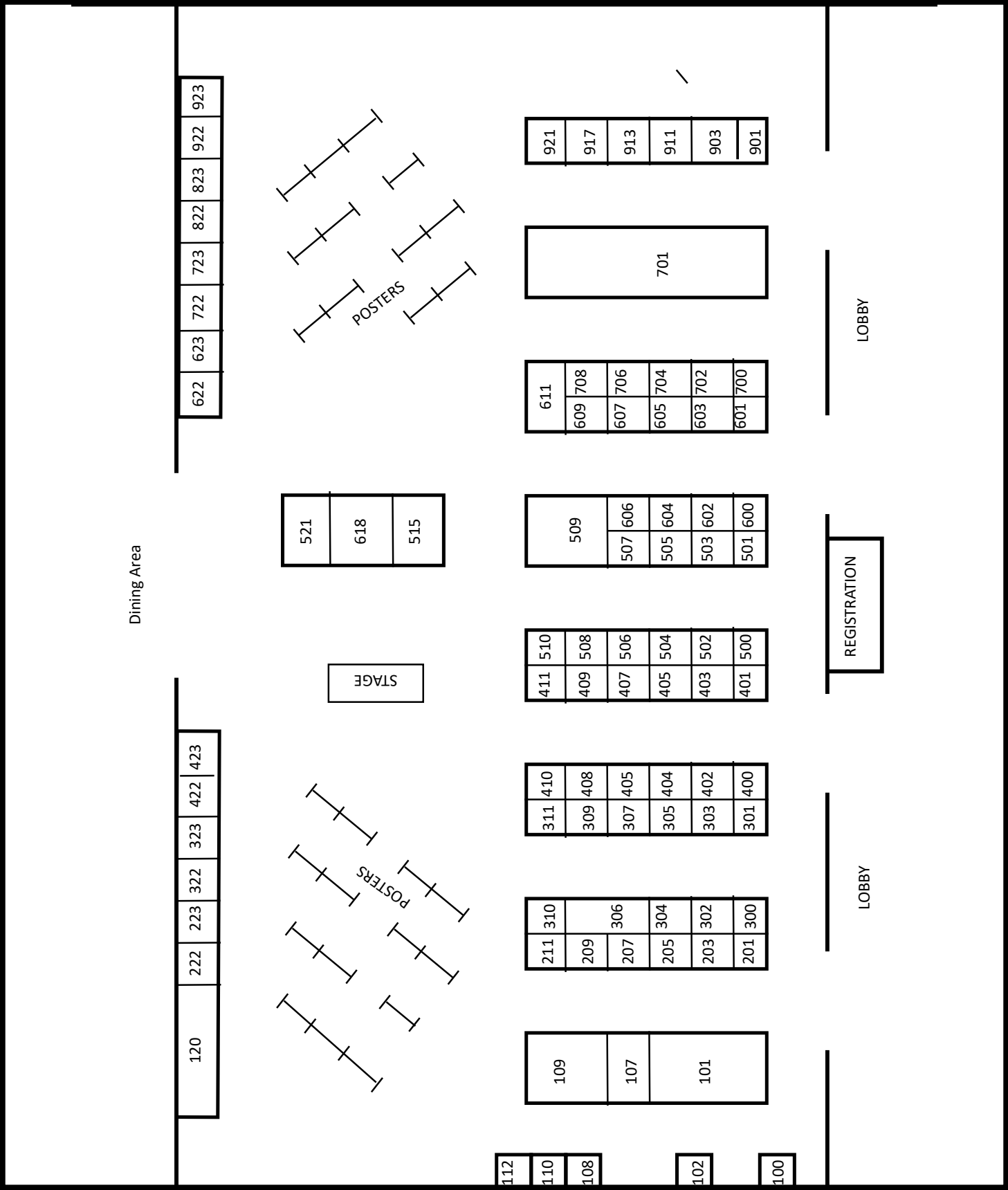
1254 N. Columbia Street, Covington, LA 70433  
(985) 888-6152 - QualityFirstMarine@gmail.com  
www.QualityFirstMarine.com

WWW.LACOAST.GOV





EXHIBIT HALL MAP



# EXHIBITOR CONTACT INFORMATION

<b>515</b>	<b>Coastal Protection and Restoration Authority</b> Chuck Perrodin 150 Terrace Ave Baton Rouge, LA 70802 (225) 342-7308 chuck.perrodin@la.gov coastal.la.gov	<b>109</b>	<b>LSU Coastal Sustainability Studio</b> Mary Bergeron 212 Design Bldg., LSU Campus Baton Rouge, LA 70803 (225) 578-4990 mberg41@lsu.edu css.lsu.edu
<b>521</b>	<b>The Water Institute of the Gulf</b> Amy Wold 1110 River Road South, Suite 200 Baton Rouge, LA 70802 (225) 236-6425 awold@thewaterinstitute.org thewaterinstitute.org	<b>109</b>	<b>LSU College of Coast and Environment</b> Kathe Falls 1002-Q Energy, Coast & Environment Building Baton Rouge, LA 70804 (225) 578-3381 kfalls1@lsu.edu lsu.edu/cce
<b>618</b>	<b>Coalition to Restore Coastal Louisiana</b> Jimmy Frederick 1110 River Road South, Suite 222 Baton Rouge, LA 70802 (225) 412-1784 jimmy.frederick@crcl.org crcl.org	<b>112</b>	<b>Frenchy Gallery</b> 8314 Oak Street New Orleans, LA 70118 (504) 861.7595 info@frenchylive.com
<b>101</b>	<b>Ignite Zone – Student Engagement Series</b>	<b>120</b>	<b>Institute for Coastal and Water Research</b> Edwin Theroit 635 Cajundome Blvd Lafayette, LA 70506 (337) 482-1820 etheriot@louisiana.edu louisiana.edu
<b>102</b>	<b>C-2 Innovations, Inc.</b> Arnis Mangolds 102 Peabody Dr Stow, MA 01775 (978) 257-4820 amangolds@c-2iinc.com c-2innovations.com	<b>201</b>	<b>Freese and Nichols, Inc.</b> Jason Shackelford 301 North Main St. Baton Rouge, LA 70825 (225) 245-7202 jason.shackelford@freese.com freese.com
<b>107</b>	<b>Louisiana Sea Grant</b> Robert Twilley 237 Sea Grant Bldg. - LSU Baton Rouge, LA 70803-7507 (225) 578-6710 rtwilley@lsu.edu laseagrant.org	<b>203</b>	<b>AECOM</b> Jimmy Rayburn 7389 Florida Blvd, Suite 300 Baton Rouge, Louisiana 70806 (225) 922-5908 jimmy.rayburn@aecom.com aecom.com
<b>108</b>	<b>Frank Relle Photography</b> Frank Relle 910 Royal St. New Orleans, LA 70116 504-366-4849 frank@frankrelle.com frankrelle.com	<b>205</b>	<b>Intertek-PSI</b> Ayo Love 724 Central Ave Jefferson, LA 70121 ayodele.love@psiusa.com psiusa.com
<b>109</b>	<b>LSU Center for Coastal Resiliency</b> Scott Hagen 3838 West Lakeshore Drive Baton Rouge, LA 70808 (225) 578-7926 shagen@lsu.edu lsu.edu/ccr	<b>207</b>	<b>GCR Inc.</b> Mona Nosari 2021 Lakeshore Drive, Suite 500 New Orleans, LA 70122 (504) 304-2500 mnosari@gcrincorporated.com gcrincorporated.com
<b>109</b>	<b>LSU Coastal Studies Institute</b> Sam Bentley T Boyd Hall - LSU Baton Rouge, LA 70803 (225) 578-5735 sjb@lsu.edu lsu.edu/csi	<b>209</b>	<b>Moffatt &amp; Nichol</b> Jonathan Hird 301 Main Street, Suite 800 Baton Rouge, LA 70825 (225) 336-2075 jhird@moffattnichol.com moffattnichol.com

# EXHIBITOR CONTACT INFORMATION - CONT.

<b>211</b>	<b>Ellicott Dredges LLC</b> Steve Miller 1425 Wicomico Street Baltimore, MD 21230 (410) 545-0261 smiller@dredge.com dredge.com	<b>306</b>	<b>T. Baker Smith</b> Kevin Beyer P.O. Box 2266 Houma, LA 70361 (225) 228-5599 kevin.beyer@tbsmith.com tbsmith.com
<b>222</b>	<b>MobileQubes</b> Theodore Logan 1441 Canal St Suite 428 New Orleans, LA 70112 (800) 266-0425 Info@mobilequbes.com mobilequbes.com	<b>307</b>	<b>ACEC of Louisiana</b> Janet Tomeny 9643 Brookline Ave., Ste. 112 Baton Rouge, LA 70809 (225) 927-7704 jtomeny@acecl.org acec.org
<b>223</b>	<b>Wayfarer Environmental Technologies, LLC</b> Michael Turley P.O. Box 11937 New Iberia, LA 70563 (225) 916-6382 mike@wayfarertech.com wayfarertech.com	<b>309</b>	<b>Digital Engineering</b> Whitney Watson 527 W. Esplanade Avenue, Suite 200 Kenner, LA 70065 (504) 468-6129 wwatson@deii.net deii.net
<b>300</b>	<b>HDR</b> Samantha Harn 1670 Broadway, Ste. 3400 Denver, CO 80202 (813) 282-2444 samantha.harn@hdrinc.com hdrinc.com	<b>310</b>	<b>Dynamic Solutions, LLC</b> Christopher Wallen 6421 Deane Hill Drive, Suite 1 Knoxville, TN 37919 (949) 585-9218 cmwallen@dsllc.com dsllc.com
<b>301</b>	<b>Louisiana Shoreline Solutions, LLC</b> Charlotte A. Randolph 1215 W. Holly Bellingham, WA 98225 (985) 665-6651 charlottearandolph@gmail.com lynden.com	<b>311</b>	<b>Shell</b> Curtis Thomas 701 Poydras St OSS 3492 New Orleans, LA 70139 (504) 289-4756 curtis.thomas@shell.com shell.com
<b>302</b>	<b>Ocean Surveys, Inc</b> David L. Bell 129 Mill Rock Road, East Old Saybrook, CT 06413 (860) 388-4631 dlb@oceansurveys.com oceansurveys.com	<b>322</b>	<b>W.F. Baird and Associates, Ltd.</b> Matt Clark 2981 Yarmouth Greenway Drive Madison, WI 53711 (561) 400-7820 jmeier@baird.com baird.com
<b>303</b>	<b>JESCO Env.&amp; GeotechServices, Inc.</b> Laurie Teal PO Box 1324 Jennings, LA 70546 (337) 824-9074 lteal@jesous.com jesous.com	<b>323</b>	<b>Walter Marine</b> David Walter PO Box 998 Orange Beach, AL 36561 (251) 979-2200 reefmaker@gulftel.com reefmaker.com
<b>304</b>	<b>Morris P. Hebert, Inc.</b> John Speice 283 Corporate Drive Houma, LA 70361 (225) 766-5866 jspeice@mphinc.com mphinc.com	<b>400</b>	<b>USDA-NRCS</b> Britt Paul 3734 Government Street Alexandria, LA 71302 (318) 473-7756 britt.paul@la.usda.gov nrsc.usda.gov
<b>305</b>	<b>Lonnie G. Harper &amp; Associates, Inc.</b> Leonard Harper 2746 Hwy. 384 Bell City, LA 70630 (337) 905-1079 leonard@harper-group.com harper-group.com	<b>401</b>	<b>HNTB Corporation</b> Bryan Jones 10000 Perkins Rowe Suite 640 Baton Rouge, LA 70810 (225) 368-2800 brjones@hntb.com hntb.com



<b>402</b>	<b>Propex GeoSolutions</b> Kristina Kaldenbach 6025 Lee Hwy., Ste. 425 Chattanooga, TN 37421 (423) 855-1466 kristina.kaldenbach@propexglobal.com propexglobal.com	<b>411</b>	<b>Stantec Consulting Services</b> Lacey Thibodeaux 500 Main St. Baton Rouge, LA 70801 (225) 388-4286 lacey.thibodeaux@stantec.com stantec.com
<b>403</b>	<b>DHI Water &amp; Environment, Inc.</b> Mikkel Anderson 141 Union Blvd, Suite 250 Lakewood, CO 80228 (303) 937-4488 mia@dhigroup.com dhwaterquality.com	<b>422</b>	<b>The Hydrophraphic Society of America - Southeast chapter</b> Mike Nitksa P.O. Box 60341 Lafayette, LA 70596 (337) 315-2190 thsoa.sechapter@gmail.com thsoa.org/Southeast-Chapter
<b>404</b>	<b>Atkins, Atkins, member of the SNC – Lavalin Group</b> Luke Lebas 445 North Boulevard, Suite 805 Baton Rouge, LA 70802 (225) 663-5150 luke_lebas@atkinsglobal.com atkinsglobal.com	<b>423</b>	<b>Arcadis</b> David Escudee 10352 Plaza Americana Drive Baton Rouge, LA 70816 (225) 292-1004 david.escude@arcadis.com arcadis.com
<b>405</b>	<b>CSA Ocean Sciences, Inc.</b> Benton Leblanc 2261 Denley Road Houma, LA 70363 (985) 346-4666 info@csaocean.com csaocean.com	<b>500</b>	<b>APTIM</b> Lindino Benedet 2481 NW Boca Raton Blvd Boca Raton, FL 33431 (561) 609-9144 lindino.benedet@aptim.com aptim.com
<b>406</b>	<b>Neel-Schaffer, Inc.</b> Steve Underwood 12021 Bricksome Ave Baton Rouge, LA 70816-2339 (225) 614-2803 steve.underwood@neel-schaffer.com neel-schaffer.com	<b>501</b>	<b>Abt Associates</b> Yuliya Vartanova 301 N. Main St., Suite 2200 Baton Rouge, LA 70802 (617) 520-2425 yuliya_vartanova@abtassoc.com abtassociates.com
<b>407</b>	<b>Quality First Marine</b> Christina Couvillion 1254 N. Columbia Street Covington, LA 70433 (985) 888-6152 nmouton@qualityfirstmarine.com qualityfirstmarine.com	<b>502</b>	<b>Ardaman &amp; Associates, Inc.</b> Donna McRae 316 Highlandia Drive Baton Rouge, LA 70810 (225) 752-4790 dmcrae@ardaman.com ardaman.com
<b>408</b>	<b>BTNEP</b> Alma Robichaux P.O. Box 2663 Thibodaux LA 70310 (985) 447-0868 alma@btnep.org btnep.org	<b>503</b>	<b>C.H. Fenstermaker &amp; Associates</b> Rene Escuriex 135 Regency Square Lafayette, LA 70508 (337) 314-0498 rene@fenstermaker.com fenstermaker.com
<b>409</b>	<b>S&amp;ME, Inc.</b> Gerald J. Hauske Jr. 2014 W. Pinhook Road, Suite 603 Lafayette, LA 70508 (337) 408-3103 jhauske@smeinc.com sme.org	<b>504</b>	<b>Tetra Tech</b> Joe Cancienne 748 Main Street, Ste. B Baton Rouge, LA 70802 (225) 752-4790 joe.cancienne@tetrattech-ffx.com tetrattech.com
<b>410</b>	<b>Chevron</b> Lauren Buggs 201 St. Charles Avenue, Suite 3707 New Orleans, LA 70170 (985) 302-1401 bugg@chevron.com chevron.com		

# EXHIBITOR CONTACT INFORMATION - CONT.

<b>505</b>	<b>Survey Equipment Services</b> Alan Craig 1775 Westborough Drive Katy, TX 77449 (832) 978-8418 acraig@ses-services.com ses-services.com	<b>603</b>	<b>Martin Ecosystems</b> Nicole Waguespack 5819 McCann Drive Baton Rouge, LA 70809 (225) 292-6750 nicole@martinecosystems.com martinecosystems.com
<b>506</b>	<b>Aquatic Informatics</b> Matt Beyer 2400 – 1111 West Georgia St Vancouver, B.C. V6E 4M3 Canada (602) 810-0489 matt.beyer@aquaticinformatics.com aquaticinformatics.com	<b>604</b>	<b>American Shore and Beach Preservation Association</b> Derek Brockbank 5460 Beaujolais Lane Fort Myers, FL 33919 (917) 536-6878 (cell) dereck.brockbank@asbpa.org asbpa.org
<b>507</b>	<b>Teledyne Marine</b> Kim Dailey (255) 200-0001 kim.dailey@teledyne.com teledynemarine.com	<b>605</b>	<b>Ellicott Dredge Technology</b> Michael Young 1750 Madison Avenue New Richmond, Wisconsin 54017 (913) 642-5100 myoung@imsdredge.com dredge.com
<b>508</b>	<b>Stanley Consultants</b> Jeff Decoteau 721 Government St., Ste. 302 Baton Rouge, LA 70802 (225) 388-4286 decoteaujeff@stanleygroup.com stanleyconsultants.com	<b>606</b>	<b>Dewberry</b> Rebecca Hernadez 1615 Poydras Street, Suite 1295 New Orleans, LA 70112 (504) 872-3769 rhernandez@dewberry.com dewberry.com
<b>509</b>	<b>Restore the Mississippi River Delta</b> Jacques Hebert 3801 Canal Street, Suite 325 New Orleans, LA 70119 (504) 250-3699 jhebert@audubon.org mississippiriverdelta.org	<b>607</b>	<b>Huesker, Inc.</b> Kevin Morgan 3701 Arco Corporate Dr. Suite 525 Charlotte, NC 28273 (704) 526-8050 kmorgan@hueskerinc.com huesker.com
<b>510</b>	<b>CH2M is now Jacobs</b> Heather Layrisson 700 Main Street, Ste. 400 Baton Rouge, LA 70802 (225) 663-5190 heather.layrisson@ch2m.com ch2m.com	<b>609</b>	<b>Keep Louisiana Beautiful</b> Leslie Tate 807 N. Columbia Street Covington, Louisiana 70433 (985) 718-8491 ltate@keeplouisianabeautiful.org keeplouisianabeautiful.org
<b>600</b>	<b>ConocoPhillips</b> Phil Precht 806 Bayou Black Drive Houma, LA 70360 (337) 540-8804 phil.r.precht@conocophillips.com conocophillips.com	<b>611</b>	<b>Coastal Wetlands Planning, Protection, and Restoration Act</b> Kate Spear 700 Cajundome Blvd. Lafayette, LA 70506 (337) 266-8644 speak@usgs.gov lacoast.gov
<b>601</b>	<b>Ducks Unlimited, Inc.</b> Mike Marlos 218 Rue Beauregard, Suite K Lafayette, LA 70508 (337) 408-3288 mcarloss@ducks.org ducks.org	<b>622</b>	<b>Weeks Marine, Inc.</b> Chuck Broussard 304 Gaille Dr. Covington, LA 70433 (985) 875-2500 cbrbroussard@weeksmarine.com weeksmarine.com
<b>602</b>	<b>Coastal Environments Inc.</b> Sherwood Gagliano 1260 Main Street Baton Rouge, LA 70802 (225) 383-7455 sgagliano@coastalenv.com coastalenv.com	<b>623</b>	<b>Wood Environment &amp; Infrastructure Solutions</b> Webb Jackson 169 Dauphin Street, Suite 320 Mobile, AL 36602 (251) 455-1566 webb.jackson@amecfw.com woodplc.com

<b>700</b>	<b>Chustz Surveying Inc</b> Chad Netto 211 Richey St New Roads, LA 70760 (225) 638-5949 cnetto@chustz.com chustzsurveying.com	<b>823</b>	<b>GHD</b> Jason Curole 5551 Corporate Blvd, Suite 200 Baton Rouge, 70808 (504) 858-6826 jason.curole@ghd.com ghd.com
<b>701</b>	<b>Industrial Fabric and Premier Concrete</b> Cody Colvin 510 O'neal Lane Baton Rouge, LA 70808 (225) 906-0758 ccolvin@ind-fab.com premier-concrete.com	<b>911</b>	<b>Volkert, Inc</b> Juba Diez 3466 Drusilla Ln, Suite A Baton Rouge, LA 70809 (225) 218-9440 juba.diez@volkert.com volkert.com
<b>702</b>	<b>Foundation for Louisiana</b> Caressa Chester 4035 Washington Ave New Orleans, LA 70125 (225) 772-1543 cchester@foundationforlouisiana.org foundationforlouisiana.org	<b>901/903</b>	<b>Local Artists</b>
<b>704</b>	<b>Restore America's Estuaries</b> Courtney Lewis 2300 Clarendon Blvd., Suite 603 Arlington, VA 22201 (703) 524-0248 clewis@estuaries.org estuaries.org	<b>913</b>	<b>Resource Environmental Solutions, LLC</b> Russ Krauss 412 North 4th Street, Suite 300 Baton Rouge, Louisiana 70802 (713) 520-5400 russ@res.us res.us
<b>706</b>	<b>Fugro USA Land, Inc.</b> Eric Marx Baton Rouge, LA 70816 (337) 540-8746 emarx@fugro.com fugro.com	<b>917</b>	<b>Mott MacDonald</b> Josh Carter 650 Poydras Street, Suite 2025 New Orleans, LA 70130 (504) 529-7687 josh.carter@hatchmott.com mottmac.com
<b>708</b>	<b>GEC</b> Scott Knaus 8282 Goodwood Blvd. Baton Rouge, LA 70806 (225) 612-3000 rsknaus@gecinc.com gecinc.com	<b>921</b>	<b>Waltzer, Wiygul, &amp; Garside, LLC</b> Joel Waltzer 1000 Behrman Highway Gretna, LA 70056 (504) 539-4338 karin@wwglaw.com wwglaw.com
<b>722</b>	<b>GeoEngineers, Inc.</b> Jennie Hart 11955 Lakeland Park Blvd Baton Rouge, LA 70809 (225) 293-2460 deley@geoengineers.com geoengineers.com	<b>922</b>	<b>Eustis Engineering LLC</b> Erin Schilling 3011 28th Street Metairie, LA 70002 (504) 834-0157 eschilling@eustiseng.com eustiseng.com
<b>723</b>	<b>LA 1 Coalition</b> Henri Boulet 322 Audubon Avenue Thibodaux, LA 70301 (985) 258-1399 henri.boulet@nicholls.edu la1coalition.org	<b>923</b>	<b>Coast Builders Coalition</b> Scott Kirkpatrick 8440 Suite 301 Baton Rouge, LA 70809 (225) 929-7033 scott@coastbuilderscoalition.org coastbuilderscoalition.com
<b>822</b>	<b>OTT Hydromet</b> Dave Procyk 22400 Davis Drive, Suite 100 Sterling, VA 20164 (703) 406-2800 Jkzacos@sutron.com ott.com		



## RESTORATION ON THE HALF SHELL

June 1, 2018

Restoration on the Half Shell is an interactive “mini-conference” experience, ideal for anyone looking to enhance their knowledge of how Louisiana’s coast is changing and what that means for our communities.

The program features presentations about the current state of land loss, coastal restoration, flood risk reduction, and the plans to address these issues. It includes pertinent, timely information from presenters with a wealth of technical knowledge delivered in a non-technical fashion. This is complemented with a panel discussion to tie together a diversity of perspectives on the challenges we face living, working, and playing in coastal Louisiana. Ask questions, give your opinion, and be part of the solution.

The program will begin at 9:00AM and run until 12:30PM.



**"THE 300"** CRCL began an exciting new educational initiative this year called “The 300”. The program is dubbed the “The 300” partly as a nod to 300th Anniversary of New Orleans, which is becoming more and more a coastal city, and partly to signify that we are working to inspire Louisiana’s next generation of coastal warriors.

Over the course of three months, students from 22 schools and one home school group from 11 parishes ranging from Calcasieu to St. Bernard had unprecedented access to active coastal restoration sites, and to coastal practitioners working to protect and restore our coast. This unique program gave 124 students and their teachers an opportunity to experience our coast in a way that many had never been able to before.

The program kicked off with presentations at The Water Institute and a tour of the LSU Center for River Studies. They planted marsh grass at Freshwater Bayou in Vermilion Parish, visited the Surge Barrier in the St. Bernard and road airboats in Caernarvon.

Their last stop is here at SOC18. If you see these students over the next few days give them some words of encouragement and remind them that saving our coast will be up to them and their generation.

# NOTES



# ARCADIS

Design & Consultancy  
for natural and  
built assets



## Resilient and sustainable communities.

Our coastal cities are increasingly vulnerable to the effects of climate change and urbanization. From the flood-prone Netherlands to the drought-prone California coast and storm-sensitive New York City, our water management experts enhance the safety, quality and adaptability of coastal regions worldwide.

**Arcadis.**

Improving quality of life.

[WWW.ARCADIS.COM](http://WWW.ARCADIS.COM)



**EXPLORE**Arcadis  
DOWNLOAD OUR MOBILE APP  
[arcad.is/adv-Connect](http://arcad.is/adv-Connect)



## DUCKS UNLIMITED

LEADER IN WETLANDS CONSERVATION

## DELIVERING A SUSTAINABLE COAST



DUCKS  
UNLIMITED

**PROTECTING THE  
PLANET  
IS EVERYONE'S  
JOB.**



**WE AGREE.**

Chevron is proud to sponsor the  
2018 State of the Coast Conference.


We all share the same planet. So we all need to take good care of it. At Chevron, we continually strive to improve our environmental protection processes. And we're committed to operating safely and responsibly. Because this is our home, too. Learn more at [chevron.com](http://chevron.com)



**human energy**

CHEVRON, the CHEVRON logo and HUMAN ENERGY are registered trademarks of Chevron Intellectual Property LLC. © 2008 Chevron U.S.A. Inc. All rights reserved.

**ConocoPhillips**



Same name.  
Same values.  
**Local Pride.**

At ConocoPhillips, we're building on our SPIRIT Values – safety, people, integrity, responsibility, innovation and teamwork – to create a company like no other. A company with global reach and strong ties to the local communities where we operate. Along with our employees who live and work here, ConocoPhillips is proud to call Louisiana home.


As an industry leader now exclusively focused on exploration and production, we are pioneering a new standard of excellence. And even as we embark on this new journey, the way we do business, our pride as a Louisiana citizen – our spirit – is staying the same.

[www.conocophillips.com](http://www.conocophillips.com)


© ConocoPhillips Company. 2014. All rights reserved.

# Global experience on your doorstep

As one of the oldest dedicated coastal engineering firms in the world, we have been providing innovation where land meets water for over 75 years



**Proud sponsor of the  
Louisiana Sea Grant Student  
Engagement Series Ignite Zone**



**moffatt & nichol**

Creative People, Practical Solutions.®

[moffattnichol.com](http://moffattnichol.com)



# COMMITTEES

# NOTES

## Program Committee Members

- Stephen Barnes, Louisiana State University
- Melissa Baustian, The Water Institute of the Gulf
- Melissa Carle, National Oceanic and Atmospheric Administration
- Alyssa Dausmann, RESTORE Council
- Monica Farris, University of New Orleans
- Scott Hagen, Louisiana State University
- Nedra Hains, Chenier Plain Coastal Restoration & Protection Authority
- Jonathan Hird, Moffatt & Nichol
- Beaux Jones, Baldwin, Haspel, Burke & Mayer, LLC
- Scott Kirkpatrick, Coast Builders Coalition
- Alex Kolker, LUMCON/Tulane
- Glenn Ledet, Coastal Protection & Restoration Authority
- John Monzon, Southeast Louisiana Flood Protection Authority-West
- Natalie Peyronnin, Environmental Defense Fund, Chair
- Rick Raynie, Coastal Protection & Restoration Authority
- Gregg Snedden, United States Geological Survey
- Emily Vuxton, Coalition to Restore Coastal Louisiana
- Andy Wellbaum, Shell Oil Company
- Clint Willson, Louisiana State University

## Sponsorship Committee Members

- Chuck Broussard, Weeks Marine
- Joe Cancienne, Tetrattech
- David Escude, Arcadis
- Greg Grandy, Coastal Engineering Consultants, Inc.
- T. Bradley Keith, Gulf South Strategies and Solutions, LLC
- Clair Marceaux, Cameron Parish Port
- Garvin Pittman, Fenstermaker
- Nick Speyrer, Emergent Method

## Student Engagement Committee Members

- Abigail B. Bockus, Ph.D., Louisiana Universities Marine Consortium
- Dani Dilullo, Louisiana Sea Grant
- Aimee Hollander, Nicholls State University
- Navid H. Jafari, Ph.D., Louisiana State University
- James Nelson Ph.D., University of Louisiana at Lafayette
- David Podgorski, University of New Orleans
- Tracy Quirk, Ph.D, Louisiana State University
- Beth Stauffer, Ph.D., University of Louisiana at Lafayette
- Illya Tietzel, Ph.D., Southern University at New Orleans
- Robert Twilley, Ph.D., Louisiana Sea Grant, Chair

## NEED TO HOST A MEETING WHILE AT SOC18?

We have an Ad Hoc Meeting Room available  
for attendee use. Please ask at the  
registration desk for availability and details.



Shell has focused our partnerships with many organizations in the U.S. to protect more than 13 million acres of wetlands, clean and remove 600,000 pounds of debris from shoreline, and conserve more than 1.8 million acres of critical habitat. We are proud to support and partner with CRCL and other like-minded groups to help us #Makethefuture and to improve conditions on our coasts and in our waters.



Find out more @[www.shell.us/conservation](http://www.shell.us/conservation)



The Foundation for Louisiana works with public, private, philanthropic, NGO and community-based partners to develop and implement strategies that support communities and economies affected by land loss, increased flood risk and restoration across coastal Louisiana.

Through technical and grantmaking support, the foundation's Coastal Resilience Leverage Fund has leveraged millions to catalyze local skillsets and resources, to bolster a range of organizations and regional strengths, and to integrate related activities towards comprehensive statewide response to coastal change.



FoundationforLA



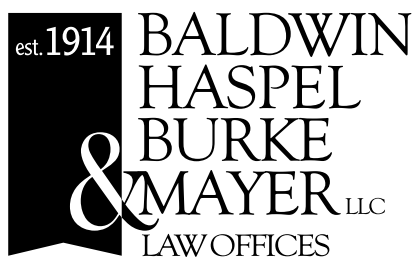
<https://www.foundationforlouisiana.org>



<https://www.facebook.com/foundationforlouisiana/>



**BHBM IS A PROUD SPONSOR OF SOC 2018.**



Baldwin Haspel Burke & Mayer has been serving New Orleans since 1914, representing clients in matters ranging from tax and estate planning to commercial litigation and coastal law. With roots in Louisiana and resources stretching across the world, we strive to lead in an ever-changing business and litigation environment. Learn more at [www.bhbmlaw.com](http://www.bhbmlaw.com).

**BHBMLAW.COM**

1100 Poydras Street, 36th Floor  
New Orleans, LA 70163 | 504.569.2900

Responsible Attorney: Karl Zimmermann

## Continuing Legal Education Credits

Sponsored by Baldwin Haspel Burke & Mayer, LLC

SOC18 has been approved to offer 10.5 hours of CLE credit by the Louisiana Bar Association. SOC18 will offer a wide range of topics to help fulfill your yearly CLE requirement.

The sessions offered for CLE credit:

### **Financing Coastal Restoration: Efforts Underway to Align Projects and Dollars**

*Wednesday, May 30, 2018*

*10:30 a.m. — 12 noon*

*Room 206*

### **Louisiana Coastal Program Law and Policy**

*Wednesday, May 30, 2018*

*1:30 p.m. - 3:00 p.m.*

*Room 206*

### **Putting Public-Private Partnerships to Practice to Support the Working Coast**

*Wednesday, May 30, 2018*

*3:30 p.m. - 5:00 p.m.*

*Room 206*

### **Public Access, Private Property and the Legislature's Attempt to Find a Solution**

*Wednesday, May 30, 2018*

*3:30 p.m. - 5:00 p.m.*

*Room 211-212*

### **Backfilling Canals: Progress and Pratfalls**

*Thursday, May 31, 2018*

*8:30 a.m. - 10:00 a.m.*

*Room 207*

### **Extraction Related Subsidence and the Potential for Uplift**

*Thursday, May 31, 2018*

*3:30 p.m. - 5:00 p.m.*

*Room 206*

### **Alternative Oyster Culture: Using Off-bottom Technology in Louisiana and the Gulf of Mexico**

*Friday, June 1, 2018*

*9:00 a.m. - 10:30 a.m.*

*Room 211-212*

Attendance records for Louisiana licensed attorneys will be furnished to you and to the MCLE Committee within 30 days of the course date.



JOIN US FOR A

*Women's Coastal  
Leadership Breakfast*

JUNE 1, 2018

8:00 AM

EACH YEAR MORE AND MORE WOMEN BECOME INVOLVED IN LOUISIANA'S COASTAL ISSUES. FROM ELECTED OFFICIALS, ACADEMICS, ENGINEERS, PUBLIC AGENCIES TO PRIVATE FIRMS AND COMMUNITY ORGANIZERS, WOMEN ARE PLAYING PROMINENT ROLES IN VARIOUS ASPECTS OF OUR LAND LOSS CRISIS.

CRCL'S WOMEN'S COASTAL LEADERSHIP BREAKFAST RECOGNIZES THE DEDICATION, INNOVATION AND LEADERSHIP OF THESE WOMEN WHILE PROVIDING INSPIRATION AND NETWORKING OPPORTUNITIES FOR WOMEN IN THE FIELD.

JOIN US FOR A MORNING OF INSPIRING CONVERSATION WITH SOME OF LOUISIANA MOST INFLUENTIAL WOMEN.

SOC'S INAUGURAL WOMEN'S COASTAL LEADERSHIP BREAKFAST WILL BEGIN 8:00AM ON FRIDAY, JUNE 1. THERE IS NO COST TO ATTEND THIS ONE OF KIND EVENT. ALL SOC18 PARTICIPANTS ARE WELCOME.

---

# WOMEN'S COASTAL LEADERSHIP BREAKFAST BIOS

---



In order above: Cynthia Duet; Keala J. Hughes; Norma Jean Mattei; Denise J. Reed; Jessica Vallelungo

## **Cynthia Duet**

Cynthia is the Deputy Director of Audubon Louisiana. She interacts with government agencies, Louisiana legislators and congressional staffers, and coastal landowners and stakeholders to advance coastal policy, funding, and project implementation. A former deputy director of the Louisiana Governor's Office of Coastal Activities, Cynthia has nearly 20 years of Louisiana-specific experience in coastal policy development, strategic coastal planning, and environmental project management and education. She is the policy and legislative analyst for Audubon's state office and also serves as the liaison for coastal landowners and leaders of the state's coastal restoration and regulatory programs. Cynthia is a member of the Restore the Mississippi River Delta coalition and the Rainey Conservation Alliance, a strategic landowner advocacy group focused primarily on conserving and restoring approximately 185,000 contiguous private acres of marsh and shoreline in Vermilion Parish—parts of which are held in ownership by the National Audubon Society. She is also a participating member of the state's Coastal Master Plan Framework Development Team and Landowner Focus Group, and various other standing committees.

## **Keala J. Hughes**

Keala Hughes is the Director of External Affairs & Tribal Relations, Gulf Coast Ecosystem Restoration Council (RESTORE Council). Keala has 13 years of external affairs experience with the federal government. She previously worked for the U.S. Environmental Protection Agency, coordinating Gulf Coast stakeholder meetings after the BP oil spill, and as a liaison for the Federal Emergency Management Agency to Congressional, State, Local and Tribal leaders for hurricane disaster recovery information. Keala earned a Bachelor of Science in Biology with a minor in Chemistry from Xavier University of Louisiana and a Master of Business Administration from the University of Phoenix.

## **Norma Jean Mattei**

Norma Jean Mattei is Interim Dean of the College of Engineering at the University of New Orleans and professor in UNO's Department of Civil and Environmental Engineering. She has been active in the American Society of Civil Engineers (ASCE) for more than 20 years in local, regional and national leadership roles and was elected by the Society's membership as the 2017 ASCE President. In 2012, President Obama named Mattei one of three civilian members of the Mississippi River Commission, which researches and provides policy and work recommendations covering flood control, navigation and environmental projects. In that capacity, she helped oversee a drainage basin that covers 41 percent of the nation. The governor of Louisiana appointed her to the state's licensing board for professional engineers — LAPELS. She also serves on the board of directors the Louisiana Transportation Research Center Foundation and served on the Louisiana Technology Council's Board. Mattei earned a bachelor's degree in civil engineering in 1982 and a doctorate in 1994, both from Tulane University.

## **Denise J. Reed**

Denise J. Reed is a nationally and internationally recognized expert in coastal marsh sustainability and the role of human activities in modifying coastal systems with over 35 years of experience studying coastal issues in the United States and abroad. Dr. Reed has served as a Distinguished Research Professor at the University of New Orleans and spent five years as Chief Scientist at The Water Institute of the Gulf. She has served on numerous boards and panels addressing the effects of human alterations on coastal environments and the role of science in guiding restoration and has been a member of the USACE Environmental Advisory Board and the NOAA Science Advisory Board. Dr. Reed received her B.S. degree in Geography from Sidney Sussex College, and her M.A. and Ph.D. degrees from University of Cambridge.

## **Jessica Vallelungo**

Jessica Vallelungo is a native of St. Bernard and currently serves as the Career and Technical Education Coordinator for the St. Bernard Parish Schools. She received her BFA in Graphic Design and worked as a web and print designer for several years. Her passion for working with young people brought her to change careers. Jessica returned home to lead the school district's new JumpStart program, connecting students to career opportunities. She has been instrumental in growing parish, regional, and state-wide partnerships and has been a leader in shaping change for Career and Technical Education in Louisiana.



Permanent Canal Closures and Pumps Project ↑  
New Orleans, Louisiana

Design with community  
in mind

