

Central Wetlands Reforestation Collective



The Central Wetlands Reforestation Collective (CWRC)

A group of organizations re-establishing a bald cypress and water tupelo bottomland hardwood forest near New Orleans over a 4-year period



COMMON
GROUND
RELIEF

The Central Wetlands Reforestation Collective



CWRC's 4 Year Plan

33,000

Native Trees
characteristic of a
bottomland hardwood
forest



33,000

Plugs of Marsh Grass

1000

Submerged Aquatic
Vegetation plants

2000

Volunteers

Funding

CPRA

\$404,643

\$287,454 in kind match

Conservation and Restoration
Partnership Fund

Jan 2023

Dec 2026

July 2023

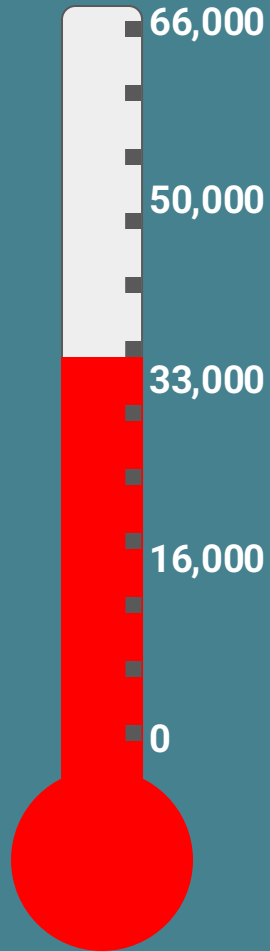
June 2026

NOAA Fisheries

\$544,225

Coastal Habitat Restoration and Resilience
for Underserved Communities

Trees and Grasses



Planting Sites - CGR, CSED and Meraux

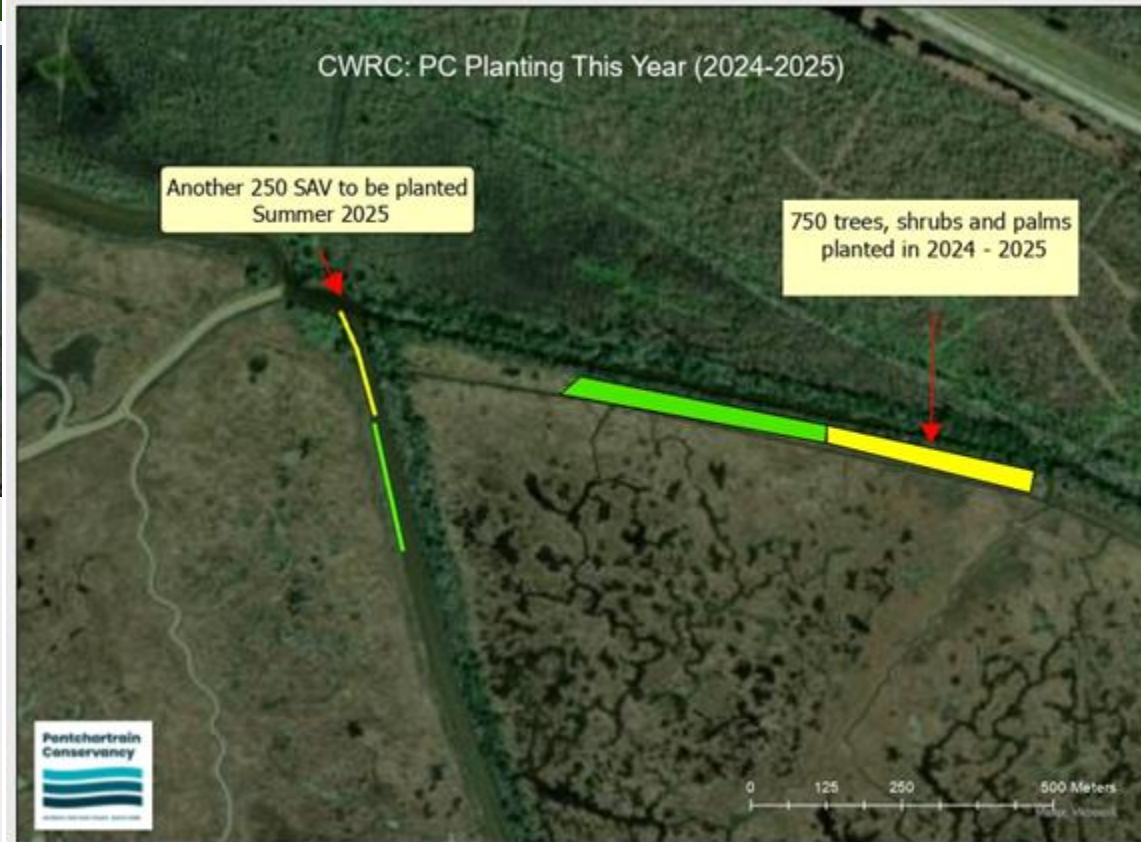


Planting Sites - PC



750 trees included:

- 350 Live Oak
- 150 Green Ash
- 150 Red Swamp maple
- 75 Button Bush
- 75 Palmetto Palm
- 50 Sycamore



What We Did - PC

SAV are hard to see underwater



Planting Sites - CRCL



Planting Sites - Combined



Year 1 Monitoring CGR, CSED and Meraux

Site	Trees monitored	Survivability	Average growth rate
Bayou Bienvenue	350	88%	N/A

Year 1 Monitoring PC

Site	Trees/SAV monitored	Survival	Average growth rate
Oak Ridge 23/24	225	95%*	-0.17 m
SAV planting 23/24	Summer 2024	Target 30%	NA

***Many trees, shrubs and palms were Did Not Find**

Why?

Year 1 Monitoring CRCL

Site	Trees monitored	Survivability	Average growth rate
Violet Canal	196	18%	0.09 cm
Pump 4	97	79%	-0.15 cm
Pump 5	90	51%	-0.39 cm



Reflections on first two years

Successes

Collaboration

Shared data on salinity and site selection criteria

Shared institutional knowledge and expertise

CSED, CGR, and Meraux combined staffing & equipment to carry out projects

Coordination

All partners shared volunteer dates in advance to avoid competition

Cross-posting boosts visibility for all

Interdependence promotes collaboration despite challenges

Planting

All partners met their goals in Years 1 and 2

Some sites have shown solid survival of planted species

Adaptive management strategies have been developed to improve outcomes at more challenging sites

Challenges

Access

Limited public access to planting sites

Dependent on boat transport, AND you need the right boat!

Dependence on boats limits volunteer group #s

Climate

Increased sustained heat shortens planting window

Drought of 2023 likely impacted survival outcomes

Saltwater wedge may also have impacted CWRC planting sites

Additional Expenses

Increased transportation costs

Increased overhead, including required insurance policies

Additional planting days increased staffing costs

Die-off of 2023 in all local nurseries



Year 1 Combined Impact

Hundreds of Community Volunteers Engaged

Students Groups Engaged: (Chalmette HS, Loyola University, Southeastern Louisiana University, Nunez Community College)

Acreage Improved/Planted: 50 acres

Carbon Stored: 3.515 tonnes C/year

Thank you to our funders!!



Any Questions?