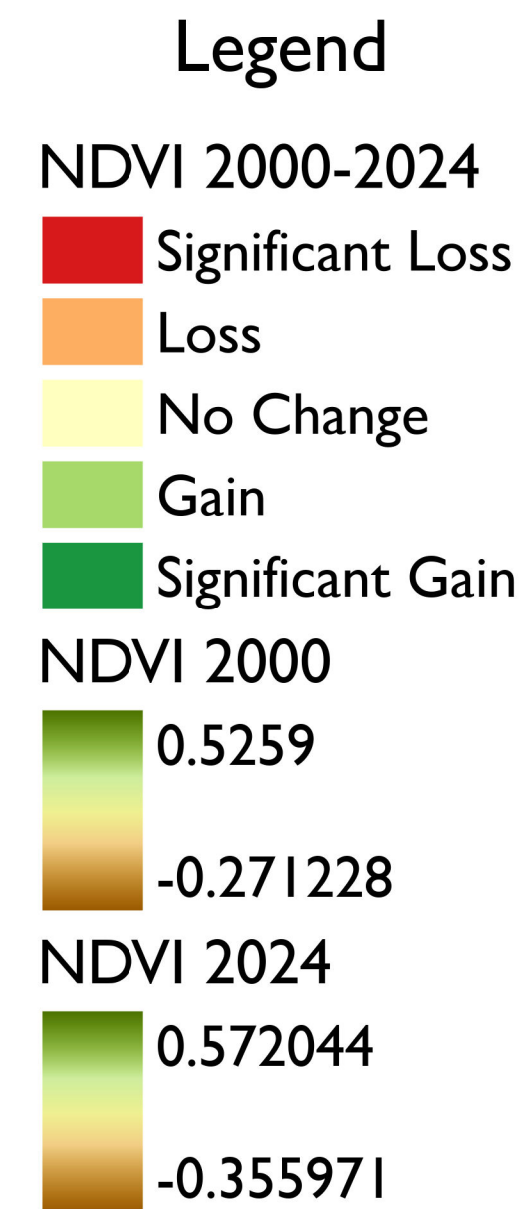
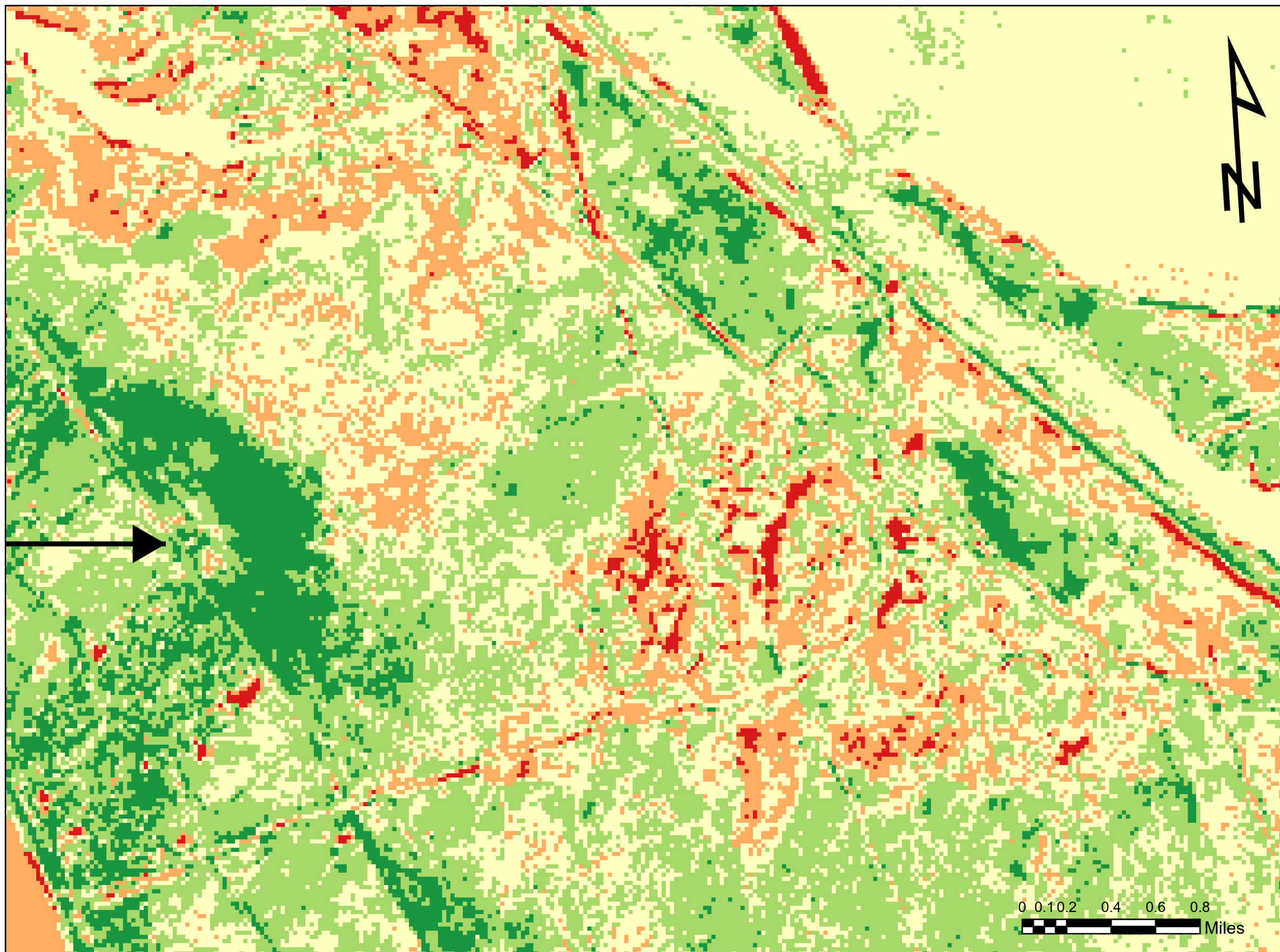
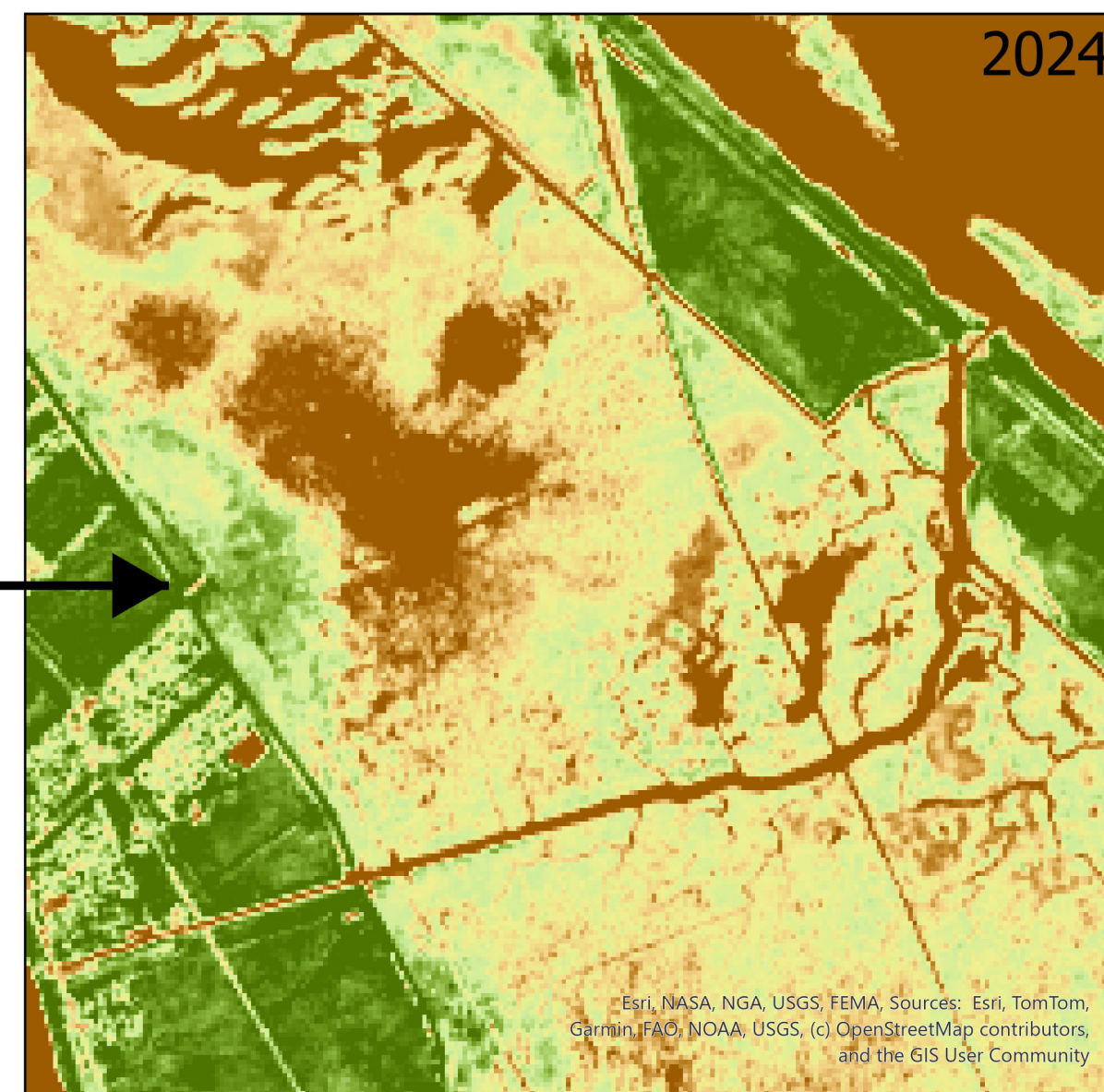
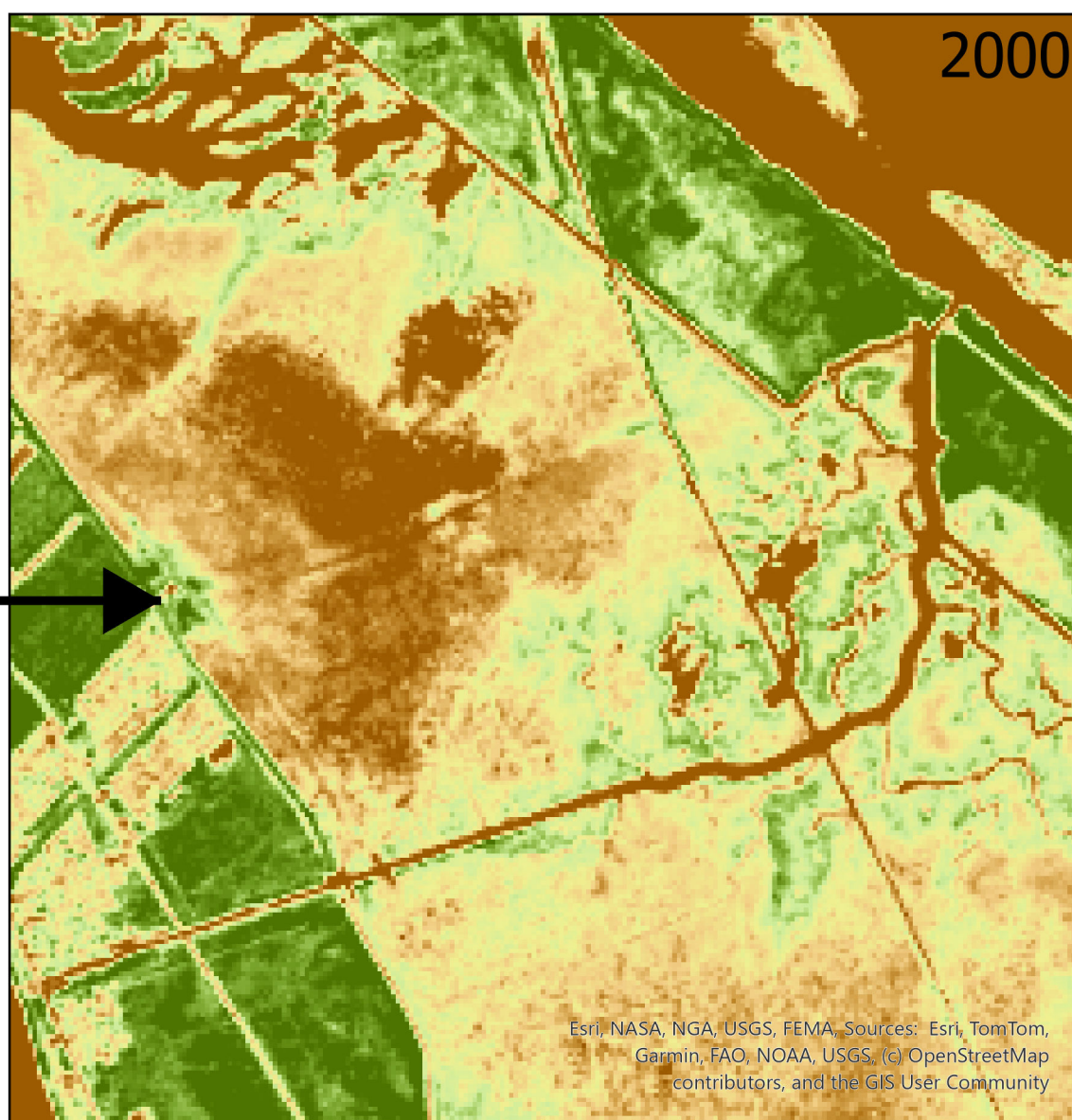


Violet, Louisiana Change in Vegetation Health 2000-2024



Normalized Difference Vegetation Index created using near infrared and red bands collected from Landsat 5 (November 2000) and Landsat 9 (November 2024) over Violet, Louisiana. Change in vegetation health mapped using subtraction then reclassification of pixel values into natural breaks over 5 classes; Values range from -1 to 1 with 0 indicating no change. Negative NDVI value may indicate dead vegetation or open water. No Change value may indicate open water. Stretch type is maintained at a standard deviation of 1. Arrow indicates the location of a freshwater pumping station. Significant waterways include Violet Canal, Livaudais Bayou, Bashman Bayou, Los Islenos Bayou, Terre-Beau Bayou, Serigne Bayou and the Mississippi River Gulf Outlet.



Ashe Burke

Nunez Community College
AAS GIS Technology and Coastal Studies

April 2025

Sources: USGS EarthExplorer, ArcGIS Pro, Esri Support.

Esri, NASA, NGA, USGS, FEMA, Sources: Esri, TomTom, Garmin, FAO, NOAA, USGS, (c) OpenStreetMap contributors, and the GIS User Community

Esri, NASA, NGA, USGS, FEMA, Sources: Esri, TomTom, Garmin, FAO, NOAA, USGS, (c) OpenStreetMap contributors, and the GIS User Community