



Developing the Barrier Island System Management (BISM) Program

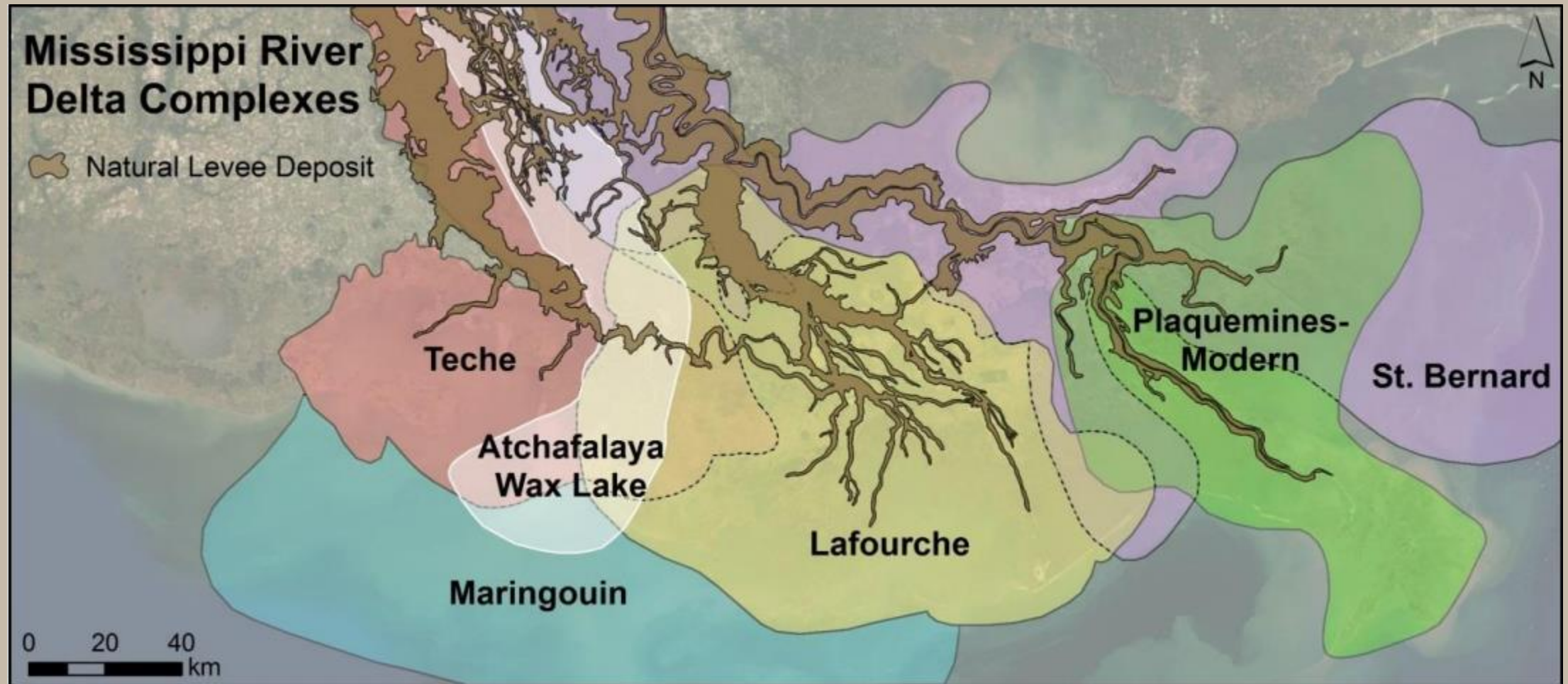
Matthew Vincent

Louisiana Coastal Protection and Restoration Authority

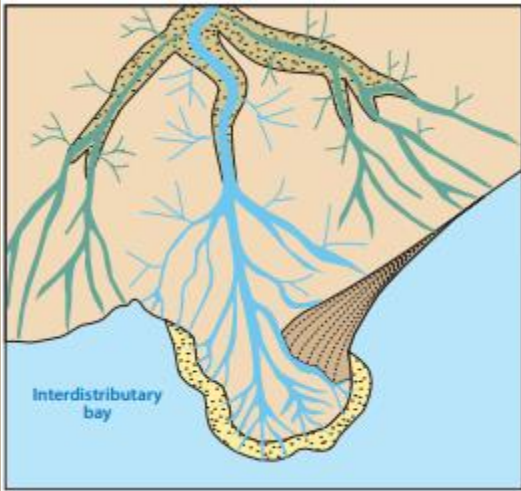
CPRA Barrier Island Related Efforts

- 40 BI Projects
- Barrier Island Comprehensive Monitoring Program (2005)
- Barrier Island Maintenance Program (2009)
- Louisiana Sand Resource Database (2010)
- Breach Management Program (2014)
- Louisiana Sediment Management Plan (2015)
- Borrow Area Monitoring and Maintenance (2015)
- System Wide Assessment Monitoring Program (2015)
- Operational Sediment Budgets (2020)

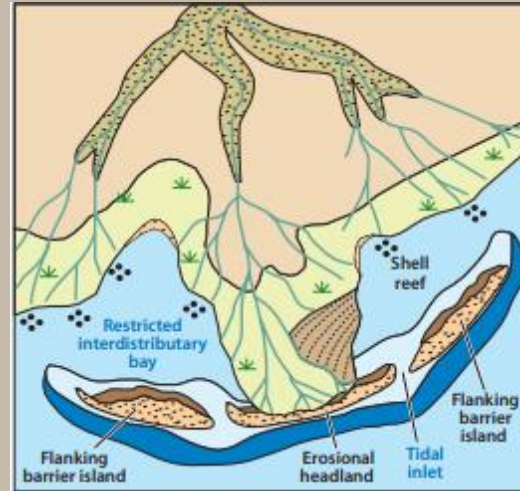
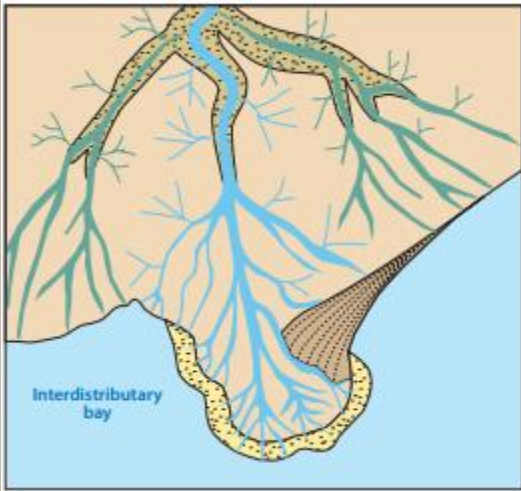
Formation of the Louisiana Deltaic Plain



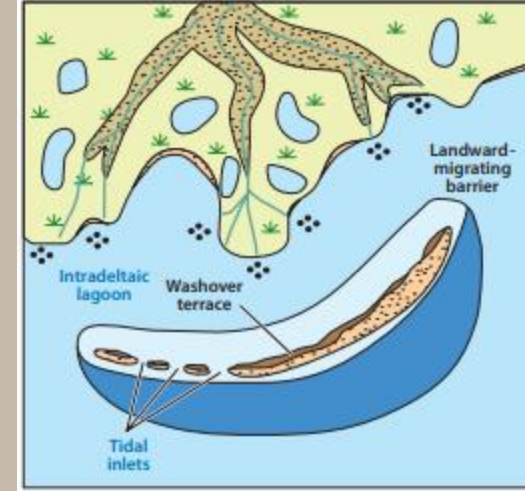
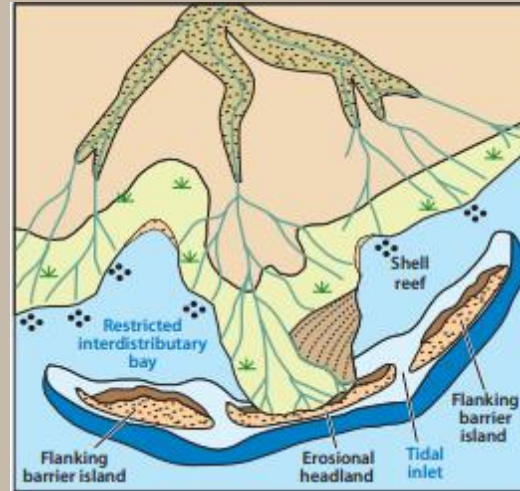
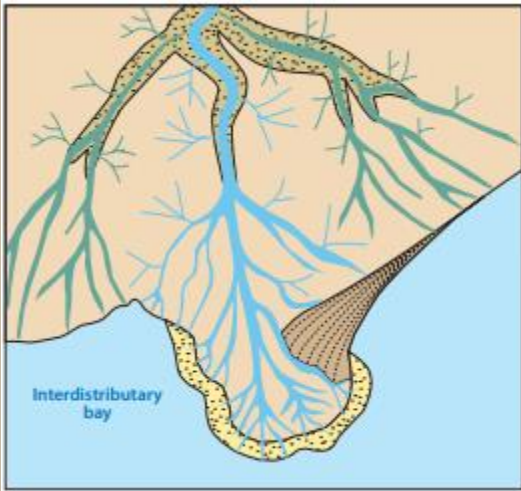
Barrier Island Development



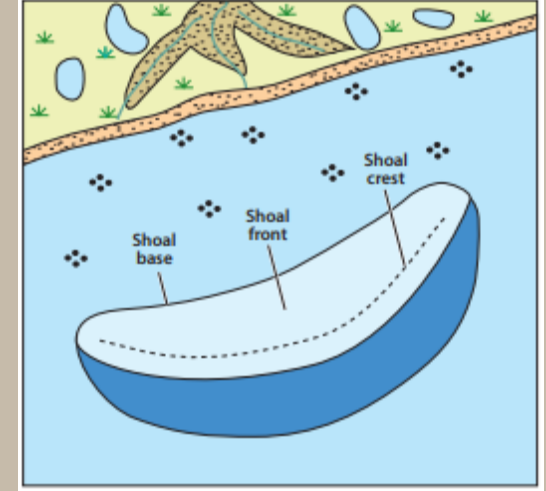
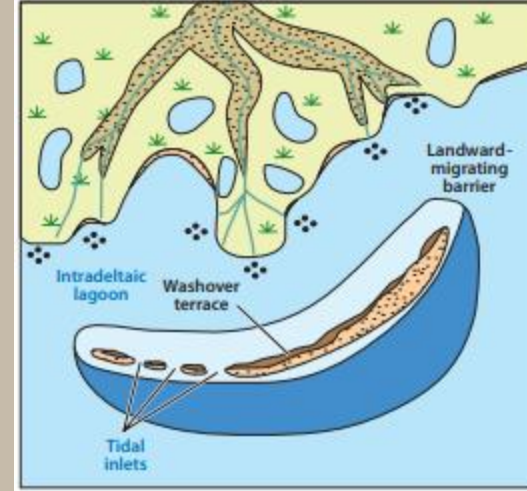
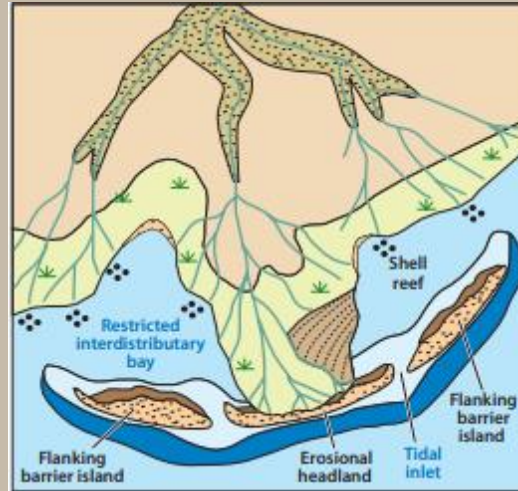
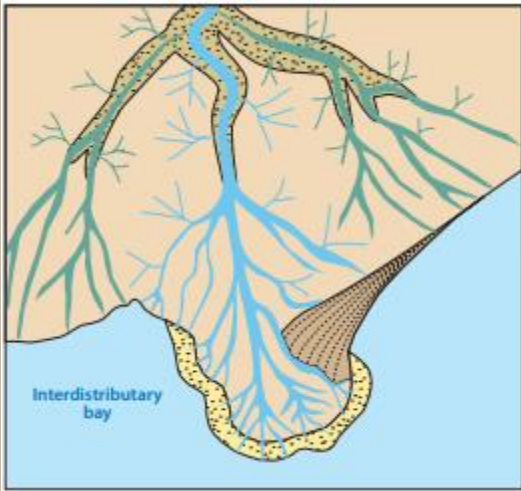
Barrier Island Development



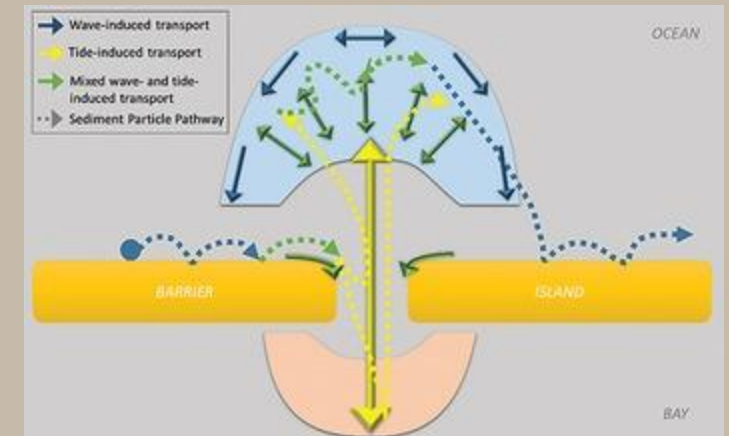
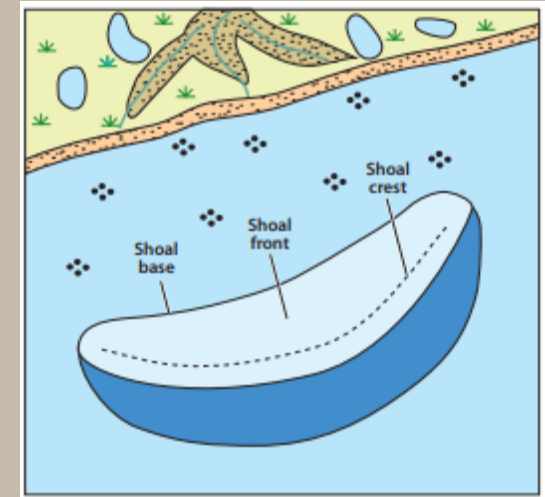
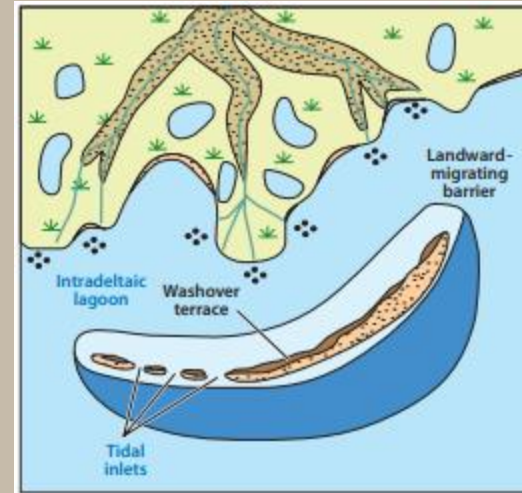
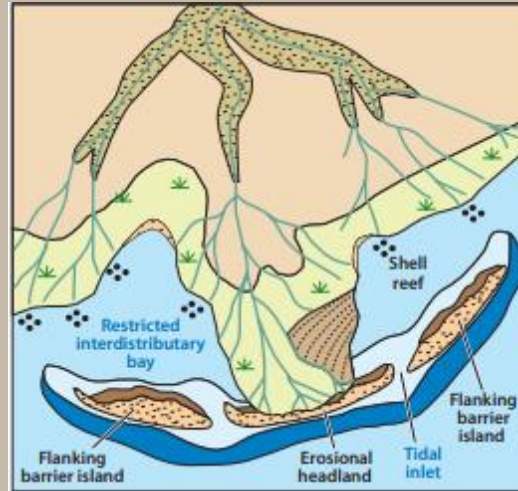
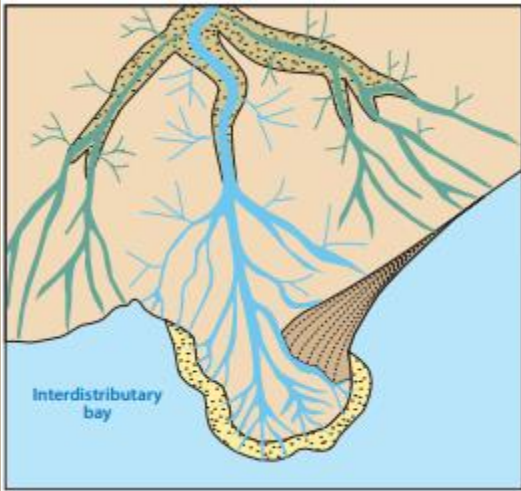
Barrier Island Development



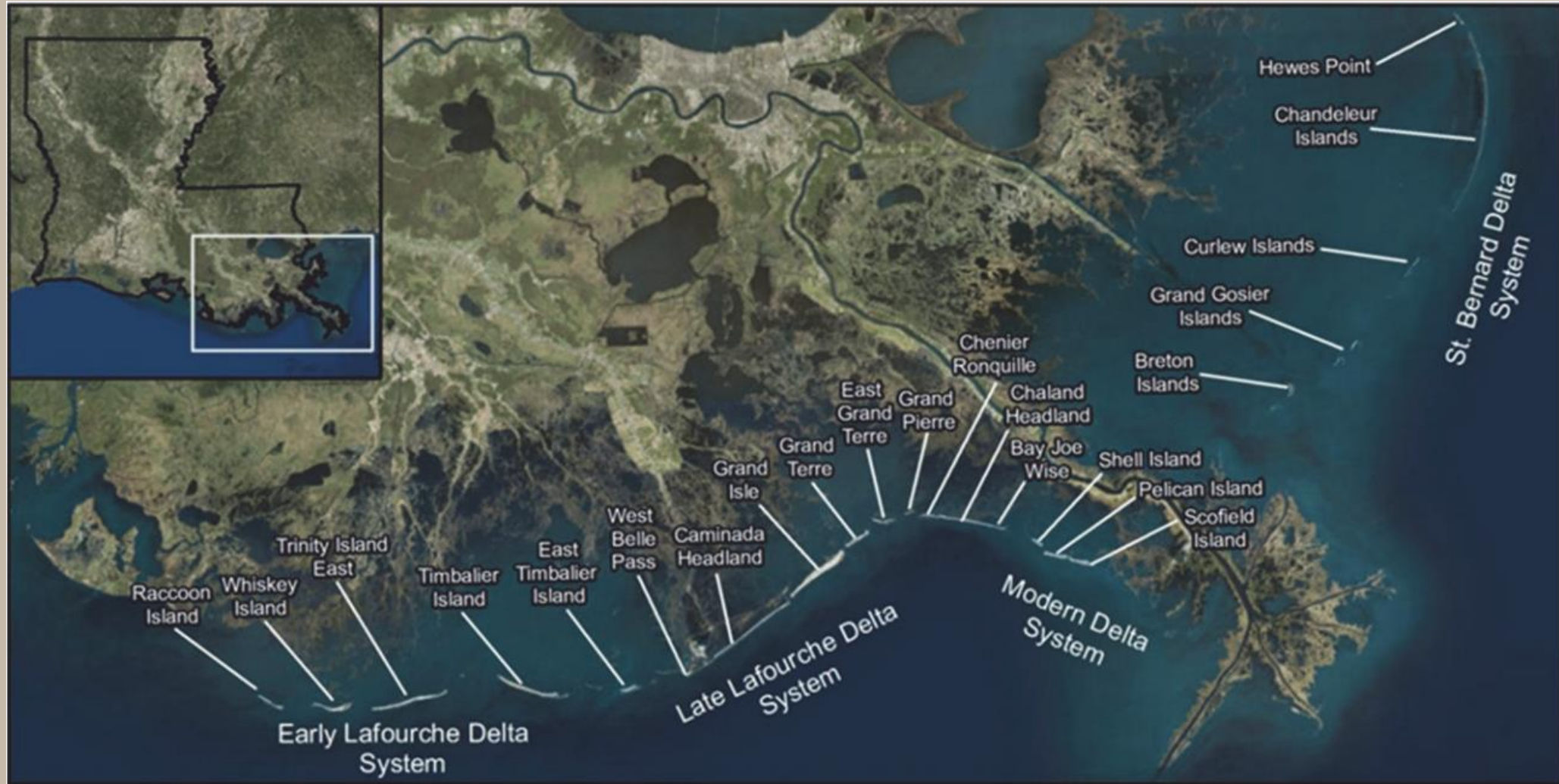
Barrier Island Development



Barrier Island System



System Wide Approach



BISM- Adaptive Management

Goal of BISM:

A holistic, system-wide approach to barrier island management that guides when and where to focus restoration resources (funding and sediment) to **maintain barrier island integrity** as defined in the Coastal Master Plan, while **minimizing overall system maintenance costs** and **reducing project implementation times**.

BISM- Adaptive Management

Goal of BISM:

A holistic, system-wide approach to barrier island management that guides when and where to focus restoration resources (funding and sediment) to **maintain barrier island integrity** as defined in the Coastal Master Plan, while **minimizing overall system maintenance costs** and **reducing project implementation times**.

Programmatic Objectives:

1. Mechanism to prioritize projects that provide the greatest value on a long-term, system-wide scale.
2. Reduce overall costs and delineate expected future costs to inform planning and budgeting.
3. Employ and advance Regional Sediment Management (RSM) practices to reduce overall sediment need and delineate expected future need.
4. Incorporate adaptive management into barrier island management.
5. Reduce implementation time for projects.

BISM- Adaptive Management

Goal of BISM:

A holistic, system-wide approach to barrier island management that guides when and where to focus restoration resources (funding and sediment) to **maintain barrier island integrity** as defined in the Coastal Master Plan, while **minimizing overall system maintenance costs** and **reducing project implementation times**.

Programmatic Objectives:

1. Mechanism to prioritize projects that provide the greatest value on a long-term, system-wide scale.
2. Reduce overall costs and delineate expected future costs to inform planning and budgeting.
3. Employ and advance Regional Sediment Management (RSM) practices to reduce overall sediment need and delineate expected future need.
4. Incorporate adaptive management into barrier island management.
5. Reduce implementation time for projects.

