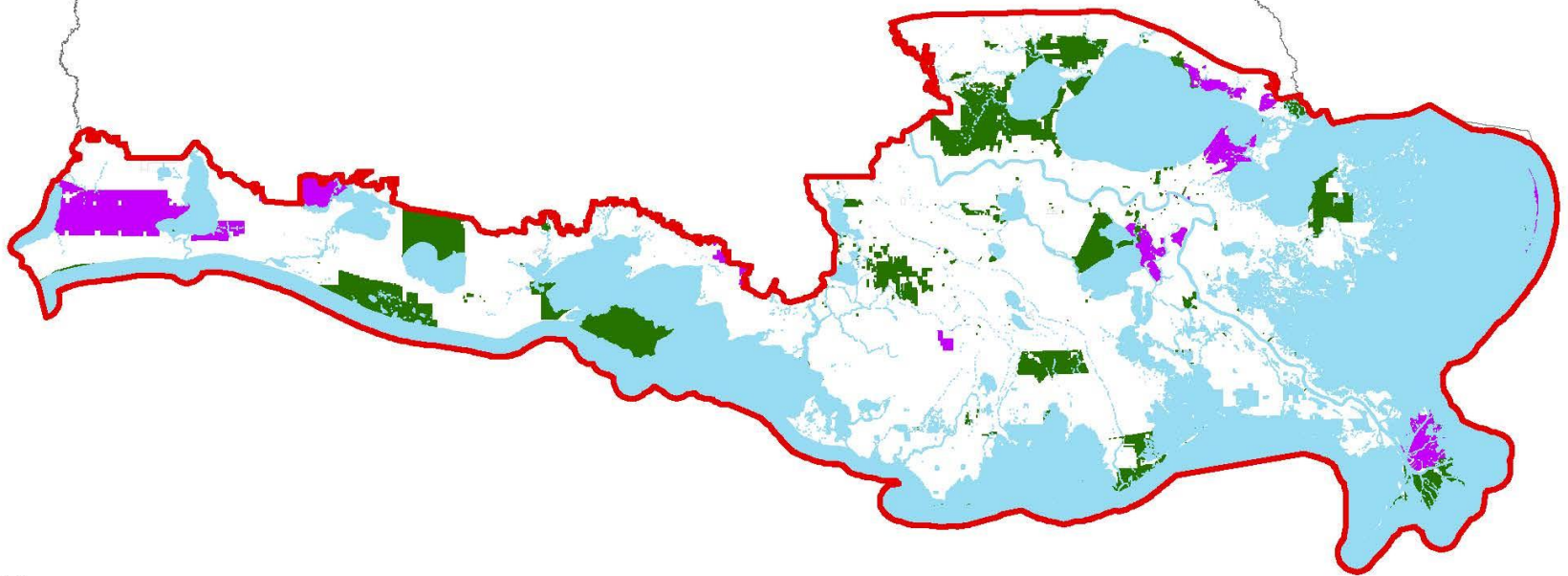


Louisiana Blue Carbon Nirvana

- Tidal Marsh Restoration
 - 540,000 acres
 - 60-year crediting period
 - Verra VCS registered
 - Projected to generate 125,000,000 carbon credits
 - \$50/credit
 - MRV cost averages \$30/credit
 - Gross = \$2.5 Billion over 60 years





NOTE:

The coastal basin boundary map represents the combined 8 coastal basins per the CPRA Coastal Information Management System (CIMS). The state land and water boundaries are from the Louisiana Office of State Lands GIS data layers dated April 23, 2025. The federal lands information is from the USA Federal Lands layer within the ESRI "ArcGIS Living Atlas of the World" downloaded on May 19, 2025.

Legend

- | | |
|---|---|
|  Louisiana Coastal Basin Areas (≈ 9,224 sq miles) |  Federal Lands (≈ 3%) |
|  State Claimed Waters (≈ 46%) |  Private Land (exclusive of open water; ≈ 83%) |
|  State Land Interests (≈ 6%) | |

