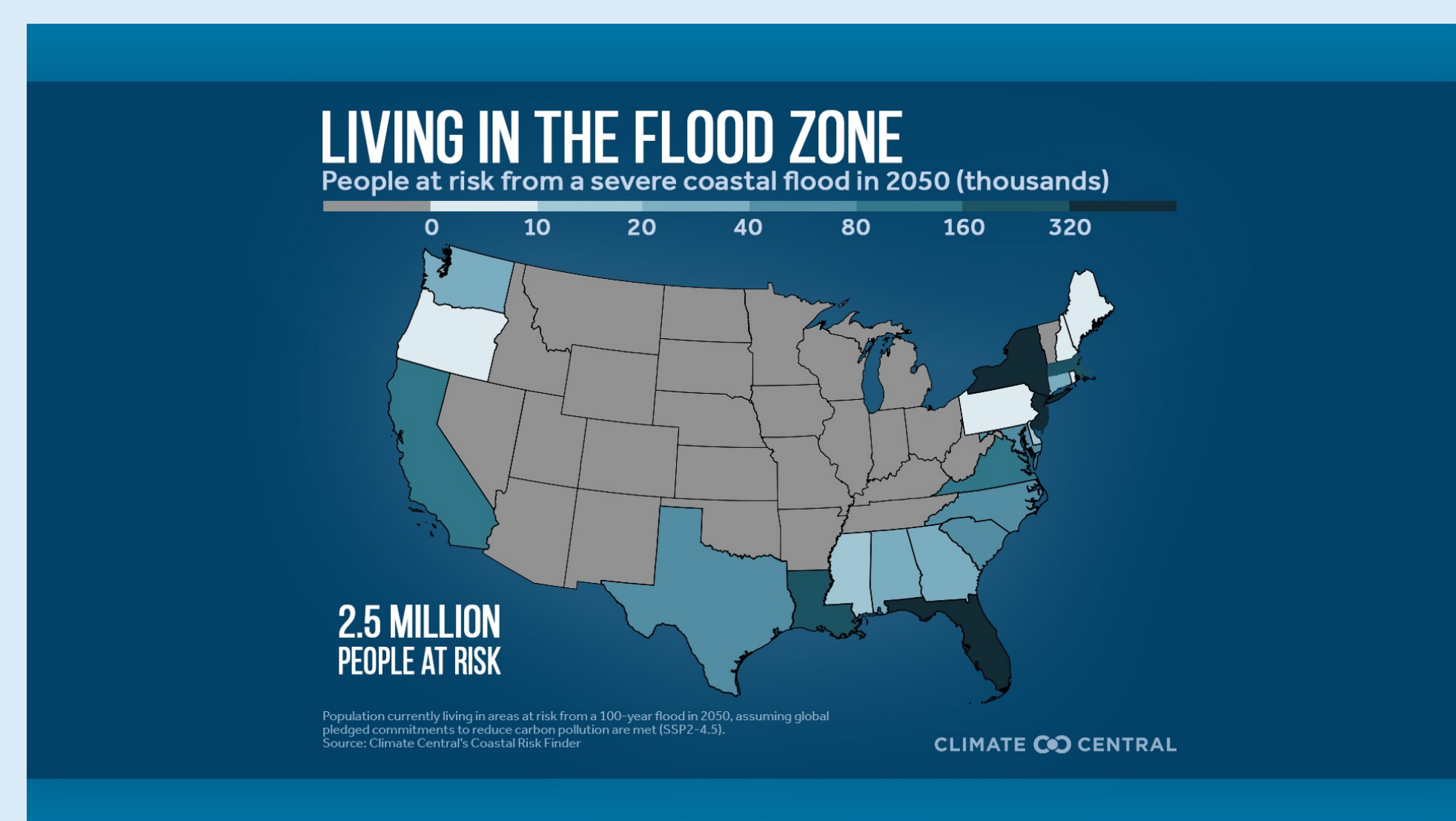


Using Coastal Risk Finder to assess the people and places in the contiguous U.S. at risk from a severe flood in 2050

Key Findings:

- Approximately 2.5 million Americans in 1.4 million homes live in areas at risk from a severe coastal flood in 2050, assuming pledged commitments to reduce global carbon pollution are met (SSP2-4.5).
- Florida, New York, and New Jersey have the highest numbers of people and homes in areas at risk.
- New York City has the most people currently living in areas at risk of a severe flood in 2050 — an estimated 271,000 people.
- Older adults are disproportionately exposed to coastal flood risk. Nearly 540,000 people aged 65 and older live in at-risk areas.



State	Population at risk	Homes at risk
Florida	505,000	355,000
New York	445,000	188,000
New Jersey	324,000	232,000
Louisiana	313,000	140,000
Massachusetts	174,000	90,000
Virginia	146,000	71,000
California	112,000	46,000
Texas	78,000	56,000
North Carolina	67,000	50,000
South Carolina	67,000	45,000

Data Sources & Methods



CLIMATE CENTRAL Coastal Risk Finder

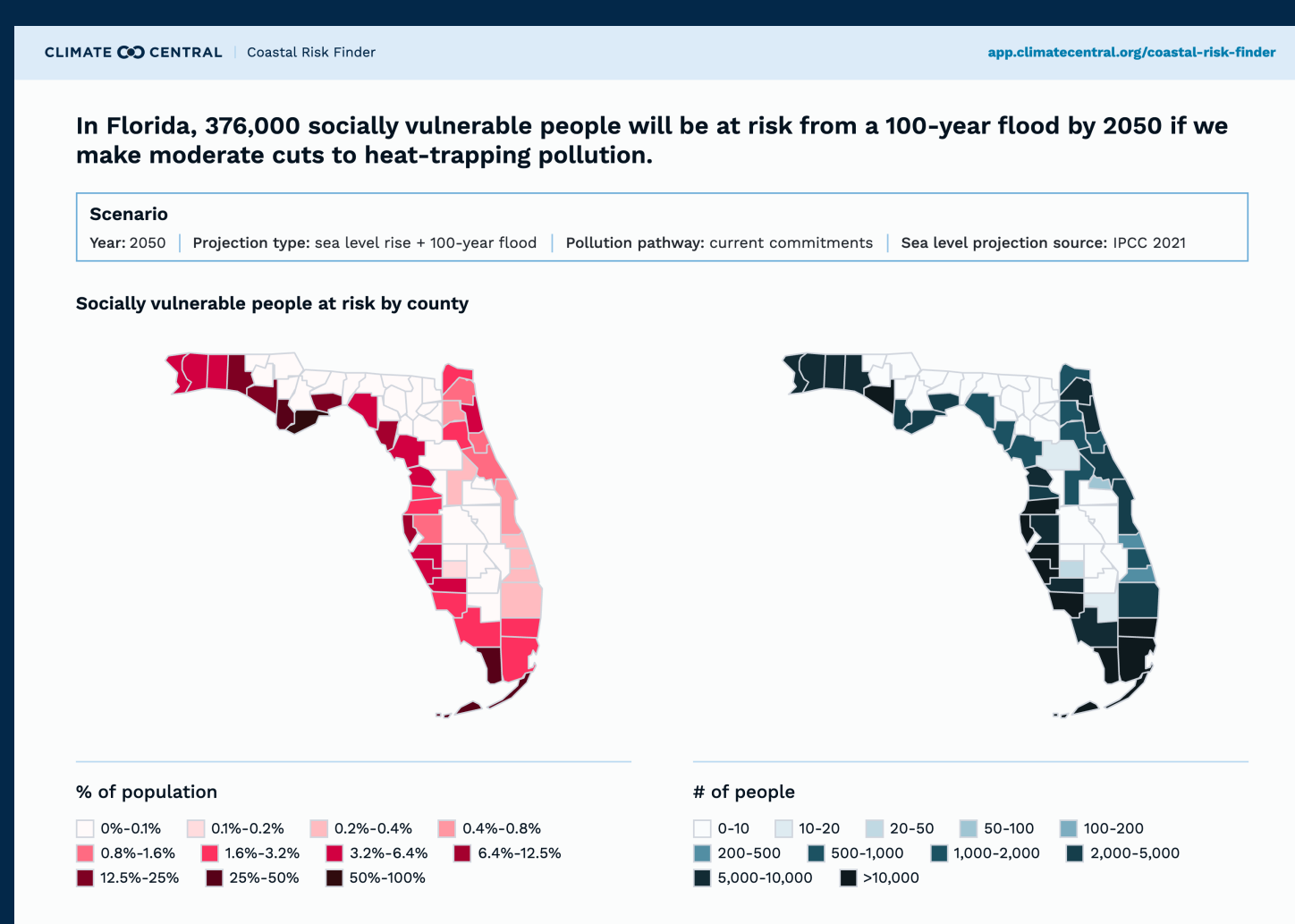
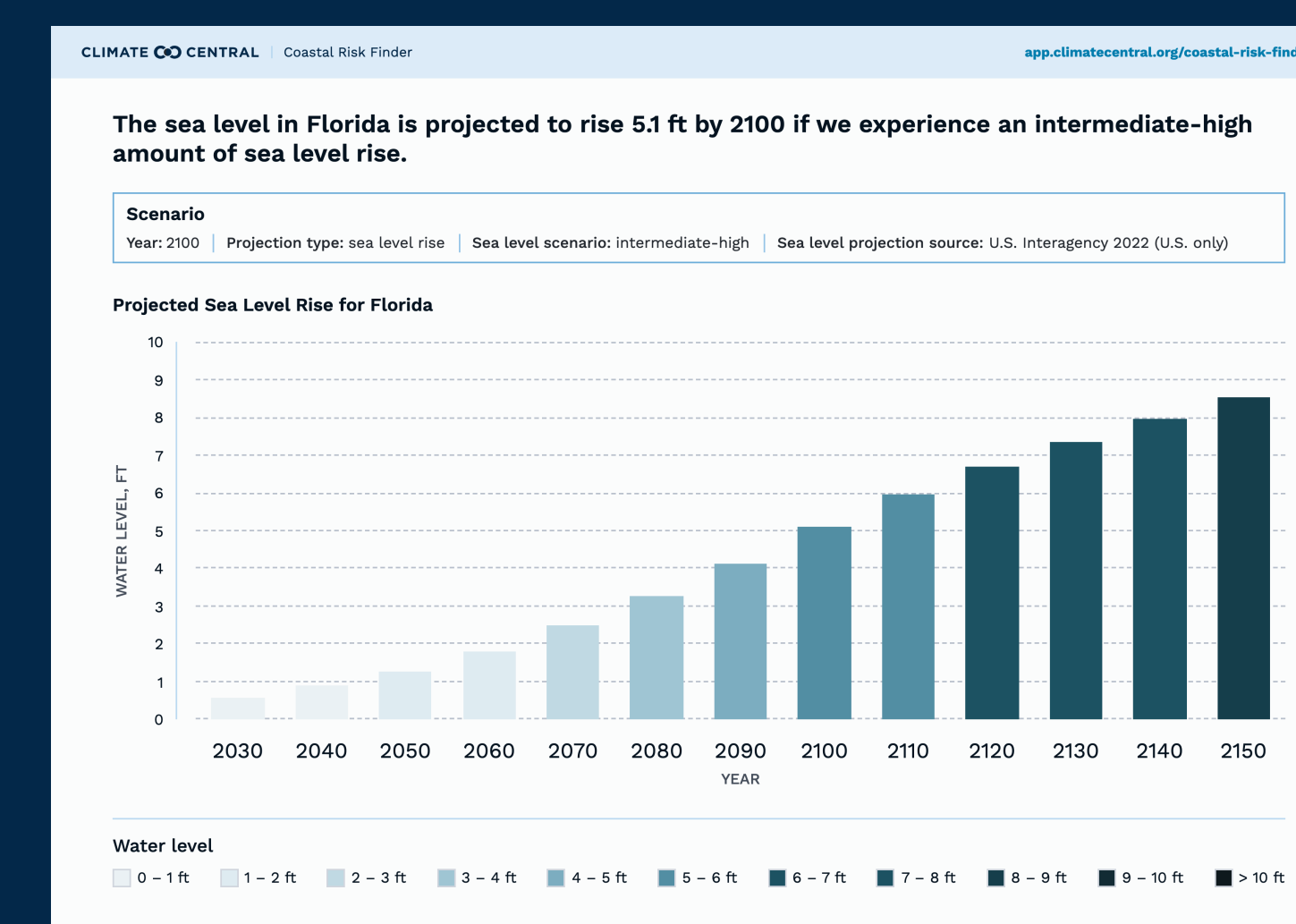
app.climatecentral.org/coastal-risk-finder

A free web tool for exploring sea level rise and coastal flood risks

Impacts

Solutions

Projections

- Impacts to populations, land, and homes
- For U.S. states, counties, municipalities, congressional districts, and state legislative districts
- Downloadable data and graphics

- Briefs on key adaptation work, organizations, and policies for each coastal state
- Guides on individual preparedness for worsening coastal floods

- User-selectable year, flood level, pollution scenario, and more
- Projections from the IPCC and U.S. Interagency Task force
- Downloadable graphics

Resources



Go to the tool!

User Guides



- Media Professionals
- Government Officials
- Community Leaders
- Researchers
- Educators
- Concerned Citizens



Report

Using Coastal Risk Finder to assess the people and places in the contiguous U.S. at risk from a severe flood in 2050



Webinar

Hear from experts in coastal resilience and community adaptation about field applications for Coastal Risk Finder and related tools

About Climate Central

Climate Central is an independent group of scientists and communicators who research and report the facts about our changing climate and how it affects people's lives. Climate Central is a policy-neutral 501(c)(3) nonprofit.